



Eastbourne Avenue
Stevenage | SG1 2EX

AGENT HYBRID

£325,000



Agent Hybrid is delighted to present this CHAIN FREE, well-maintained two-bedroom end-of-terrace home, situated at the end of a quiet cul-de-sac in the sought-after area of Symonds Green. The accommodation includes an entrance lobby with an inner door leading to the hallway. From here, open-plan access flows into a modern kitchen, featuring sleek white gloss units, and a spacious lounge/diner with French doors opening to the rear garden. The first-floor landing leads to two generously sized bedrooms and a contemporary bathroom. Outside, the property boasts a private rear garden and a garage en-bloc conveniently located to the side. Parking within the road operates on a first-come, first-served basis. Early viewing is highly recommended!

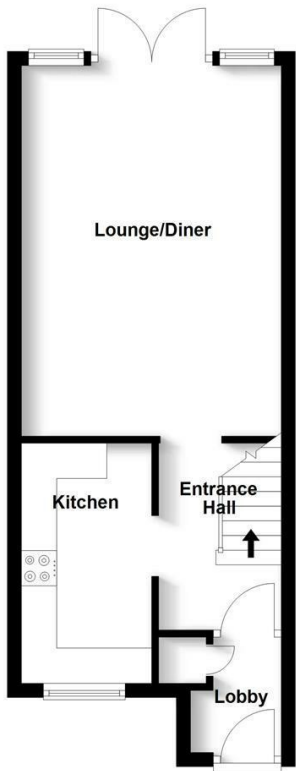
DIMENSIONS

- Lobby
- Entrance Hallway 8'8 x 5'7
- Kitchen 11'3 x 6'1
- Lounge/Diner 17'3 x 11'9
- Bedroom 1: 11'9 x 10'9
- Bedroom 2: 11'9 x 10'4
- Bathroom 6'8 x 6'0

Energy Efficiency Rating		
	Current	Potential
Very energy efficient - lower running costs		
(92 plus) A		86
(81-91) B		
(69-80) C		
(55-68) D	57	

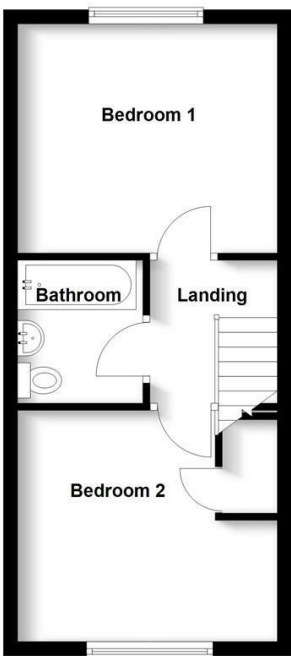
Ground Floor

Approx. 33.5 sq. metres (360.7 sq. feet)



First Floor

Approx. 32.2 sq. metres (347.1 sq. feet)



Total area: approx. 65.8 sq. metres (707.8 sq. feet)

IMPORTANT: We would like to inform prospective purchasers that these sales particulars have been prepared as a general guide only. A details survey has not been carried out, not the service, appliances and fittings tested. Some sizes should not be relied upon for furnishing purposes and are approximate. If floor plans are included, they are for guidance and illustration purposes only and may not be to scale. If there are any important matters likely to affect your decision to buy, please contact us before viewing the property.

Agent Hybrid
 57 High Street, Stevenage, Hertfordshire, SG1 3AQ
 Tel: 01438 870673 - enquiries@agenthybrid.co.uk
www.agenthybrid.co.uk

AGENT HYBRID