



Haycock Round
Stevenage | SG1 6GS

AGENT HYBRID

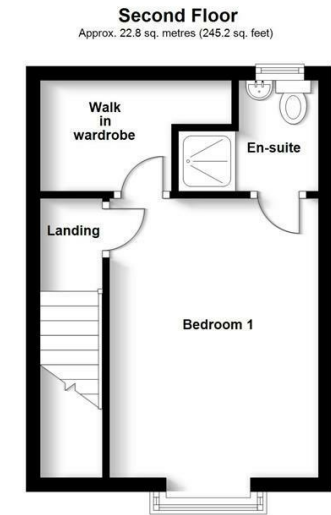
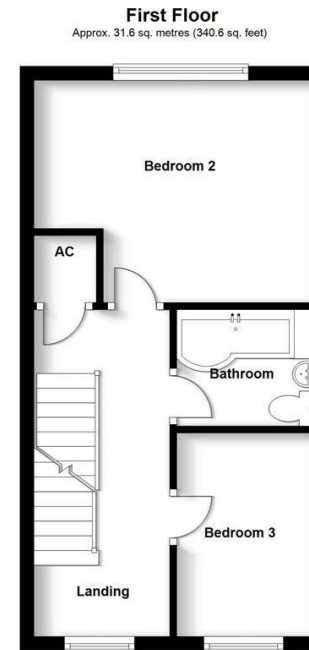
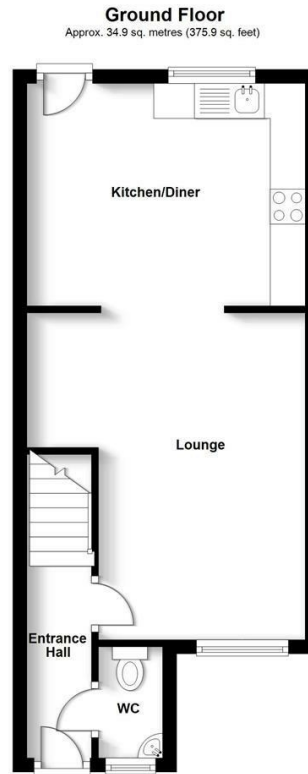
Offers Over £355,000



Agent hybrid welcomes to the market a Three Bedroom, Three Storey Mid Terraced Home, located in the Great Ashby area of Stevenage. Built by Croudace Homes to their Robina style, accommodation briefly comprises of: An Entrance Hallway, with doors leading to a Downstairs WC and a good sized Lounge. An opening (doors removed) leads to a Modern Kitchen/Diner. Stairs rise to the first floor landing where you will find the Family Bathroom and two good sized bedrooms. Further stairs rise to the top floor where you will find the Master Bedroom, complete with En-Suite and a Walk in Wardrobe. Externally, the property benefits from a Low Maintenance Rear Garden with artificial lawn, a Garage to the rear, with Parking space in front of it.

DIMENSIONS

- Entrance Hallway
- Downstairs WC
- Lounge 15'0 x 12'7
- Kitchen/Diner 12'7 x 9'0
- Bedroom 2: 12'7 x 9'0
- Bedroom 3: 9'3 x 6'2
- Family Bathroom
- Bedroom 1: 11'0 x 9'4
- En-Suite



Total area: approx. 89.3 sq. metres (961.7 sq. feet)

IMPORTANT: We would like to inform prospective purchasers that these sales particulars have been prepared as a general guide only. A details survey has not been carried out, not the service, appliances and fittings tested. Some sizes should not be relied upon for furnishing purposes and are approximate. If floor plans are included, they are for guidance and illustration purposes only and may not be to scale. If there are any important matters likely to affect your decision to buy, please contact us before viewing the property.

Energy Efficiency Rating		
	Current	Potential
Very energy efficient - lower running costs		
(92 plus) A		
(81-91) B		
(69-80) C		
(55-68) D		

Agent Hybrid
57 High Street, Stevenage, Hertfordshire, SG1 3AQ
Tel: 01438 870673 - enquiries@agenthybrid.co.uk
www.agenthybrid.co.uk

AGENT HYBRID