



Sherratt House



Welcome Home

Nestled in the picturesque village of Lower Leigh, Sherratt House is a unique home with an intriguing history that dates back to its former days as a village inn.

This five-bedroom home offers an aspirational and modern lifestyle, harmoniously blending the tranquillity of idyllic rural living with access to modern conveniences. Moments away, the vibrant town of Uttoxeter boasts esteemed schools, diverse shops and an array of restaurants. Cheadle, Stone, Stafford and the A50 are also easily accessed from here.



Stunning Walking Trails



Surrounding the whitewashed property is a network of stunning walking trails that meander through the Staffordshire countryside. While presenting you with a peaceful environment and an escape from the outside world, the setting also provides useful transport links with the M6, convenient train stations and international airports within easy reach. This is more than just a home; it's an inspired opportunity to live where tranquillity and possibility converge.

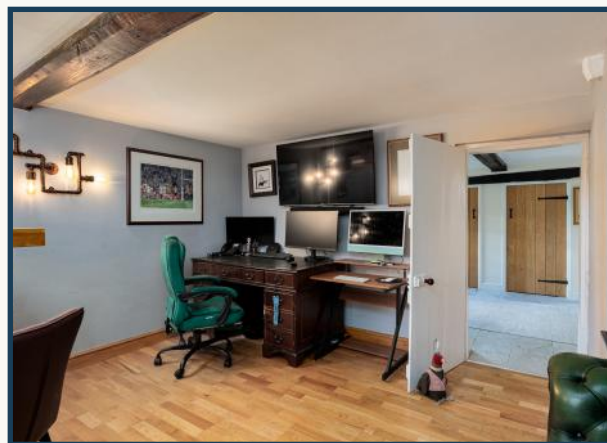
As you approach the property from the leafy Manor Lane, you're immediately swept into a sense of calm. Pull onto the paved driveway via the electric gates, where there's space for several vehicles, and a detached double garage housing a further two cars.





Walk through to the snug, a cosy space with exposed ceiling beam, rustic bar and office area. It's easy to imagine flopping into a comfy armchair after a long day and sipping on your favourite drink as the evening light streams through the window from the front garden.

Make your way to the front door along the side elevation and step inside to discover the welcoming reception hall. On your left a solid oak door leads to the lounge and on your right is the snug.



Country Cottage Charm

Cross the hallway and enter the lounge. Chunky wooden beams, mullion window and a brick fireplace that houses a wood burner really add to the country cottage charm of Sherratt House. This is a place for uninterrupted family time, where you can hunker down in the winter months in front of a crackling fire.

In the summer, open the French doors and wander outside, where there's an air of a quintessential English country garden. From the paved patio area, a pathway curves around the well-kept lawn, shaded by mature trees and flanked by colourful borders. This truly is a private outdoor sanctuary where you can unwind to the sounds of nature.

Return through the lounge and walk through to the sitting room, the perfect hideaway for children wanting their own space or a games room.



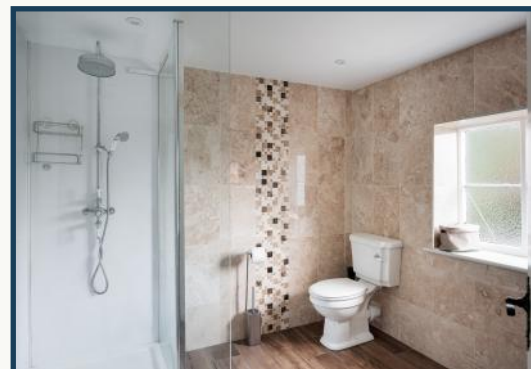


Original 16th Century Beams

Retrace your steps to the reception hall and take a left into the kitchen dining area. Resembling the cover of a country house magazine, this is the beating heart of the home, where the former inn's original 16th-century beams mingle with elegant country design. The current owners' passion and attention to detail is evident throughout, from the underfloor heating and charming window seat to the central island with its solid oak worktop.

Triple aspect windows draw light from every angle, reflecting on the wall units and tiled flooring to fill each area with natural light. As well as featuring a seamlessly integrated Rangemaster cooker and hob, there's plenty of space for a large dining table, ideal for entertaining friends or enjoying large family dinners. There's also a convenient WC for freshening up after a day spent pottering in the garden.





Tranquil Escape

Head upstairs to discover four sizeable bedrooms leading off from the first-floor landing. Straight ahead is the master bedroom, a showstopping space complete with an ensuite shower room and a large dressing room that sits inside the eaves of the property.

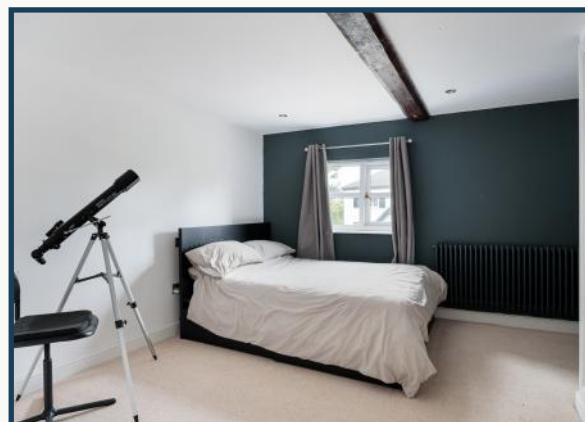
At the opposite end of the landing is an impressive family bathroom with a walk-in shower cubicle and a freestanding oval bath, creating the ultimate pamper space.

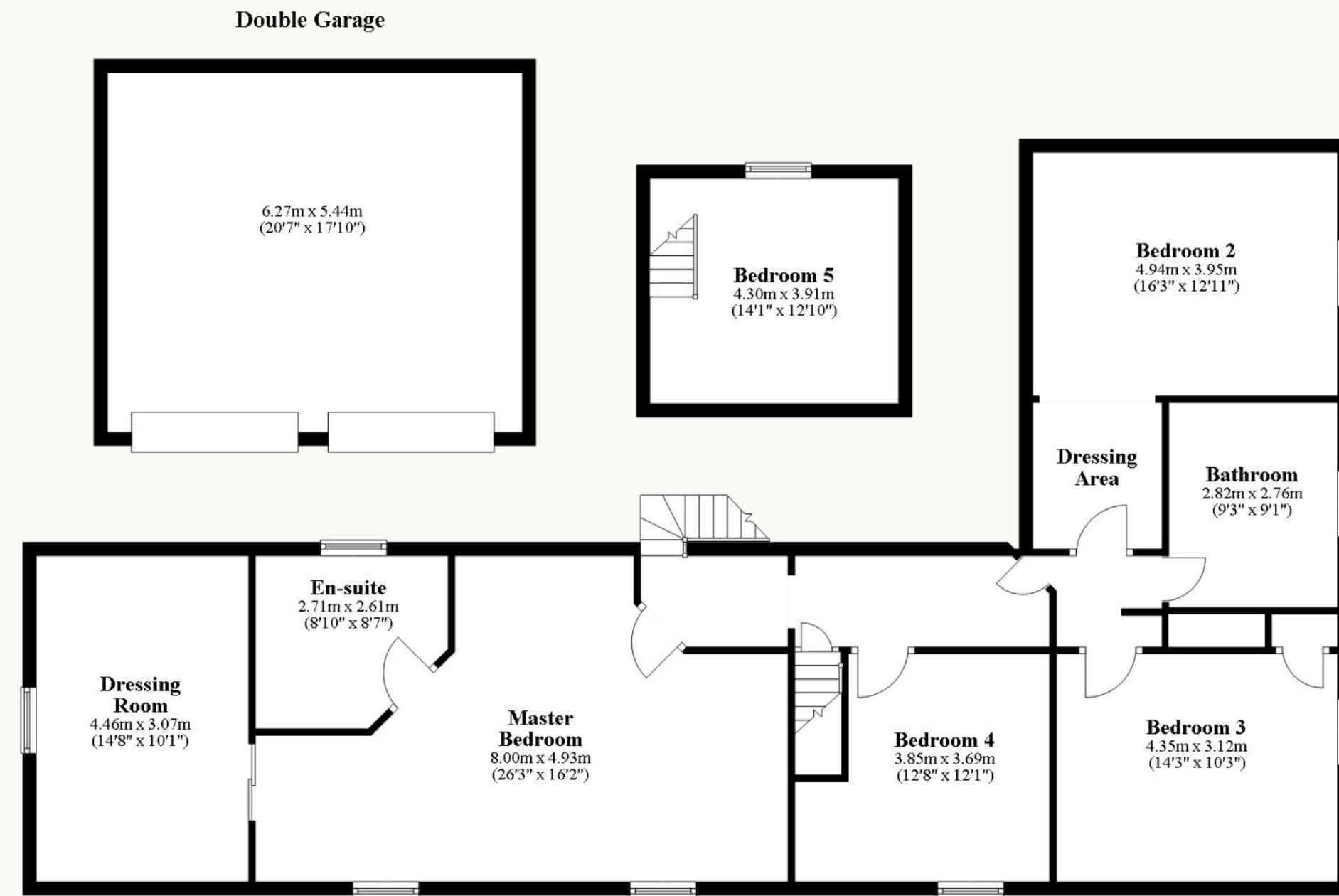
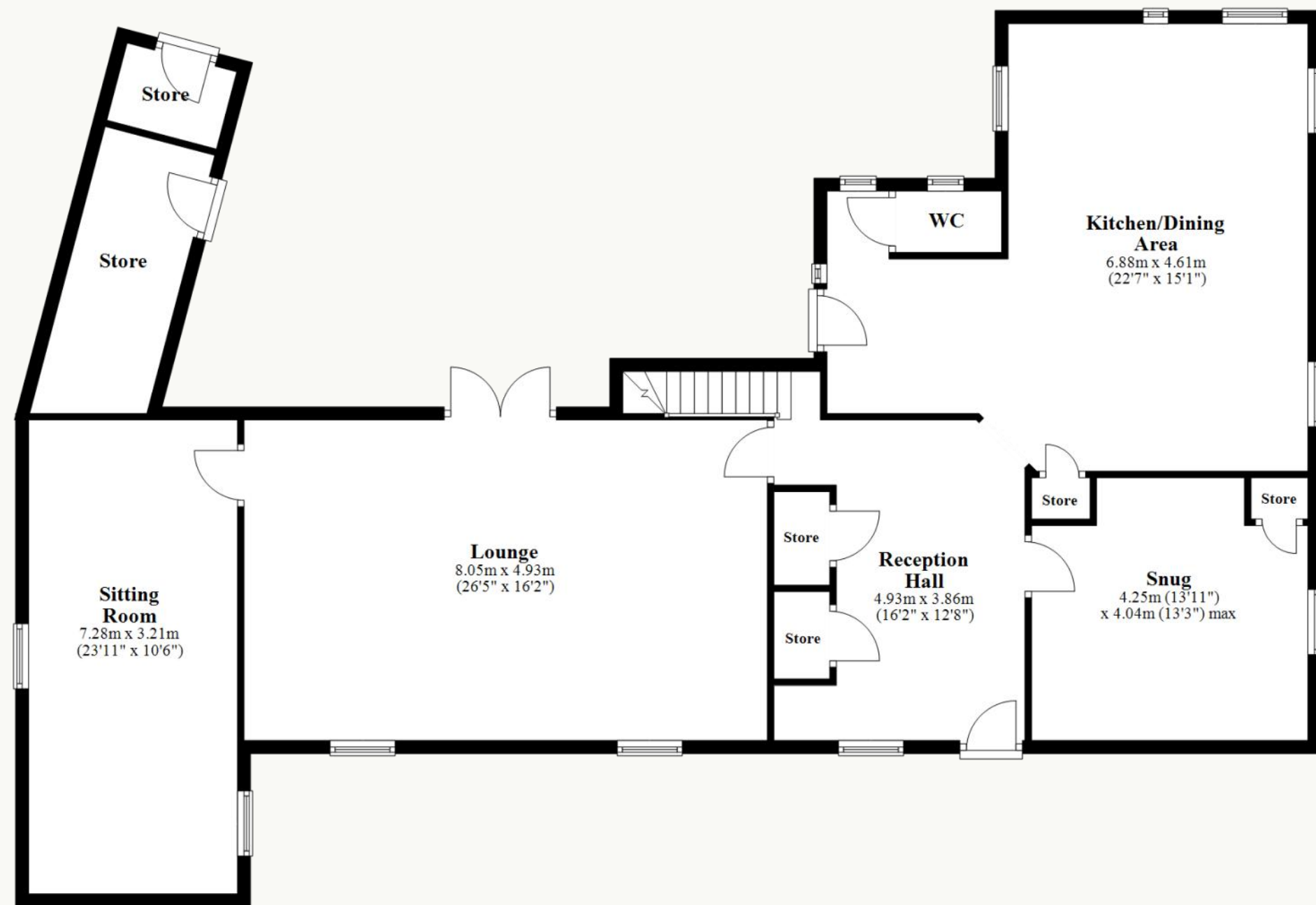




Either side of the family bathroom are bedrooms two and three, both looking over the village green. Bedroom four is the slightly smaller of the rooms but still possesses as much charm with its exposed ceiling beam and pretty picture window, easily accommodating a double bed.

Follow the staircase up to bedroom five on the second floor. The sloping ceiling, wooden beams and quaint cottage window create a restful space filled with character where you can enjoy a peaceful night's sleep.







Contact Adam for more information

01538 493333

sales@addisonmead.co.uk

Addison Mead
— EXCLUSIVE —