



FOXT VIEW  
IPSTONES





## Welcome Home

Hugged on all sides by the quintessentially English countryside of the Staffordshire Moorlands, Foxt View is a modern, five-bedroom home that lies on an exclusive plot, boasting all the charms of a rural retreat. From the doorstep, enjoy country walks with panoramic views and visit the local pubs and shops in the semi-rural village of Ipstones.

Approach the property along a quiet lane and pull onto the gravelled driveway, fringed by mature trees and shrubs and a stone wall. There is ample space for several cars, and a detached double garage, with power, EV charging point and electric door, providing parking for additional vehicles. The mottled red brick façade of the property seamlessly blends into its bucolic setting and immediately gives you the sense that you've escaped to the countryside.



*"A modern family home with all the hallmarks of a rural retreat, nestled in the pretty village of Ipstones"*

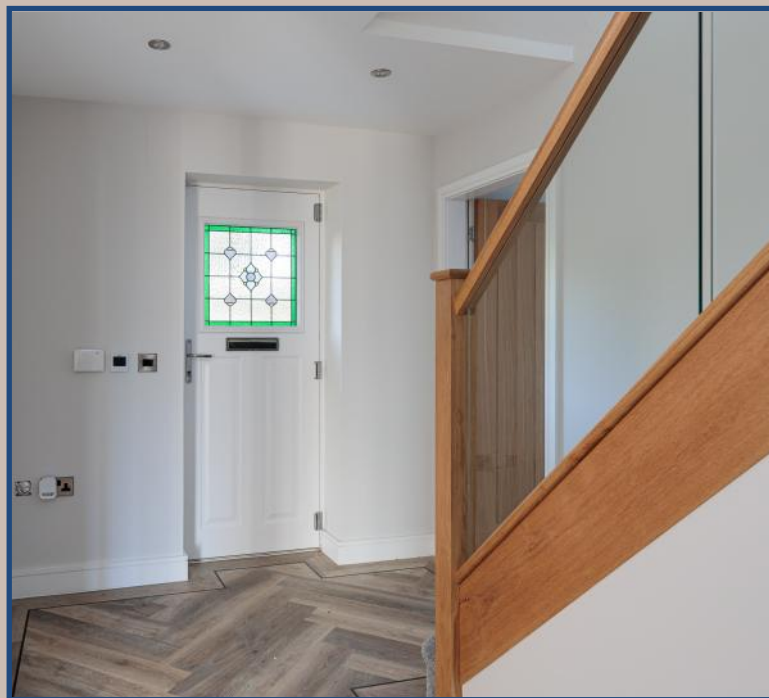






## Outstanding Craftmanship

As you step through the oak porch and into the entrance hall, you're met with a striking herringbone Karndean floor and a glass and oak balustrade staircase. This really sets the standard for the finer details and outstanding craftsmanship that elevate Foxt View to another level. Set across three storeys, every inch of the property has been lovingly designed to incorporate high-end features that are in-keeping with its natural surroundings. You'll also find a ground-floor cloakroom/WC Off the hallway.



As you explore the ground floor, feel the gentle warmth that radiates from the underfloor heating. To your right, the Karndean flooring flows into the lengthy living room. At the front elevation, a beautiful bay window draws natural light into the space, and a multi-fuel stove, set inside a red brick fireplace with a slate hearth and a rustic oak mantle, steals your gaze. This is the perfect family room, designed for unwinding and sharing precious moments together.





## Breathtaking Views



Walk towards the rear elevation where bi-folding doors invite you to wander out into the garden. Step onto the Indian stone patio and soak in the breathtaking views that lie beyond the lawn and the characterful dry-stone wall.







## Views To Dine For

Return indoors via the bi-folding doors, which lead into the kitchen and dining room, framing the magnificent view. This multi-functional room is the beating heart of the home, and no stone has been left unturned when it comes to design. Offset by the Karndean floor, shaker-style units topped with quartz work surfaces showcase the impressive attention to detail. Imagine a large Belfast sink with brass mixer tap, AEG oven, combi microwave oven and integrated dishwasher, dryer, fridge and freezer – everything you could dream of for your family kitchen.

Continue through to the utility room, complete with another Belfast sink, integrated washing machine and dryer and Karndean flooring.

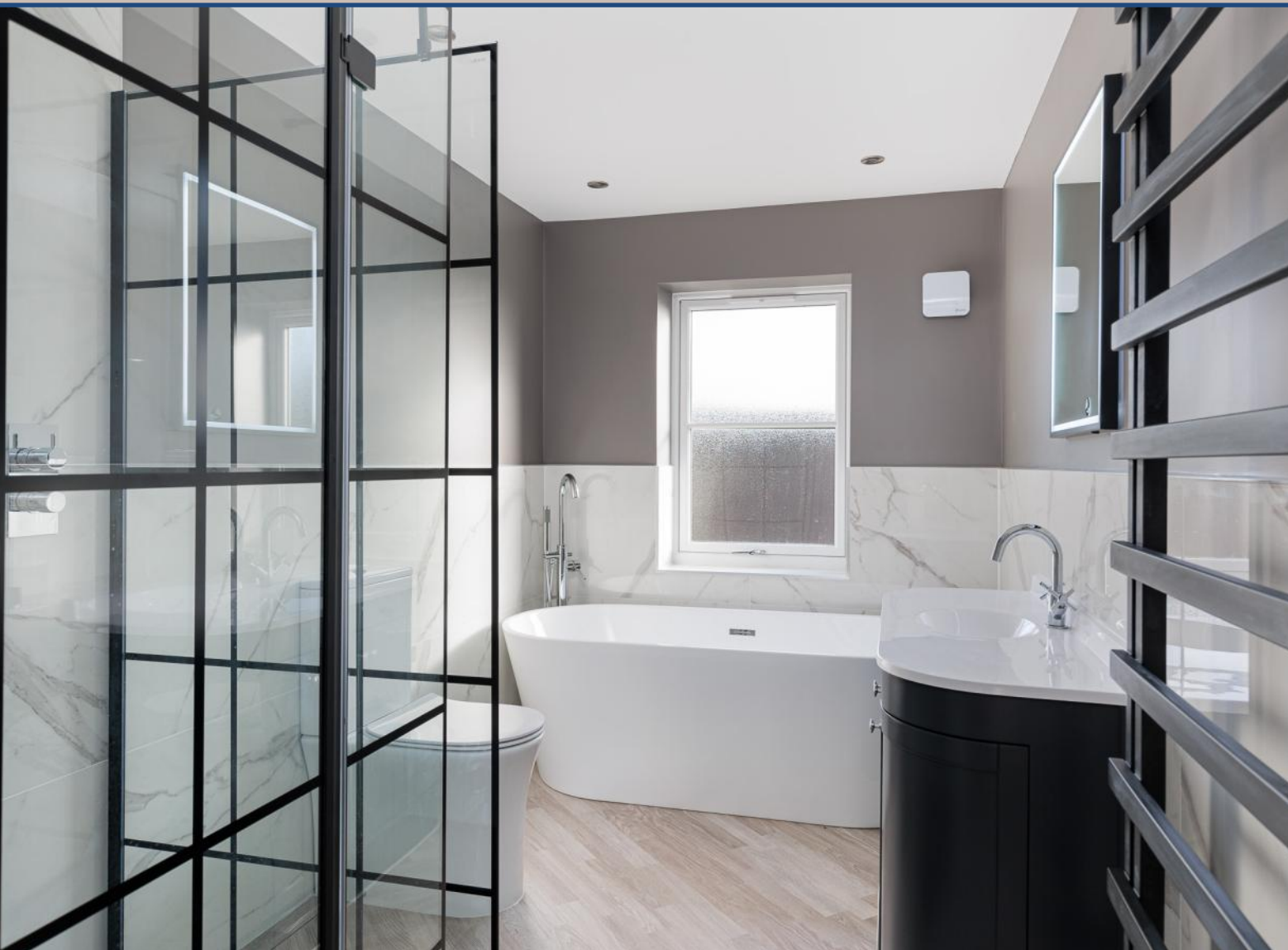
Retrace your steps back through the kitchen and into the hallway to enter the sitting room. Featuring a bay window at the front elevation, this cosy space can also be used as a study, ideal for anyone who works from home.



Over  
300 sq.m  
of pure luxury







From the hallway, head upstairs to the first floor which opens up to four bedrooms and a family bathroom. The bathroom is showstopping with its freestanding bath, marble-style tiling, double walk-in shower and vanity wash basin. And bedroom two also vies for your attention with an ensuite shower room and a Juliet balcony that looks onto the idyllic countryside.





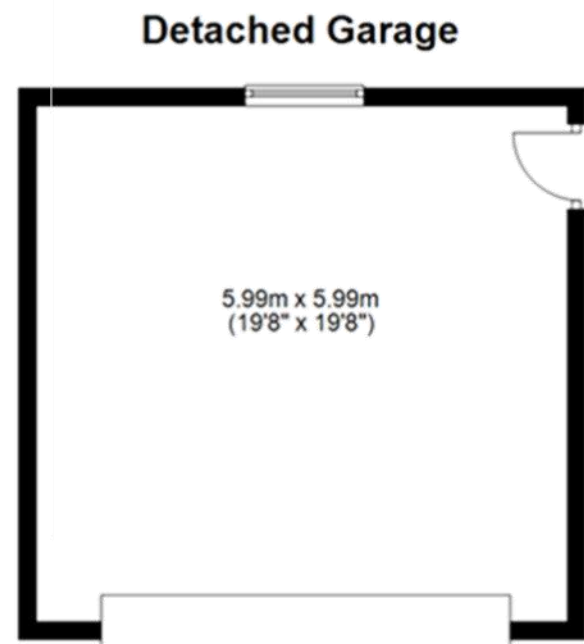
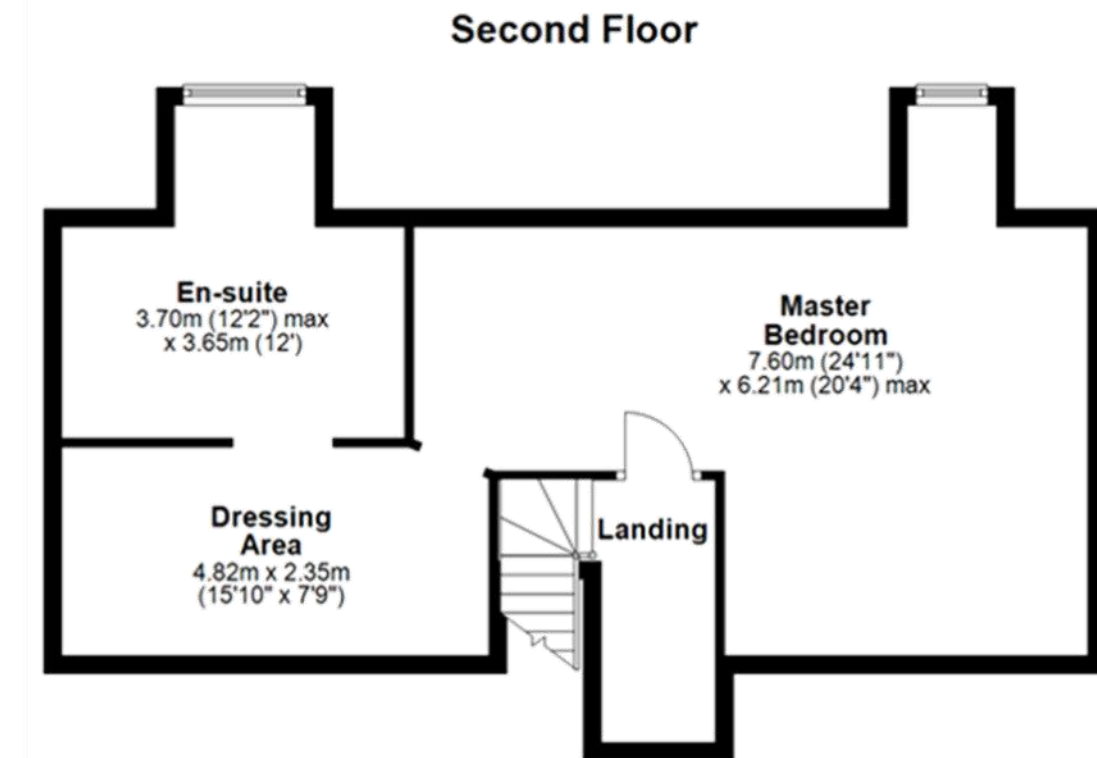
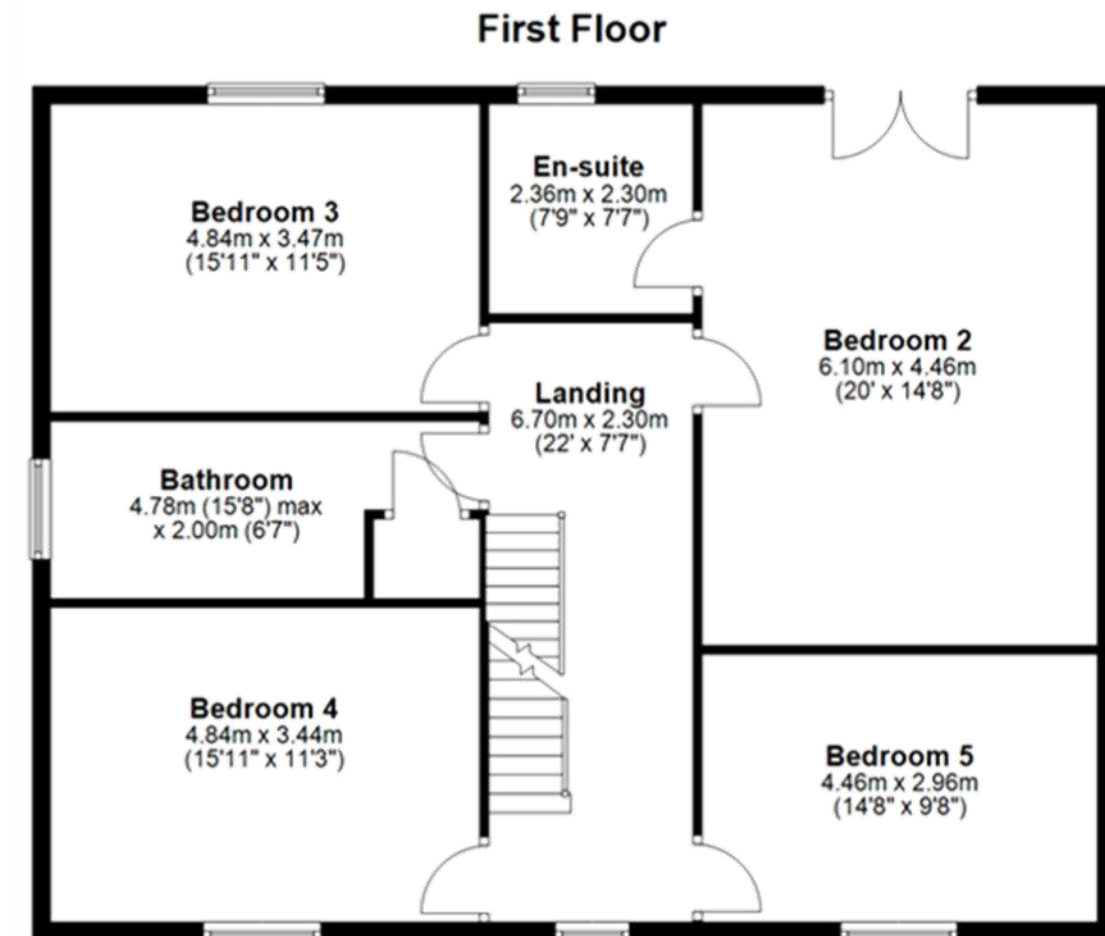
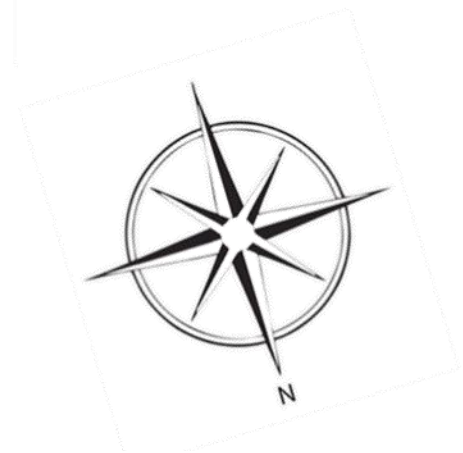
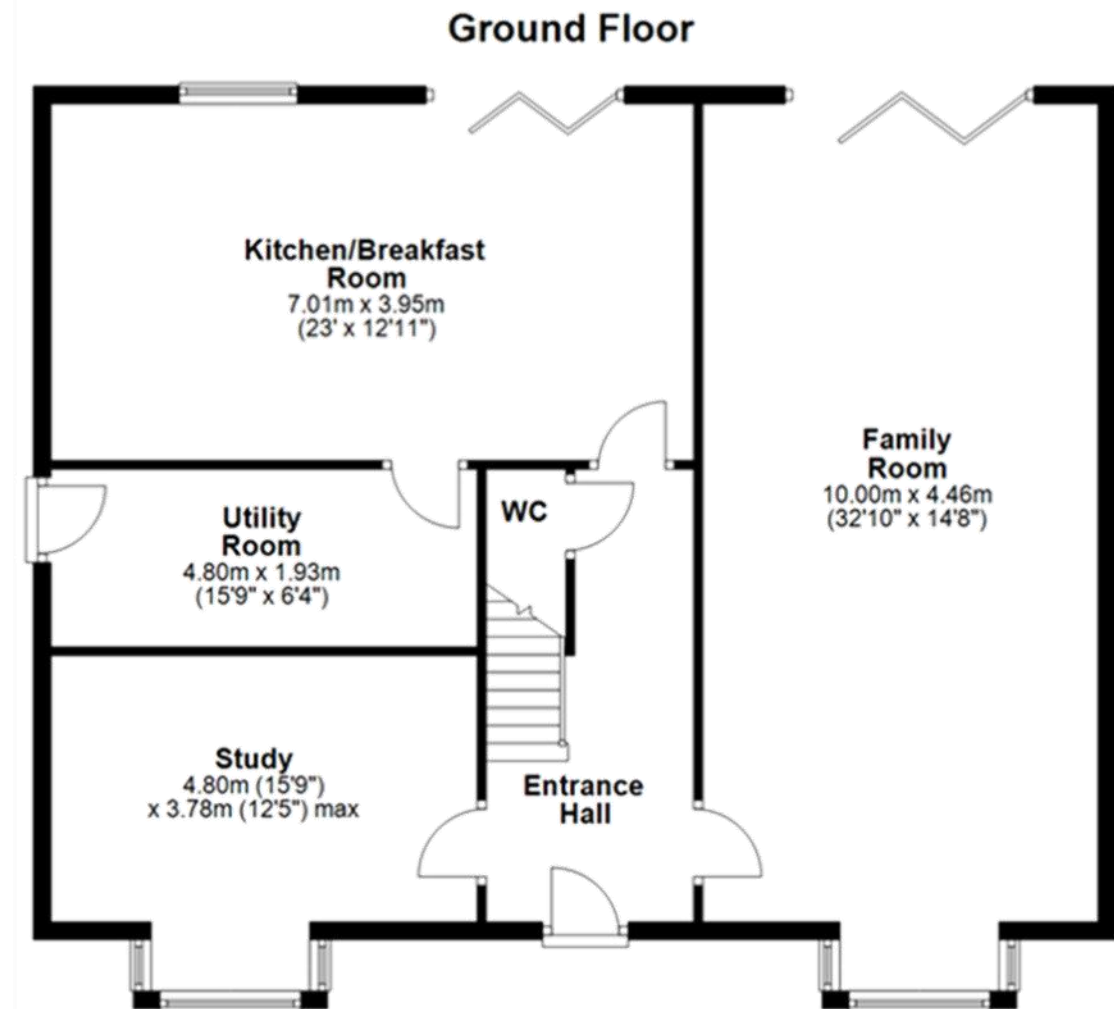


## *The Ultimate Escape for Relaxation*

Head back onto the landing and make your way upstairs to the second floor where the greatest surprise of all awaits. Dedicated to the Master Suite, this floor will take your breath away. Greeted by plush carpets that instantly give you that sense of luxury, the Master Bedroom is an impressive space which captures scenic views of the village of Foxt and beyond. Add to this a walk-in dressing room and a luxurious ensuite bathroom with freestanding bath, double shower cubicle and a quartz topped basin, and you have the ultimate escape for relaxation.











FOXT VIEW  
IPSTONES



Contact Adam for more information

01538 493333

[sales@addisonmead.co.uk](mailto:sales@addisonmead.co.uk)

Addison Mead  
— EXCLUSIVE —