



Cinder
COTTAGE



Cinder COTTAGE

“A charming cottage nestled along a sleepy, tree-lined lane just moments from the old mining village of Bignall End.”

Tucked away along a leafy lane in the rural village of Bignall End, Cinder Cottage is a characterful cottage packed to the rafters with period-style features. Imagine enchanting gardens with little nooks and crannies and a large inglenook fireplace rubbing shoulders with contemporary interior design. This four-bedroom detached property makes the perfect home for the modern family.

A Magical Setting

Approach the cottage from the stone chipped lane, which is hugged by tall, mature trees and hedgerows, until you reach the double wooden garage doors. Here you'll find ample off-road parking for several vehicles.

As you step through the heavy oak doorway into the entrance hall, you're whisked into a tranquil world and greeted with a winding staircase and ceramic tiled floor. On your left, another oak door leads you into a beautiful, spacious lounge. Immediately your eyes are drawn towards the large inglenook style fireplace with rustic oak mantle and log effect gas fire. Snuggle up in the evenings on the sofa and watch the flames flicker as you sip on a hot drink.





Walk towards the rear of the room and turn left into the games room, which currently houses a pool table, three pendant downlights and oak-effect flooring. Leading off to the left-hand side of the games room are a study, utility room and store area, also accessed externally via the double garage doors.

On your right, return through the lounge and walk into the dining room, a good-sized space with plenty of room for a six-seater dining table. The room is filled with natural light from the double-glazed doors that lead onto a rear patio.

Country Style Living

Return to the entrance hall to access the kitchen and breakfast room. This impressive space is without a doubt the beating heart of the cottage and a huge inglenook fireplace with cast iron multi-fuel burner steals the show. Along with cream, country cottage style base and wall units, there's enough space for an American fridge/freezer and a freestanding range cooker. Making the area even more functional are a WC, pantry and a utility room with further storage units, sink and plumbing for a washer and dryer.

Flooding the kitchen with light are sliding glass doors that open up into the garden room. This additional space lets you soak in the natural outdoor light and pretty, garden views and during the warmer months, you can open the patio doors and let the fresh air waft inside. Whether you enjoy a morning coffee and listening to the dawn chorus or prefer to unwind in the evening and watch the sky turn deep pink, this is the perfect spot for relaxation and contemplation.





Enchanting Gardens

Step outside and into the garden which wraps around the sides of the property. If you're an outdoors lover, you'll love exploring all the magical little corners that are filled with railway sleepers, log stores, mature hedges and meandering pathways that lead to cosy seating spots. There are plenty of areas for growing your own vegetables and keeping those green fingers busy.



Showstopping Bathroom

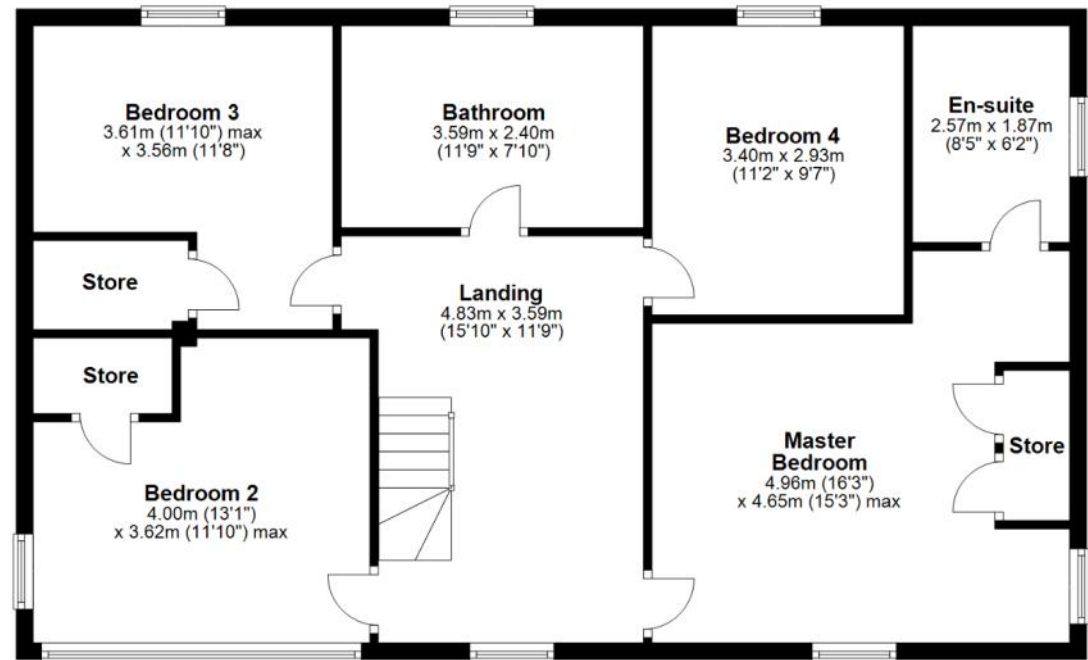
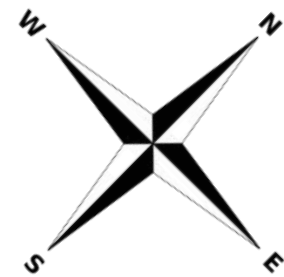
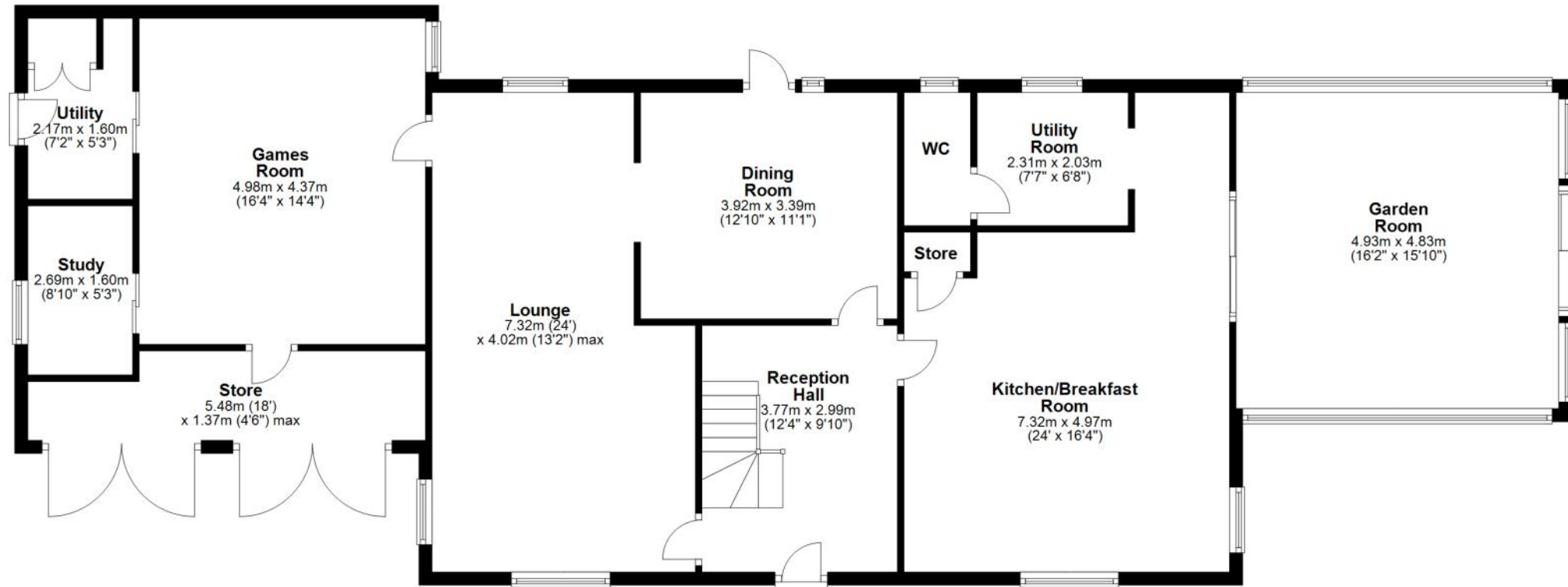
Retrace your steps back to the entrance hall and follow the staircase up to the first floor where four bedrooms and a family bathroom lead off from the balconied landing. Straight ahead you'll find a showstopping bathroom with exposed oak beams, walk-in shower and an oak step up to a freestanding rolltop bath with Victorian style mixer tap.





Bedrooms three and four lie to the rear of the property while the master bedroom and bedroom two face the leafy lane to the front elevation. The master bedroom features built-in wardrobes as well as an ensuite shower room.





Cinder
COTTAGE



Contact Adam for more information

01538 493333

sales@addisonmead.co.uk

Addison Mead
— EXCLUSIVE —