



MERELEIGH
LODGE ROAD



WELCOME

Lying on the fringes of the Cheshire market town of Alsager, Lodge Road has earned itself somewhat of a prestigious reputation owing to its picturesque location and exclusive properties.

The town plays host to leafy streets lined with grand Victorian villas and two historical churches. You'll also find an array of independent shops and the weekly market is a bustling treasure trove filled with local produce and handcrafted goods.

A COLOURFUL ENTRANCE



Drive through the electric gates onto the spacious driveway of Mereleigh, where there's an internal garage and ample room for several cars. The front garden is set back from the road and features colourful borders overflowing with specimen trees and mature shrubs, a vibrant welcome to this beautiful family home.



Access the impressive entrance hall through the porch and take a right turn into the lounge and dining room. This huge space spans the full length of the property, and the Canyon oak flooring leads you towards the light filled dining area with dual aspect windows.





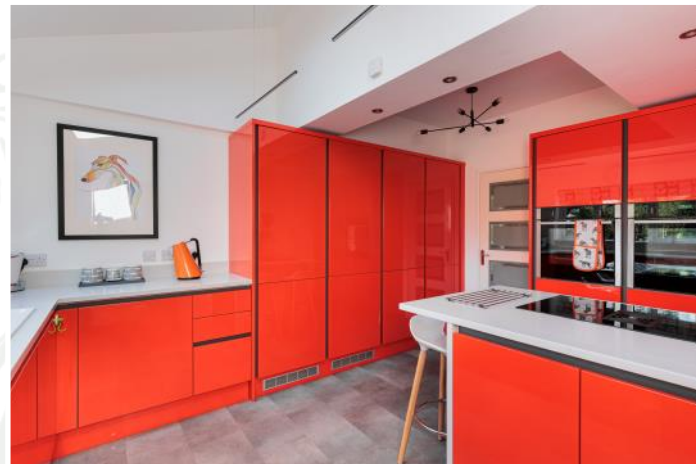
SECLUDED GARDEN

At the rear of the lounge, fling open the French doors where you're greeted with the lush lawned garden looking towards the Mere.

A paved patio area is wrapped inside a canopy of trees and shrubs, providing a private spot for outside dining with family and friends. Dotted around the garden are little nooks and crannies filled with loveable quirks, such as the charming wooden cabin.

Surrounding Lodge Road is a warren of bridleways and walking trails that meander through unspoilt countryside, perfect for immersing yourself in the sounds of nature on leisurely strolls. Rode Hall Gardens, Potters Barn and Alsager Golf and Country Club are also within easy reach.





LUXURY WREN KITCHEN

Return through the lounge and entrance hall to access the kitchen and breakfast room. No stone has been left unturned here when it comes to the finer details and luxury design. Orange Wren cabinets glimmer beneath Velux windows and two suspended ceiling lights, complete with independent remote controls for various light options. Adding even more luxury to the space are Xena quartz worktops, two integrated Neff ovens and AEG tower freezer and fridge. If mornings are usually rushed, save time when brewing your coffee with the handy steaming hot water tap.



Open the door that leads into the WC and utility room, ideal for further storage and keeping the laundry hidden from sight. You also have access to the internal garage from here.



SWEET DREAMS

Retrace your footsteps to the entrance hall and follow the staircase up to the first floor. On the landing is a cosy corner, perfect for slumping into an armchair and doing a spot of reading, and a separate WC and family bathroom to ease the morning rush.

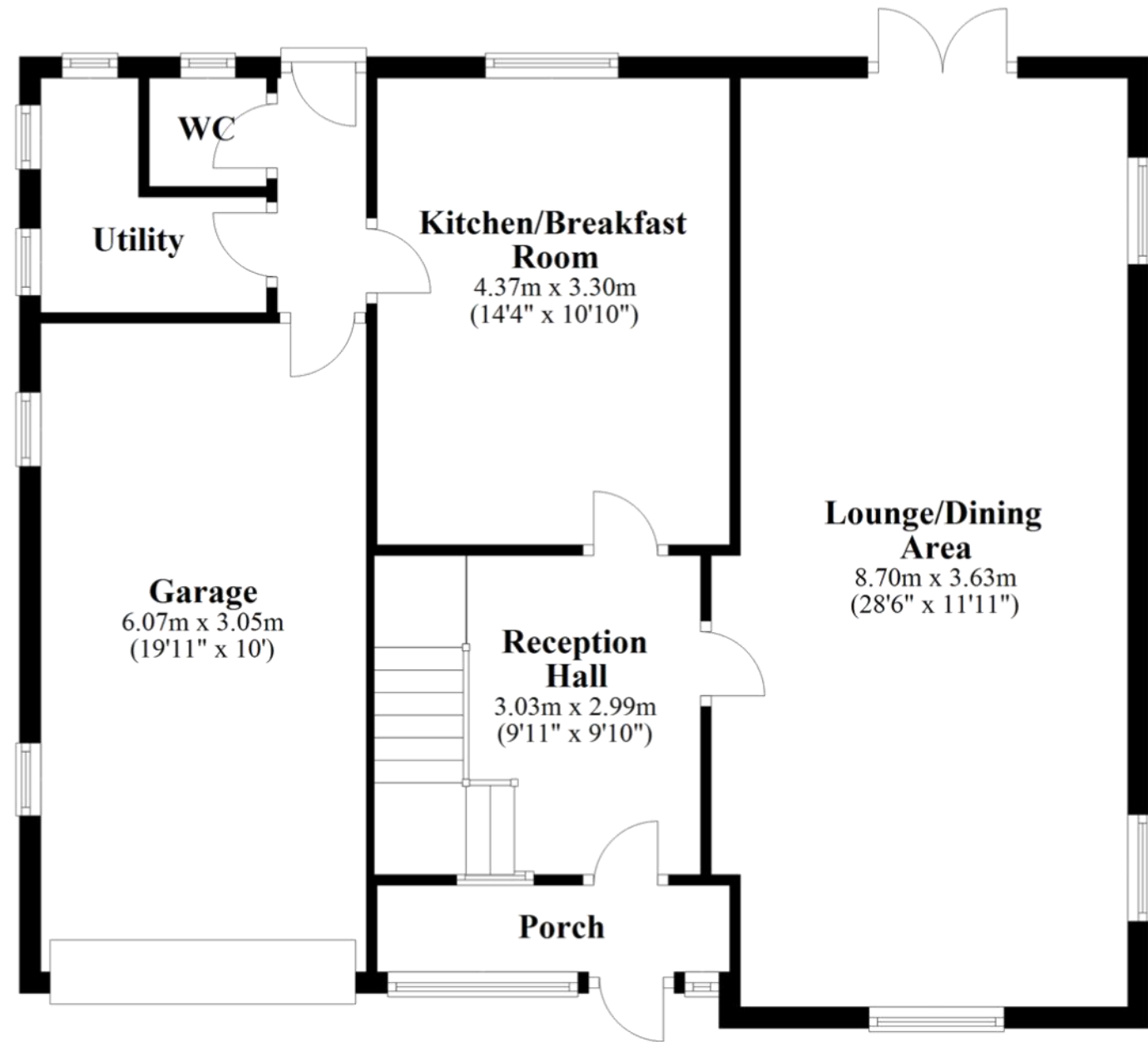
Three double bedrooms are beautifully designed. Bedroom one features stylish fitted wardrobes with integral mirrors, remote control roller blinds and a useful desk area for working or studying. Bedrooms two and three boast large windows that either look onto the front or rear gardens.

The present owners have gone to great lengths to ensure the property is energy efficient wherever possible, with a Hive active heating wired thermostat and Aquafficient instant hot water, which saves both energy and space.

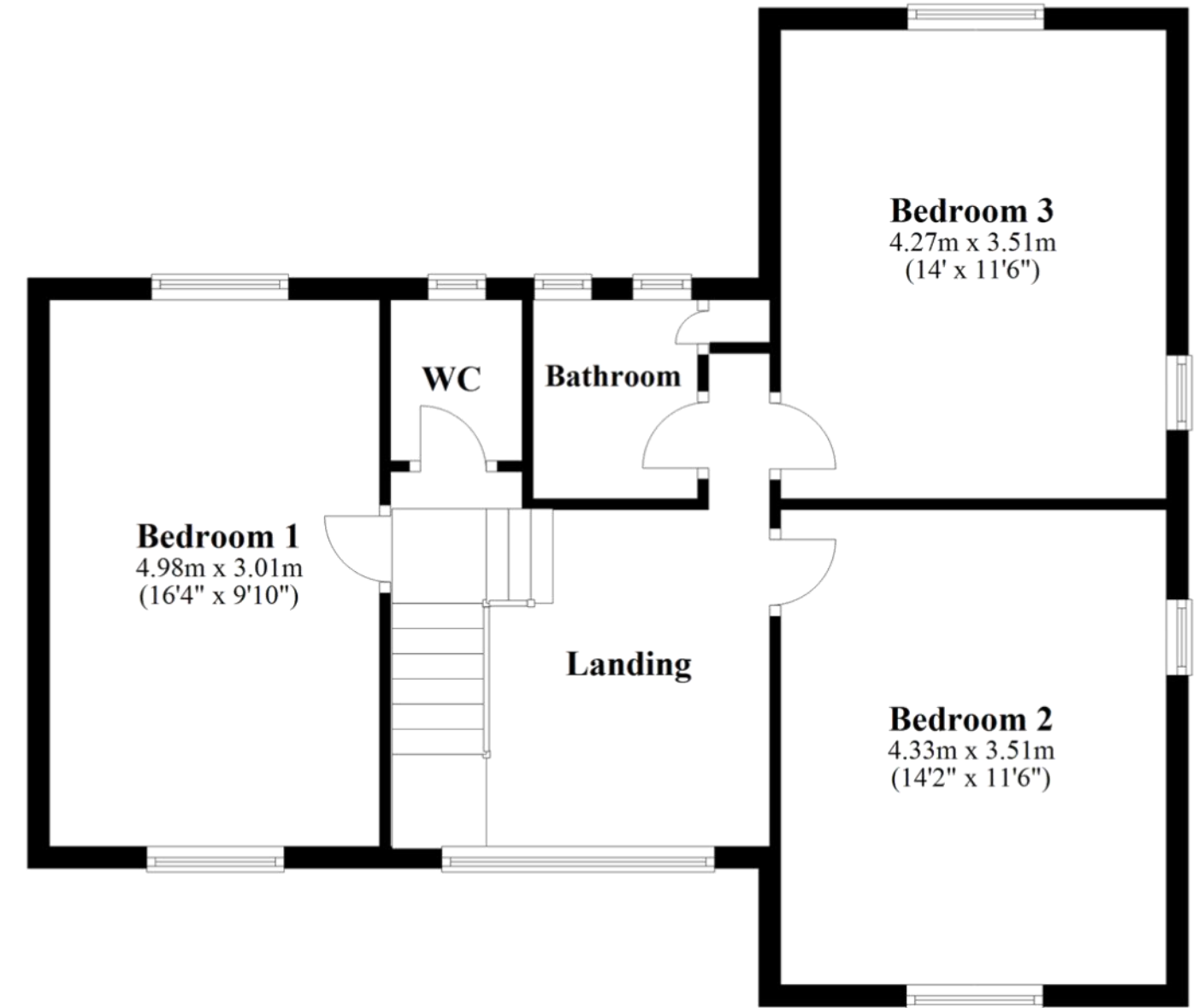




Ground Floor



First Floor





Contact Adam for more information

01538 493333

sales@addisonmead.co.uk

Addison Mead
— EXCLUSIVE —