

The Square



Parwich



Welcome Home

Dating back to the late 17th century, this romantic limestone cottage nestles among the historic, narrow streets of Parwich, a sleepy village where time seems to have stood still, just 7 miles North of the market town of Ashbourne. Featured as one of the best places to live in Britain by the Sunday Times, Parwich is often considered to be one of the Peak Park's well kept secrets due to its location, being nestled over a mile away from the B5056 route to Ashbourne & Bakewell, and around 2.5 miles from the A515 commuter route to Buxton. Among the well kept village greens, you'll find rows of quintessential stone cottages and pretty walking trails.

Although Parwich remains hidden from the busy roads and the hustle and bustle of the more discovered areas of the Peak District, it is still within easy reach and commuting distance of Ashbourne, Matlock, Leek, Derby, Bakewell & Sheffield. Parwich is a vibrant and friendly village with plenty of activities for all if so desired, including a village pub that serves highly rated food and which also houses the village shop, a British Legion club, history society, horticultural society, bowls club tennis club and many more activities and clubs. The village primary school is rated as “good” by OFSTED.





Unique Period Features

But it's not just the location that's brimming with character, this charming cottage is filled to the rafters with period features. It's even believed that part of the building was once a bakery, and in the outhouse you can see the three apertures that would have housed the baker's ovens, complete with chimney and loft storage above.



From School Lane, approach The Square, where you'll see a parking space parallel with the kitchen. Enter the walled front garden via the wooden gate and step into the entrance hall where you immediately you sense the rich history that courses through the walls.

To your right, walk through to the lounge and soak up the cosy atmosphere. Exposed wooden beams and a multi-fuel burner create a characterful space where you can imagine relaxing with the family or reading your favourite book.



Enchanting Walled Garden

Further along the hallway, access the former bakery, which is currently used as an outhouse, and step into the rear, walled garden. As well as being south facing with a lush lawn, patio area and raised flower beds, there are a number of intriguing architectural features to remind you of its past, including a selection of stone troughs and a cheese press. This outdoor space has an enchanting feel with a real sense of tranquillity where you can escape from day-to-day life. On the opposite side from the old bakery, a former pony and trap stable with a loft above lends itself to extending the current living accommodation (subject to planning permission).





Family Dining

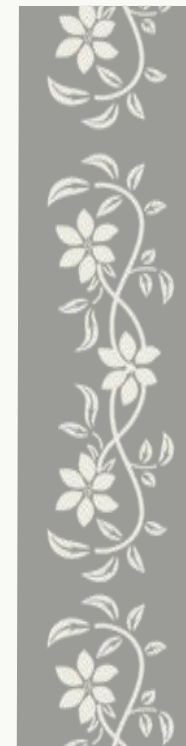
Retrace your steps back through the garden to the entrance hall and enter the dining room. Here you'll find another beautiful multi-fuel stove and ample room for a family dining table. Continue through to the kitchen, a good-sized space for rustling up family feasts, with an exposed beamed ceiling.





A Peaceful Sanctuary

Return to the dining room and climb the staircase to the first-floor landing, which leads into three bedrooms and the family bathroom. Sloped ceilings, picture windows, Suffolk latched cottage doors and a feature fireplace add charisma to the bedrooms, creating a peaceful sanctuary for a good night's sleep.

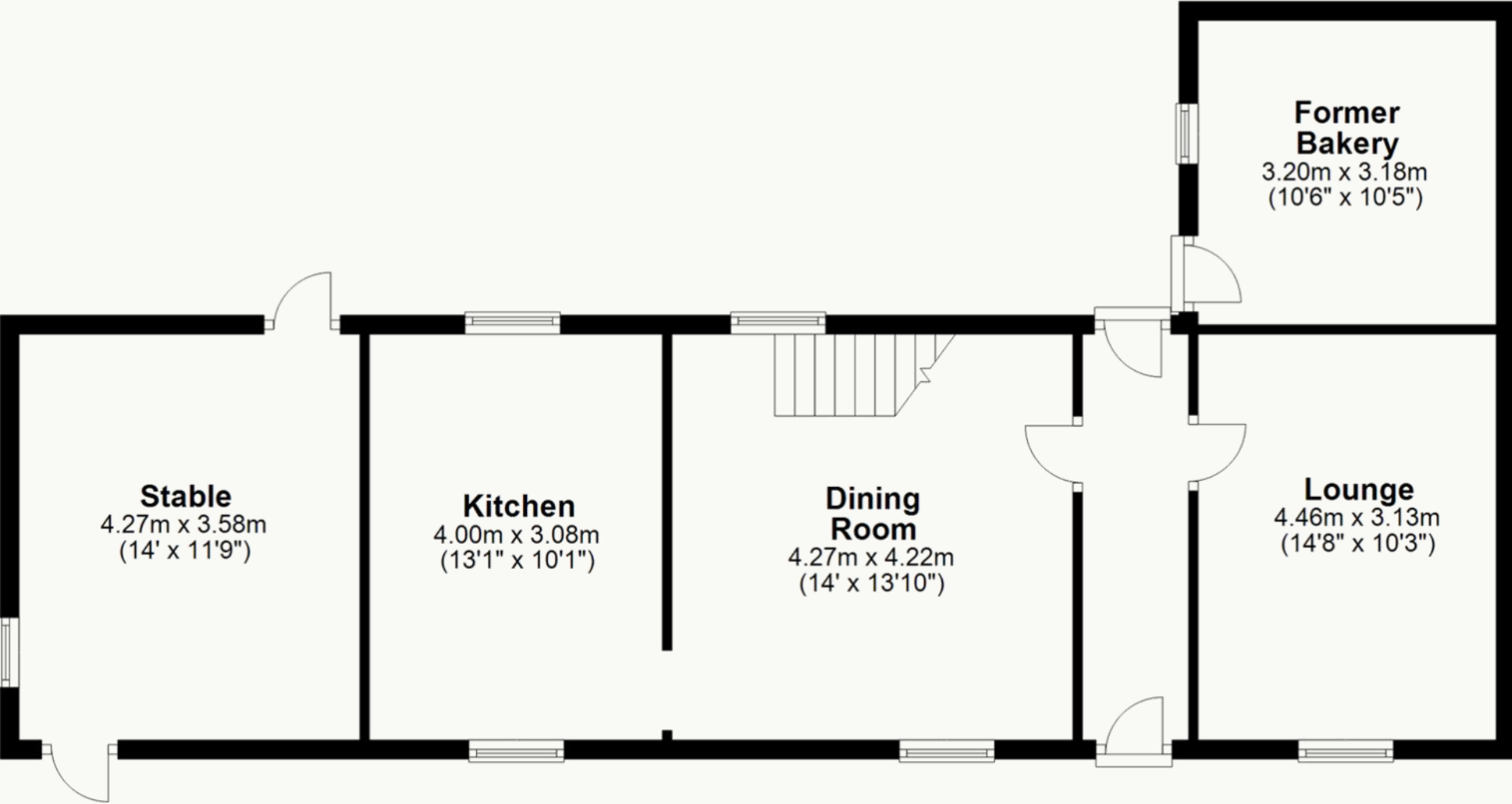


SPACIOUS
BEDROOMS

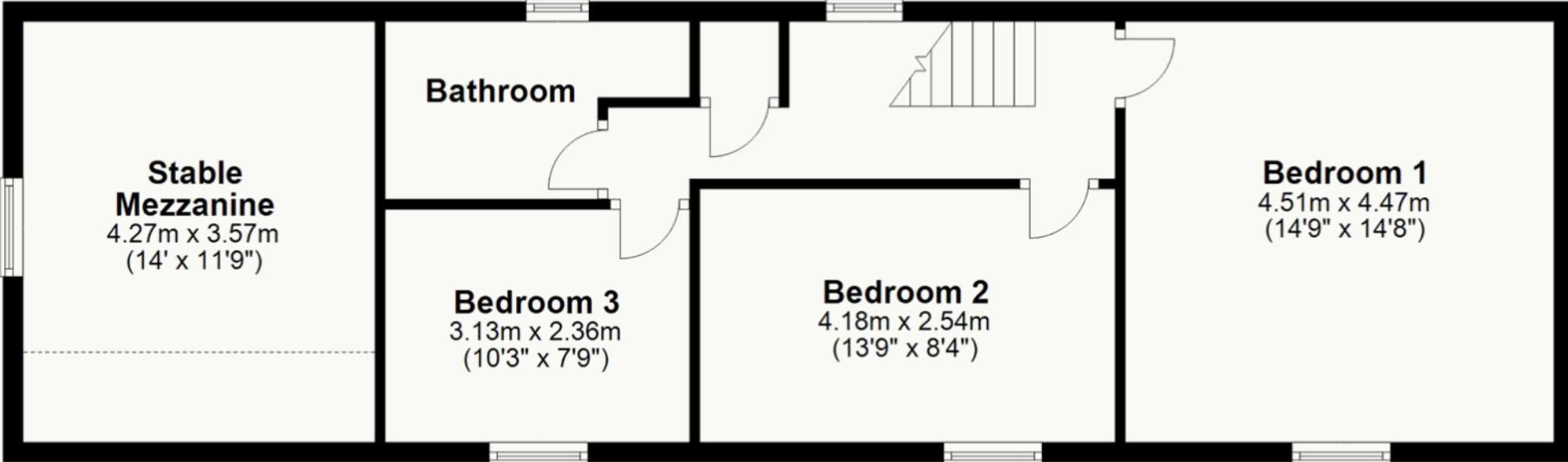




Ground Floor



First Floor





Contact Adam for more information

01538 493333

sales@addisonmead.co.uk

Addison Mead

— EXCLUSIVE —