





Welcome

Enter a world of luxury and tranquillity as you step inside the exclusive Croft Gardens, just moments from the local village amenities of Tean. Unlike many other new-build homes, this development is sympathetic to its surroundings and provides contemporary living in a rural setting. Taking on the aesthetics of a modern barn conversion, 6 Croft Gardens features oversized door arches, barn door style garages and spacious, open-plan living areas.

Leave the hustle and bustle of the outside world behind as you enter the private courtyard and access the property's driveway, which houses up to three vehicles and an electric charging point. The fully plastered integral garage can be used as a home gym or hobby room while the additional garage can be used for a further car and storage above.



Making A Grand Entrance

Step over the threshold into the huge, glass-fronted reception hall, which makes a grand statement and sets the tone for this magnificent home. As light reflects on the glass balustrade and sprawling white walls, you feel the great sense of peace that fills the space.





Designer Dining



Meander through to the kitchen and breakfast room on your left, designed for modern families that want to make the most of their home time. A central island creates a perfect seating area for catching up over morning coffee or chatting about the events of the day. In the summer, open the French doors and invite the sounds of nature to provide a soothing backing track.

Dark blue kitchen units with quartz worktops add a touch of class to the space and are integrated with a full height fridge and freezer, a five-plate induction hob, double oven with plate warmer, an instant boiling water tap and double wine coolers in the island. In addition, you'll find a utility room complete with boiler, washing machine and tumble dryer. There's also plenty of space for a dining table that the family can gather around for hearty homecooked dinners.



Al Fresco Entertaining

Fling open the French doors and step into the garden, which will undoubtedly impress you with its size and countryside views. A large, paved patio area spills onto the lawn, making it the ideal spot for summer barbecues or soaking up the rays with a chilled glass of your favourite tipple. What makes this outdoor space even more desirable is its seclusion from the outside world, the plumbed cold-water tap, power sockets and wall lights.



A Light-Filled Retreat

Retrace your steps to the entrance hall then enter the dining room that stands across from the ground floor WC and storage room. A picture window frames the rear garden and draws in plenty of light. If you need to work from home, this could also double up as a great office space.

Continue through to the lounge, where the piece de resistance is the glass-fronted mezzanine floor and floor-to-ceiling windows that look onto the garden and countryside beyond. Throughout the year you can witness the change of the seasons and the different shades that they bring with them.



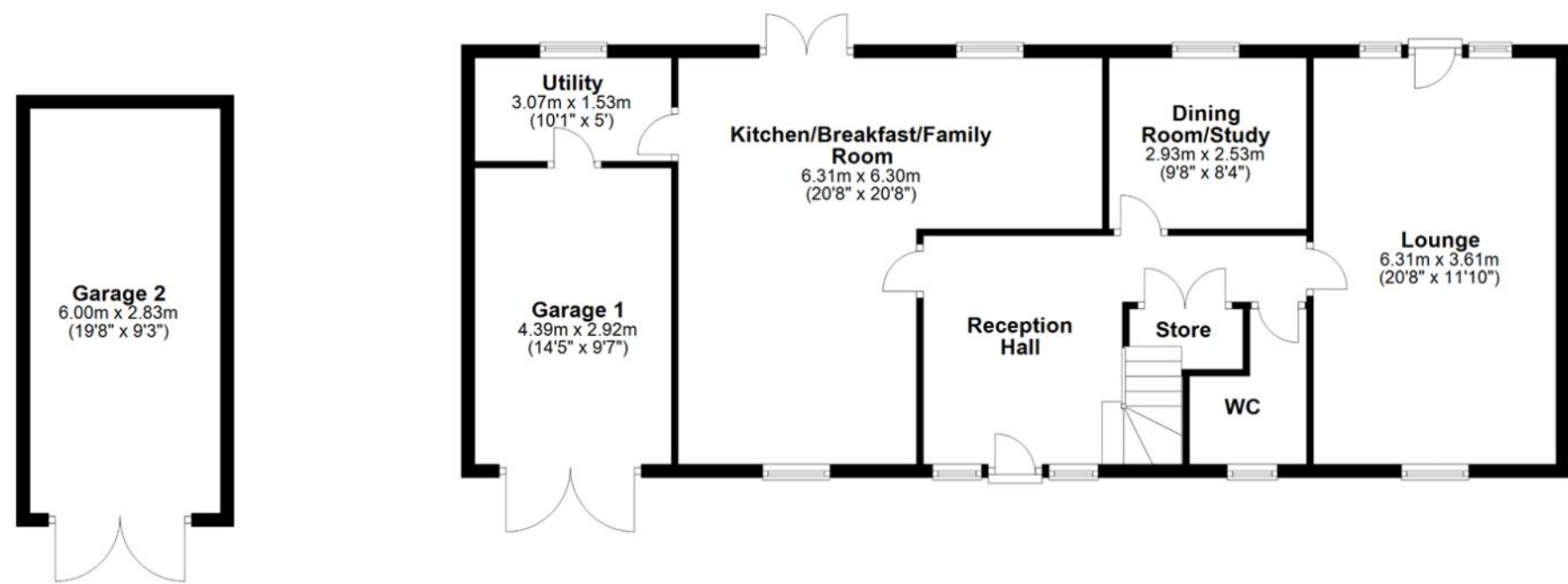
Restful Evenings

From the entrance hall, follow the glass balustrade upstairs to the first floor, where four restful bedrooms await. A family bathroom with walk-in shower and a freestanding slipper bath tempts you to take a little 'me time' and wash away the stresses of the day.

Bedrooms 3 and 4 sit to the rear elevation, offering garden and rural views, while the master bedroom spans the breadth of the house and has a spacious ensuite with slipper bath and walk-in shower. Running alongside bedroom 2, the mezzanine balcony looks over the lounge.



Ground Floor



First Floor





Contact Adam for more information

01538 493333

sales@addisonmead.co.uk

Addison Mead

— EXCLUSIVE —