







## Welcome

Tucked into an exclusive development in the heart of the dramatic Staffordshire Moorlands, Croft Gardens provides contemporary living in an idyllic rural setting. Just moments from the riverside village of Tean, this four-bedroom, detached home lets you enjoy a rustic backdrop as well as local amenities. Travel a little further afield and you'll soon arrive at the market town of Cheadle, where you're spoilt for choice with independent shops, restaurants and laid-back bars.



## A Bucolic Backdrop

As you wind along Tenford Lane, you'll find yourself immersed in bucolic beauty, which wraps around this characterful, double-fronted home. Next to its red-brick exterior, find off-road parking and a double garage – ideal for transforming into a well-equipped gym or even a home cinema.

Step over the threshold and into the entrance hall where you're met with a glass balustrade that enhances the natural light. Straight ahead you'll find the ground floor cloakroom. To your left, make your way through the pale oak and glass double doors into the lounge where a red brick fireplace with a rustic wooden mantel and multi-fuel log burner steals your attention. The plush grey carpet feels soft underfoot, and light streams in from the dual aspect windows. Looking out onto the front elevation, a beautiful bay window adds a sense of both space and privacy.







## A Sleek Family Hub

Retrace your footsteps back to the entrance hall and enter the impressive kitchen and dining area. Undoubtedly the hub of this stylish home, the space features glossy grey units, complemented by the darker tones from the vertical radiator, integrated double oven and wine chillers. Designed with no expense spared, the kitchen also comes equipped with a full-height fridge and freezer, dishwasher and an induction hob with overhead filter hood. In addition, an instant boiling hot water tap makes your morning coffee even more enjoyable. Tucked away behind an oak door, a utility room houses a washing machine and dryer, allowing for a clutter-free kitchen.





## Sounds of Nature

Head over to the French doors and soak up the calming garden view, which extends over the rolling hillside. Walk out onto the paved patio area, where only the relaxing sounds of nature will interrupt your privacy. Imagine peaceful mornings spent hugging your coffee or evenings filled with laughter as you entertain friends and family. A sloping section to the rear of the garden allows you to go wild with your creativity and green fingers, perhaps creating a mini woodland to attract the local wildlife.

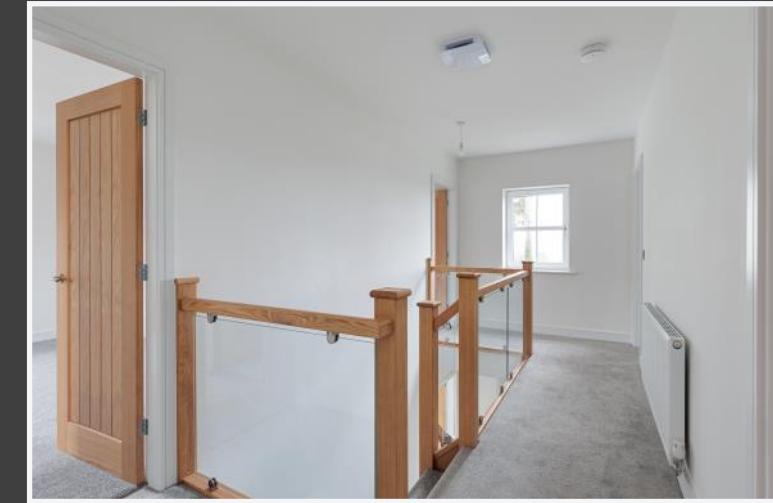




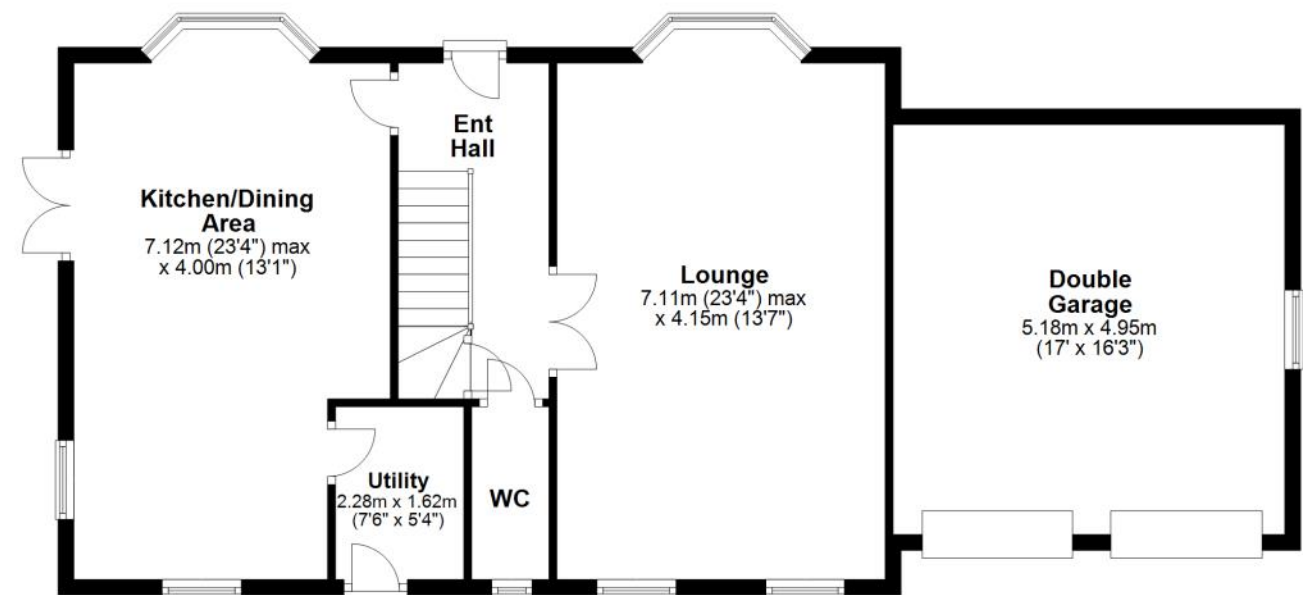


## A Place to Unwind

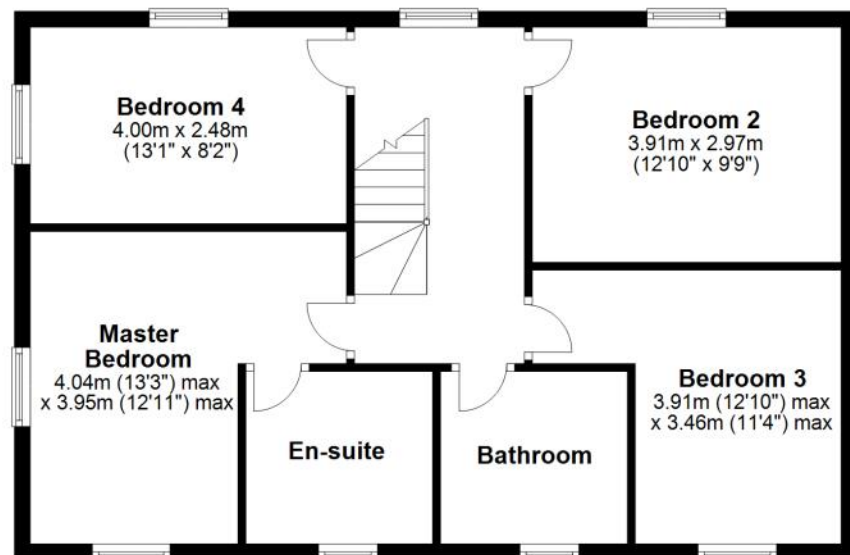
If you can draw yourself away from the tranquillity of the garden, return to the entrance hall and climb the staircase to discover the four bedrooms that lead off from the landing. The master bedroom steals the show with its contemporary ensuite shower room while bedrooms three and four boast breathtaking views over the neighbouring farmland and countryside. The family bathroom features floor-to-ceiling tiles and a bath with overhead rainfall shower where you can enjoy a little 'me time'.



### Ground Floor



### First Floor





Contact Adam for more information

01538 493333

[sales@addisonmead.co.uk](mailto:sales@addisonmead.co.uk)

Addison Mead

— EXCLUSIVE —