



BROOKFIELD HOUSE

Welcome

Fringed by the dramatic Staffordshire Moorlands, Brookfield House sits in the pretty village of Whiston and is surrounded by fabulous country walks. The traditional inn, primary school and golf club make this home ideal for families that like to be close to local amenities as well as enjoying the beauty and tranquillity of the countryside.

Make your way along Brookfield Close and pull onto the driveway where you'll find both an integral and external garage, which can accommodate several cars. Wrapped inside mature hedging and leafy trees, the front outdoor seating area offers a southerly aspect, ideal for soaking up the rays with your favourite beverage.





A grand entrance

Access the property through a modern porchway and step into the entrance hall where a beautiful, tiled floor leads you past the ground floor cloakroom/utility room (with access to the garage) and into the lounge, kitchen and dining room.

Veer right into the lounge, which overlooks the front garden. A stone fireplace with log burner catches the eye as you conjure up scenes of cosy winter evenings relaxing with the family or catching up on your favourite television series.

A magnificent space for entertaining

A raised archway takes you through to the kitchen and living area – the showpiece of Brookfield House. The impressive, open-plan space resembles something you'd see in a glossy magazine with its sleek grey cabinets integrated with a dishwasher, two fridge freezers and two ovens. White brick-style wall tiles inject a contemporary feel to the space and the central island beckons you to loiter with the family over breakfast.

Velux windows and two sliding patio doors ensure the space is drenched in natural light and for those cold winter mornings, underfloor heating takes the chill off your feet. With a large, carpeted living area and space for a six-seater dining table, this is the perfect room for families who love to entertain. In the warmer months, slide open the patio doors to continue the dinner party outdoors.





Enchanting gardens

The rear garden is seriously impressive and will be the envy of any friends that like to immerse themselves in the outdoors. Wander across the lush, wrap around lawn to discover colourful flower-filled borders, countryside views, water feature and enchanting nooks and crannies designed for escaping the stresses of the day.

Sprawled along the rear of the house, a spacious, paved patio area makes a great spot for barbecues and sharing a drink with friends. To the far right of the garden, there's also scope for creating an additional dwelling or even additional off road parking to accommodate a motorhome or works vehicle (subject to planning permission).

Oasis of calm

Retrace your steps back to the entrance hall and head upstairs to the first floor. Leading off the galleried landing are five bedrooms and a family bathroom. Follow the corridor to the showstopping master bedroom which spans the depth of the property and boasts patio doors leading onto a raised decked area overlooking the rear gardens. Unwind in this oasis of calm and retreat from the world with your favourite tippie before retiring for the night.

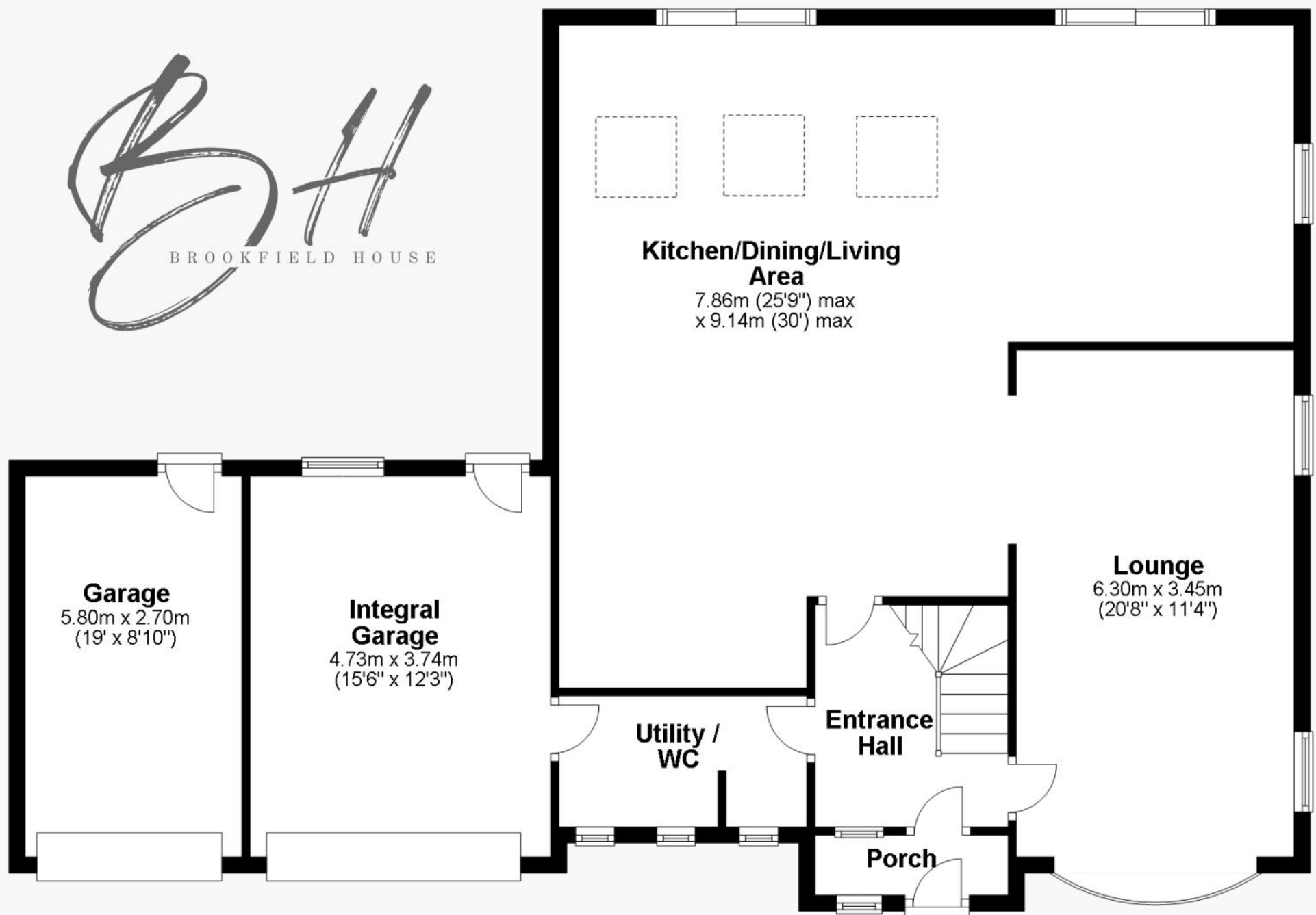
As well as featuring a dressing area, the master bedroom is also complete with a luxurious ensuite bathroom with an oval freestanding bath, round duet basins and a walk-in corner shower.



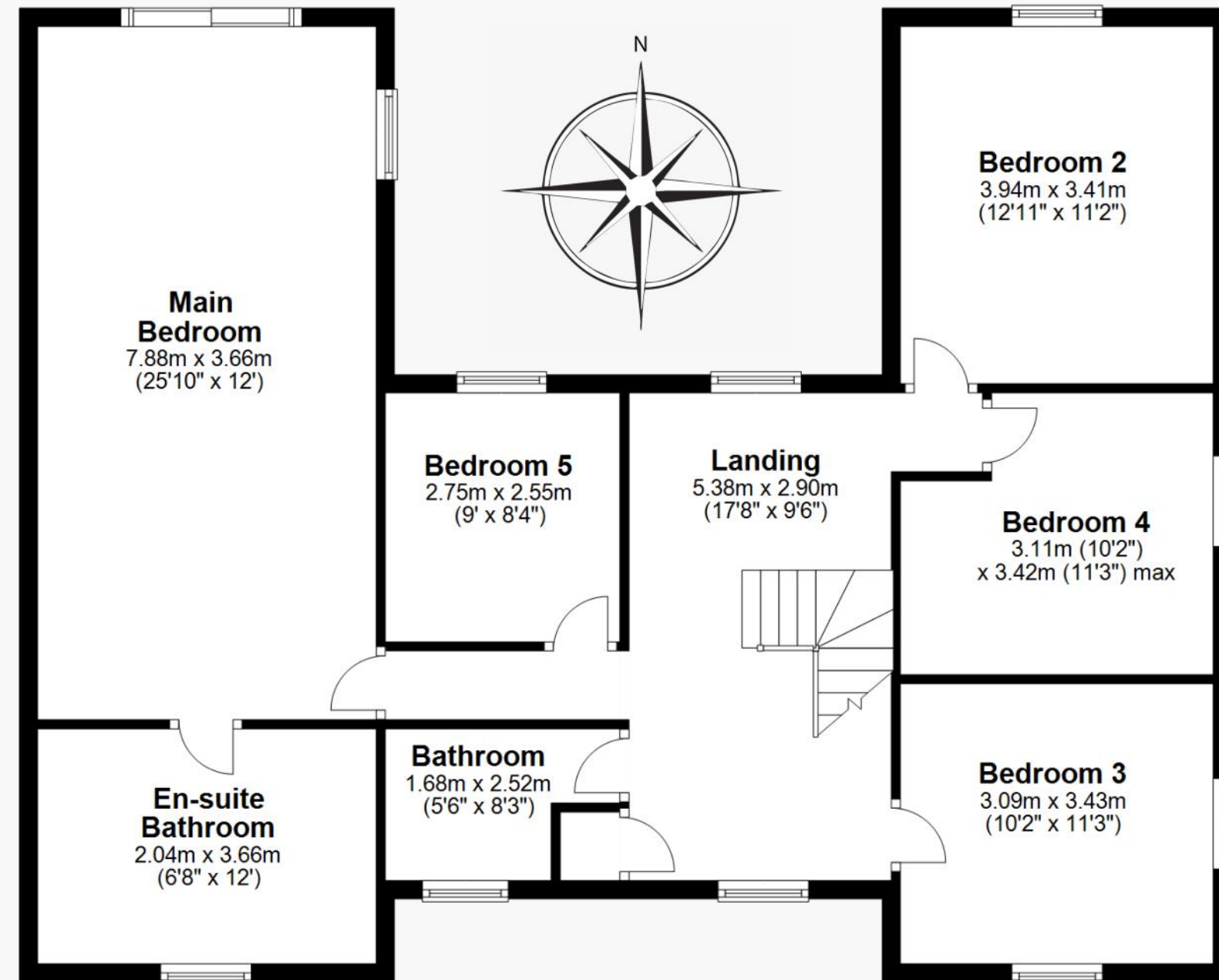




Ground Floor



First Floor





Contact Adam for more information

01538 493333

sales@addisonmead.co.uk



Scan to arrange a viewing

Addison Mead

— EXCLUSIVE —