





Welcome

Nuzzled into the exclusive development of Croft Gardens, this modern, family home is within walking distance of the riverside village of Tean. Just moments from the doorstep, you have access to several local amenities and the beautiful Staffordshire Moorlands. The popular market town of Cheadle is just three miles away and provides you with a wealth of boutique shops, bars and restaurants.



A Private Sanctuary

As you enter Croft Gardens, a spacious central courtyard makes you feel as though you've just arrived in your own tranquil sanctuary. The red brick exterior, porthole window and whitewashed garage door are reminiscent of a converted barn and are in-keeping with the bucolic setting. The paved driveway and off-road parking area provide ample space for several vehicles, and you'll even find an electric car charging point. This is the largest of the mews-style homes and with 188sqm, five bedrooms and three bathrooms, you can enjoy spacious family living.





A Vibrant Welcome

Step into the impressive-glass-fronted reception hall, which is flooded with natural light, and turn right towards the dining room, which sits across from the ground floor cloakroom. The space is ideal for an intimate feast with the family or friends, or alternatively, it can be used as a study area.

Continue into the lounge, which spans the breadth of the property. To the rear, floor-to-ceiling windows and a single glass door frame the garden, providing access to outside. Above you, an oak-framed glass balustrade flanks the mezzanine floor and provides a stunning focal point to the room.

Designed For Entertaining



Step into the garden, where a manicured lawn and paved patio area form an idyllic space for outdoor family time. A gentle sloped section tumbles down to the wooden fencing, providing seclusion and a place to create your own wooded sanctuary. External wall lights, double power socket and cold-water tap complete this wonderful entertaining area.



From the large patio area, enter the contemporary, open-plan kitchen, breakfast and family room through the rear French doors. Designed to impress with its central island, vertical radiator and quartz worktops, this is undoubtedly the tour de force of the home.



Imagine evenings lingering at the breakfast bar, catching up with the family as a gentle breeze and the sweet scents of nature from the garden waft inside. Seamlessly integrated into the units are a full height fridge and freezer, a five-plate induction hob, double oven with plate warmer, double wine coolers in the island and an instant boiling water tap. Tucked into the corner of the room is an additional utility room which conveniently hides the boiler, washing machine and dryer.



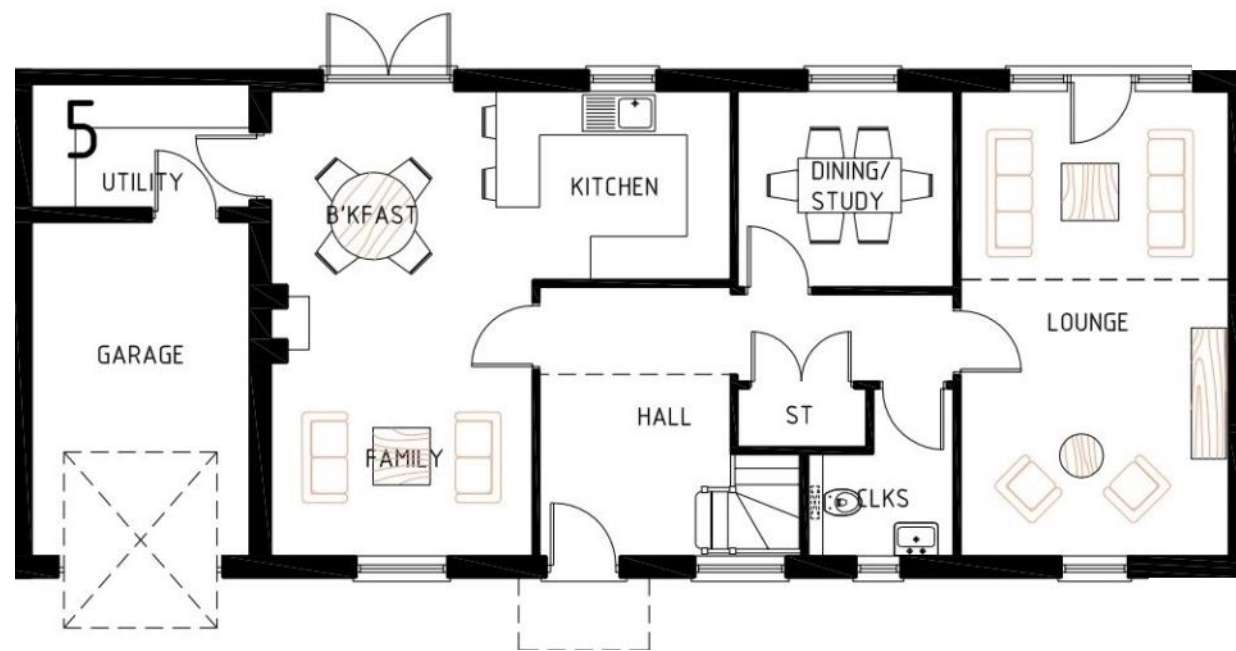
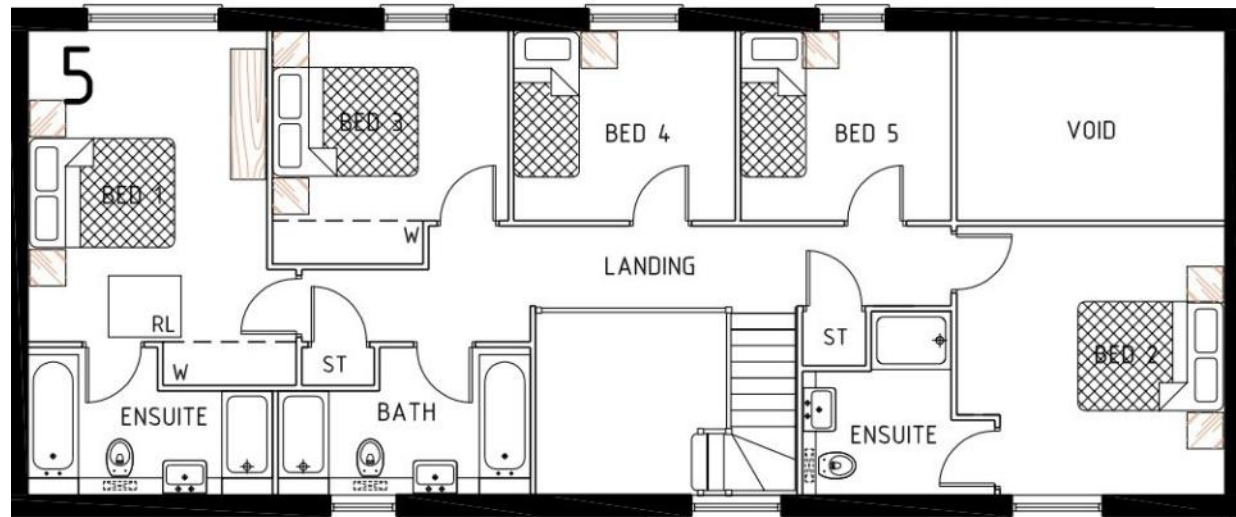


Luxury Living

Make your way back to the hallway where the oak staircase and glass balustrade lead you to the first floor. Equally as impressive as the ground floor, the attention to detail in the sleeping quarters is second-to-none. Beautiful oak doors open onto five bedrooms, four of which overlook the rear lawn and sloped wooded area, where you can drift off to the soothing sound of birdsong.

Bedroom one boasts the kind of bathroom you'd find in a luxury hotel, with an oversized slipper bath, large walk-in shower and mirror with LED lighting. Bedroom two also features an ensuite shower room, and the family bathroom has a freestanding bath, walk-in shower and characterful porthole window.







Contact Adam for more information

01538 493333

sales@addisonmead.co.uk

Addison Mead

EXCLUSIVE