

20



22

SPOUT LANE

The Green



SPOUT LANE
The Green



The ever-popular market town of Cheadle plays host to these exclusive newly built homes. Whilst they sit within a private road off The Green, the local shops, restaurants and schools are just moments away. There are three properties of this design available and Ashgreen Homes have spared no expense when it comes to the interiors, yet there's still plenty of scope for putting your own unique stamp on it.

Home Sweet Home

Approach Spout Lane from The Green and appreciate the peaceful atmosphere as you reach the property. The immaculate block-paved driveway leads you to the entrance hall where light filters through from the rear garden. A ceramic tiled floor and oak door frames set the tone for this contemporary and stylish home. To your right, you'll find a downstairs cloakroom.

Continue straight ahead to the elegant lounge where a striking brick fireplace with chunky oak mantle and log burner is undoubtedly the tour de force. To the right, a vertical column radiator emits extra warmth on cosy winter evenings. In the summer months, fling open the French doors and invite the sounds of nature into the home. Whether you prefer to cosy up with the family or embrace the outdoors, this is a great space for escaping the world and sinking into oversized sofas in front of the fire.





A Feast For Sore Eyes

Retrace your steps back to the entrance hall and explore the kitchen diner, a large space with sleek gloss-finished units and fully integrated appliances. As the light floods through from the French doors, your eyes are immediately drawn to the garden. Imagine rustling up some culinary delights for the family and tucking into a homemade feast around the dining table.

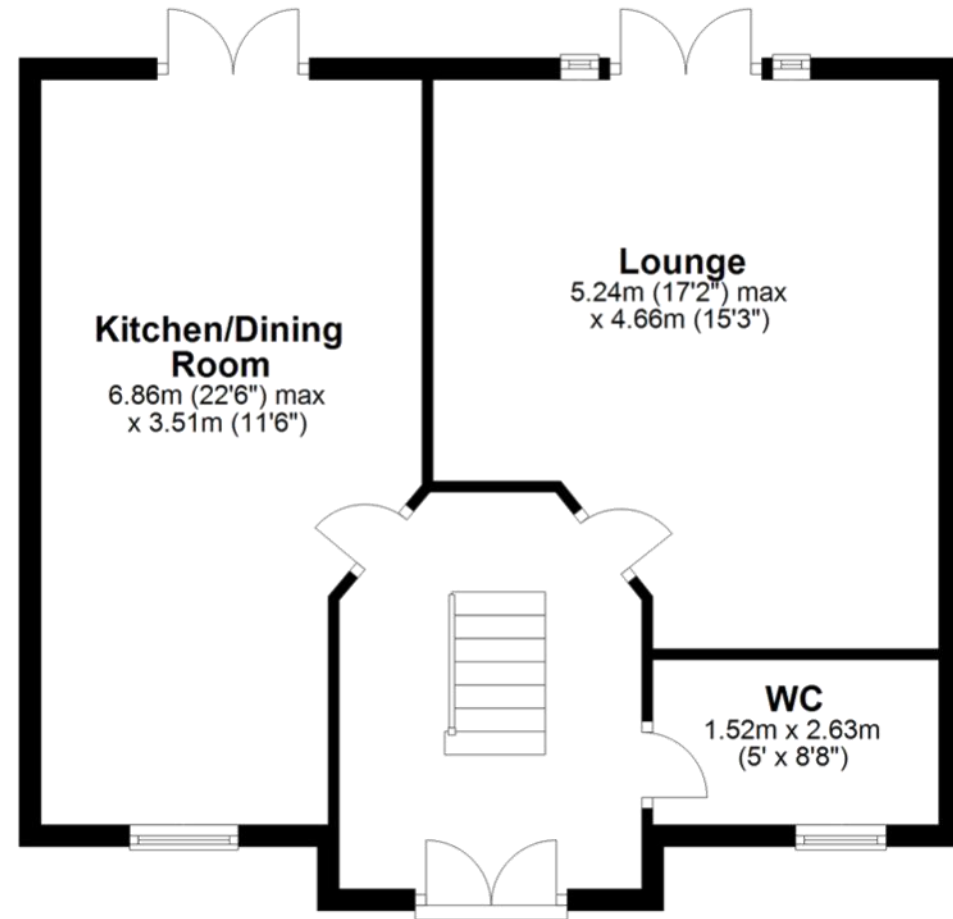
Step through the French doors and admire the lush lawn and patio area where you can indulge in a spot of alfresco dining. The outdoor lighting, electric socket and cold-water tap provide additional convenience whilst entertaining guests.

Sweet Dreams

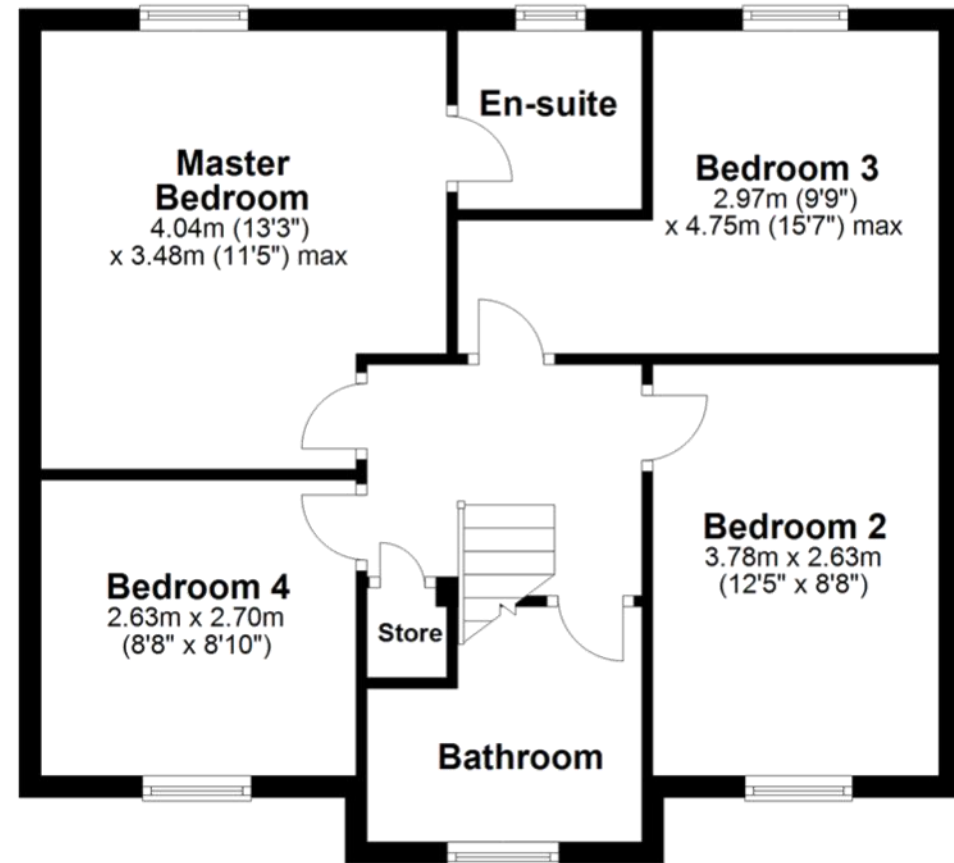
Return to the entrance hall and climb the carpeted staircase to reach the first floor. Contemporary oak doors open into each of the four bedrooms and a family bathroom. The master bedroom looks out onto the garden from a pretty window and has its own ensuite with a glass hand basin, WC and shower enclosure.



Ground Floor



First Floor



20



22

SPOUT LANE

The Green



Contact Adam for more information

01538 493333

sales@addisonmead.co.uk

Addison Mead

— EXCLUSIVE —