



SHAW LANE  
COTTAGE

PARWICH



Dating back to the Elizabethan era, this Grade II Listed, stone cottage was built in 1570 and has all the hallmarks of quintessential England. Its limestone exterior and charming setting in the heart of the sleepy village of Parwich take you back to a time gone by.

Shaw Lane Cottage is known to be one of the oldest standing buildings in the village among an abundance of period properties surrounding the village green and the old pond. Resembling a scene that could have jumped straight out of a picture book, Parwich is a handsome village brimming with character.





## *An Enviably Location*



Flanked by the romantic landscapes of the Peak District National Park, Parwich is just a short distance from the Tissington Trail, the High Peak Trail, and the rolling plateau of White Peak. Also, within seven miles is the market town of Ashbourne, Dovedale, Thor's Cave, and the rural villages of Wetton and Alstonefield. Because of its proximity to so many places of interest, the cottage would make a perfect holiday retreat if you can resist making this your home.





## *Enchanting Garden*

Enter the property grounds through oak gates which lead to the rear entrance where you'll find a paved courtyard and a stone outbuilding, currently used as a laundry store. Step up into the raised garden which has an air of enchantment with its arched seating area, circular lawn, and drystone wall where a beautiful Magnolia overhangs. The enclosed garden is of a good size with little pockets of interest and views out towards the village church and surrounding hills. Even the soil has a fascinating history as it was transferred from the grounds of the old Norman church after being burnt down during the reformation.





*"We discovered the original Inglenook fireplace and wood burner when renovating the house. A true hidden gem as it can be used from both the kitchen and lounge—a real talking point with family and guests."*

## *Olde Worlde Interiors*

As you access the lounge via the main entrance from the lane, you'll be swept away by the olde worlde features. A raised open hearth with wood burning stove immediately vies for your attention while muntin windows and exposed wooden beams add to its cottage charm. An open archway leads you through to the kitchen which has been beautifully fitted with country-style units, chunky oak work surfaces and a large range cooker.

Tucked away to the rear of the cottage is the dining room, a bijou space with beamed ceiling and a door that opens out onto the courtyard. The end extension of the cottage was built in 1830 using the reclaimed stone from the Norman church. You can imagine sunny afternoons enjoying lingering lunches as a gentle breeze wafts in from the outdoors.



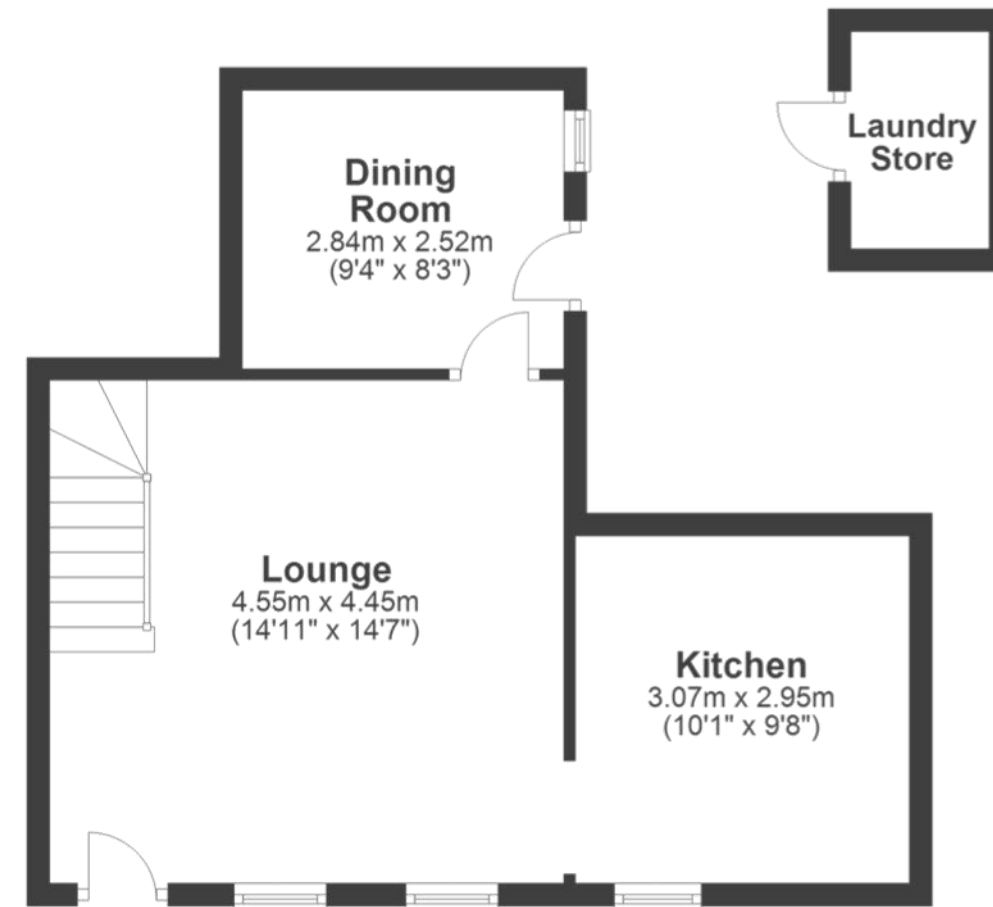


Return to the lounge to climb the stairs to the first floor of the cottage. The landing features an original iron fireplace and winds between each of the rooms. The first room you come to is the bathroom, an impressive space with freestanding, rolltop bath, and a wet-room style shower with tray.

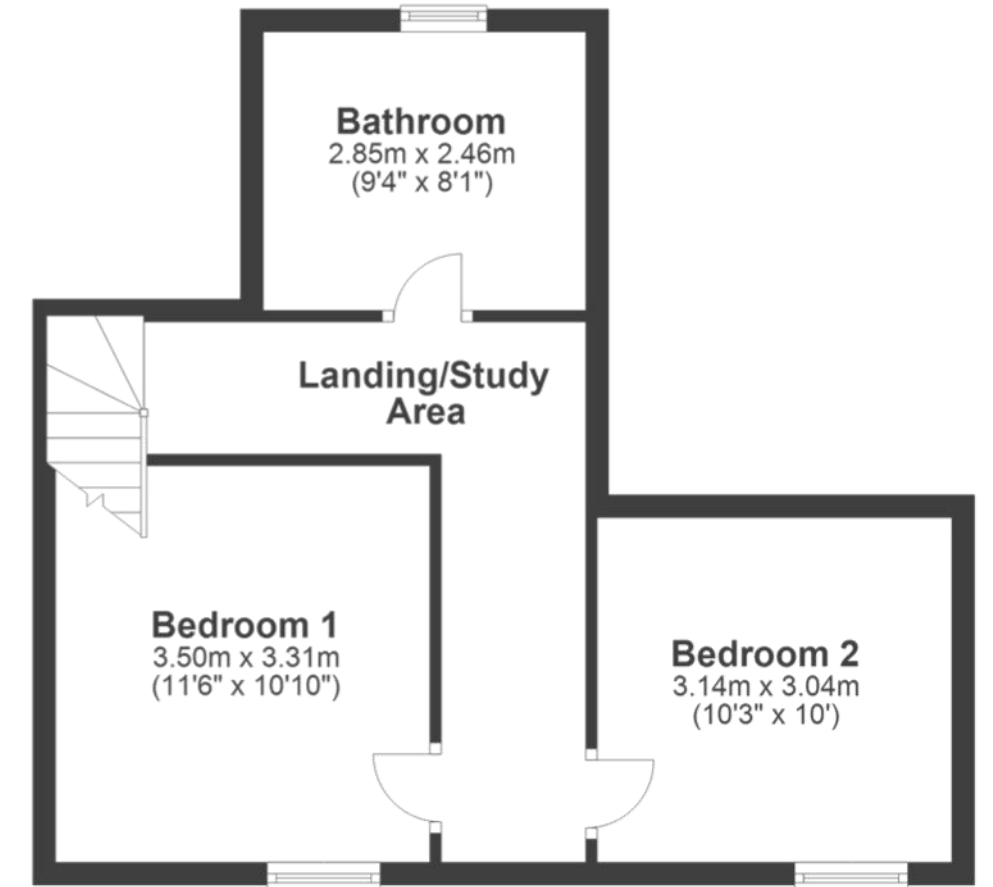
Continue to the two double bedrooms, both of which feature a narrow-beamed ceiling, chunky wooden door with latch, and muntin windows that look onto the lane. The second bedroom boasts an unrivalled view towards the village church which can only be truly appreciated whilst lying in bed on a lazy Sunday morning.



### Ground Floor



### First Floor





Contact Corrie for more information

01538 493333

[sales@addisonmead.co.uk](mailto:sales@addisonmead.co.uk)

Addison Mead  
— EXCLUSIVE —