

4 Bedroom Detached for Sale - Offers Over £700,000

Long Marston Road, Welford on Avon, CV37 8EG



KEY FEATURES

- REDEVELOPMENT OPPORTUNITY • NO ONWARD CHAIN • 3/4 Bedrooms • Double Garage • 2/3 Reception Rooms • 2 Bathrooms • Driveway Parking • Over 0.5 Acres

Description

Nestled in the heart of the highly sought-after village of Welford-on-Avon, this detached property presents a rare opportunity for modernisation or redevelopment. Occupying a generous plot of approximately half an acre, the home offers immense potential for those looking to create their dream residence in a picturesque setting.

The existing layout, as shown in the floor plan, features well-proportioned living spaces, including a lounge, dining room, kitchen, a versatile ground floor bedroom/study and a shower room,. Upstairs, there are three bedrooms, a family bathroom, and a galleried landing. Additionally, the property benefits from a double garage and ample driveway parking.

Welford-on-Avon is a quintessential Warwickshire village known for its vibrant community, excellent local amenities, and outstanding countryside surroundings. With a highly regarded primary school, charming pubs, and easy access to Stratford-upon-Avon, this is an idyllic location for those seeking both tranquillity and convenience.

This is a fantastic opportunity to put your own stamp on a home in a prime location. Offered with no onward chain, early viewing is highly recommended.

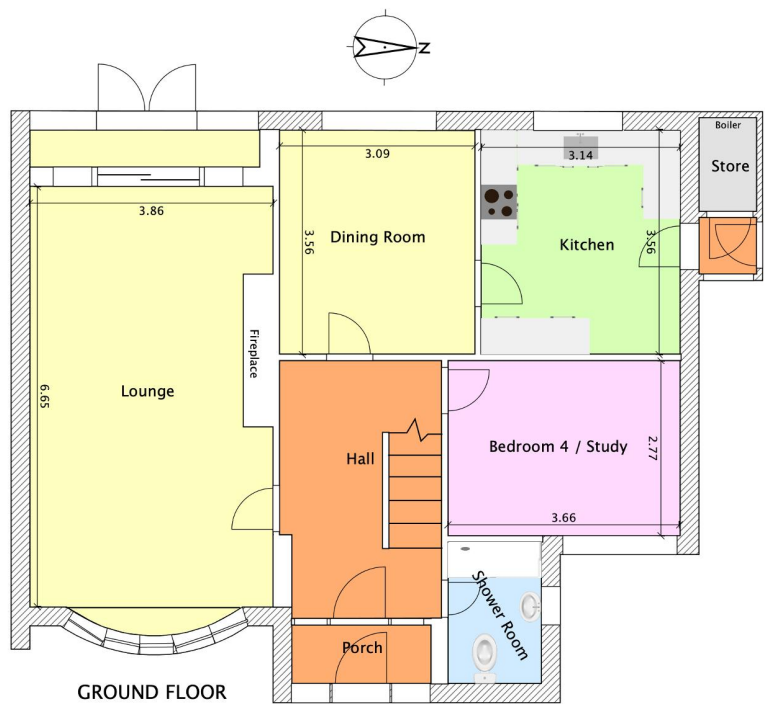
Additional Information

We are informed by the vendor that the property is freehold and benefits from mains electricity and drainage. Heating is by oil fired central heating. Council Tax Band F with Stratford on Avon District Council. All information should be checked by your solicitor prior to exchange of contracts.



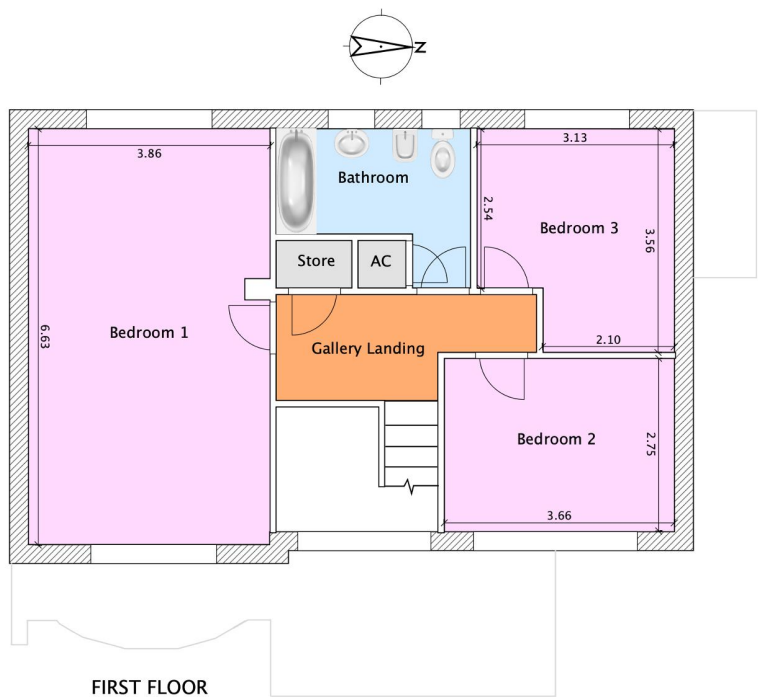






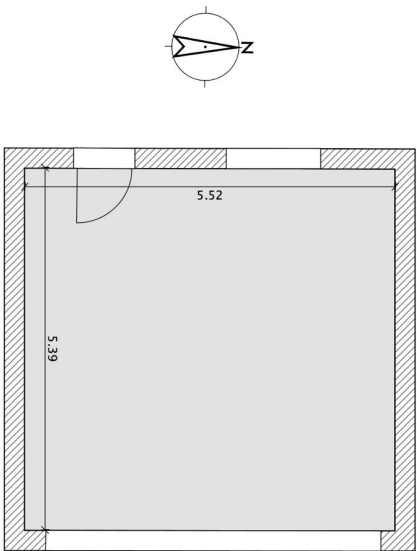
GROUND FLOOR

Approximate Gross Internal Floor Area 1,551 ft² / 144 m² (excl garage)
Indicative floor plans for illustration purposes only



FIRST FLOOR

Indicative floor plans for illustration purposes only



DOUBLE GARAGE

Indicative floor plans for illustration purposes only