



4 Bed Semi-Detached | Byron Road, Stratford upon Avon | Offers Over £500,000

Description

Welcome to this spacious 4-bed semi-detached property nestled in the sought-after Bridgetown school catchment area, just a short stroll from Stratford upon Avon town centre. Boasting a generous plot, this home offers ample outdoor space, perfect for families or those who enjoy gardening.

Upon entering, you're greeted by a welcoming hallway leading to a convenient shower room, ideal for guests. The downstairs accommodation features a dual-aspect lounge, providing plenty of natural light, a dining room perfect for entertaining, and a modern kitchen with a small utility room, catering to the demands of modern living.

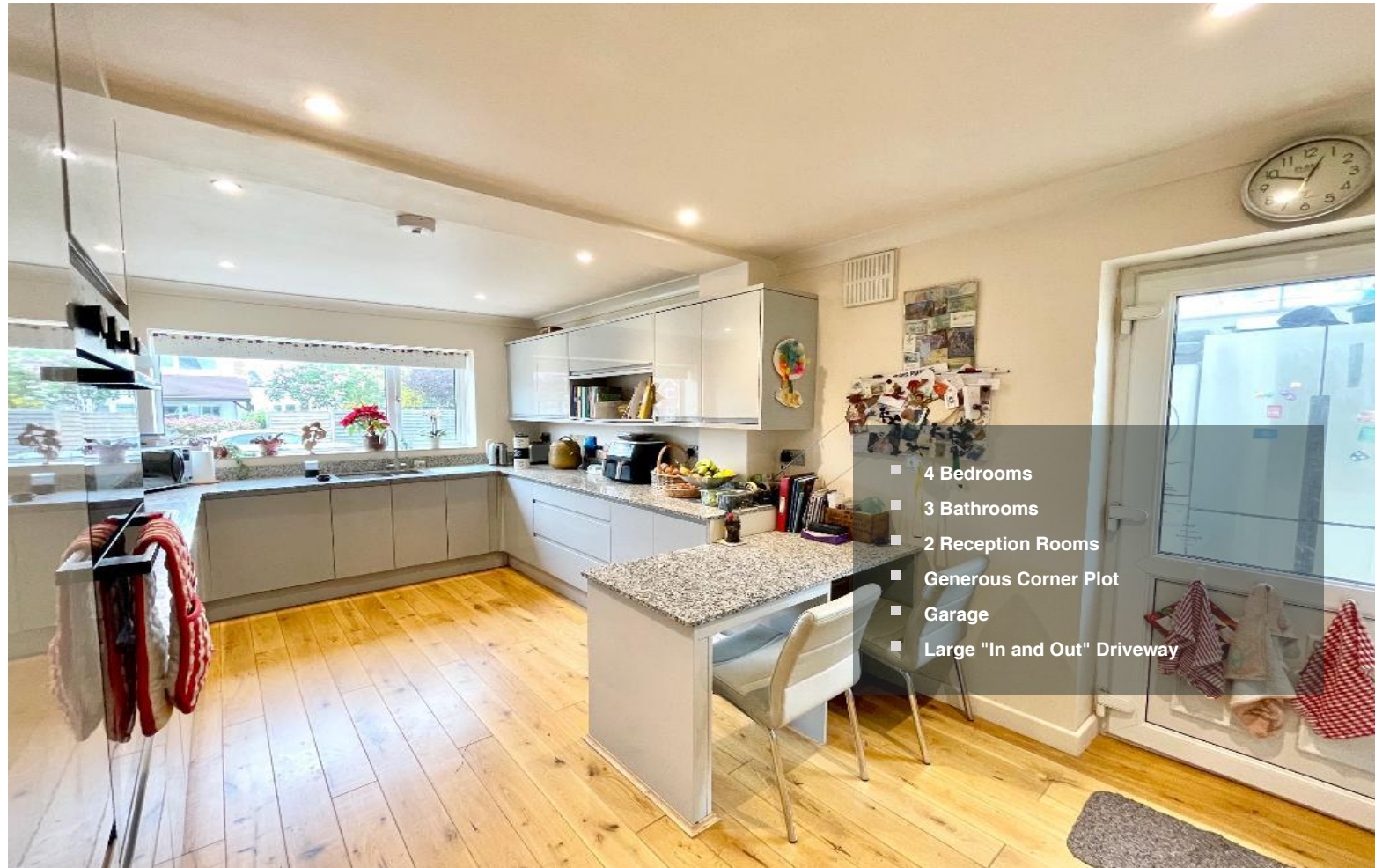
Upstairs, you'll find four double bedrooms, offering comfortable living space for the whole family. Two bathrooms ensure convenience and privacy for busy households.

Outside, the property benefits from a garage with an attached workshop, offering additional storage or hobby space. The good-sized garden provides a peaceful retreat, while driveway parking for multiple vehicles ensures convenience for residents and guests alike.

Don't miss the opportunity to make this fantastic property your new home, combining spacious living with the convenience of its desirable location.

Additional Information

We are informed by the vendor that the property is freehold and benefits from mains gas,



- 4 Bedrooms
- 3 Bathrooms
- 2 Reception Rooms
- Generous Corner Plot
- Garage
- Large "In and Out" Driveway

electricity and drainage. All information should be checked by your solicitor prior to exchange of contracts.

Council Tax Band E with Stratford on Avon District Council.

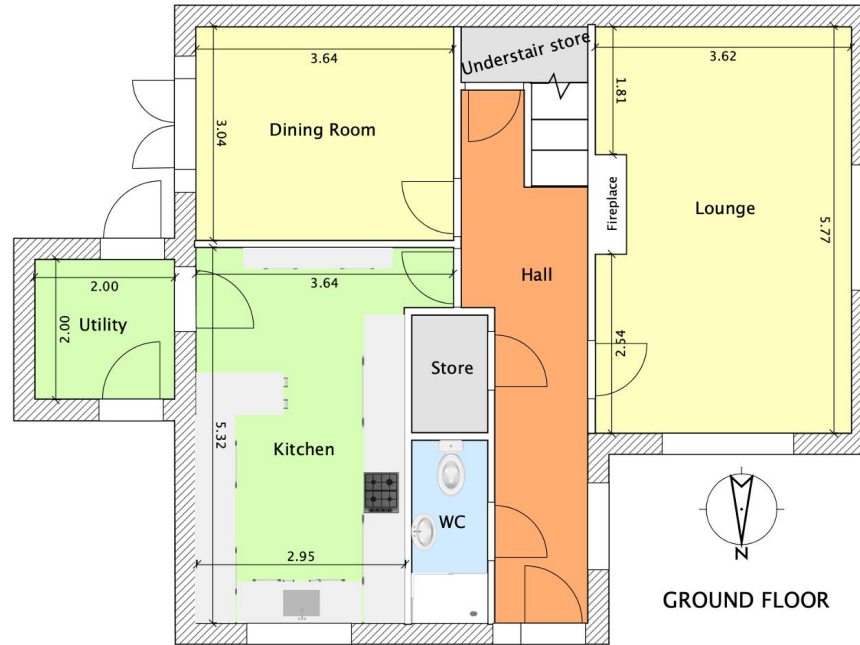


Disclaimer: These particulars are thought to be materially correct though their accuracy is not guaranteed and they do not form part of any contract. All measurements are approximate and we have not tested any fitted appliances, electrical or plumbing installation or central heating systems.











Approximate Gross Internal Floor Area 1,448 ft²
Indicative floor plans for illustration purposes only

CONTACT US

 01789417936

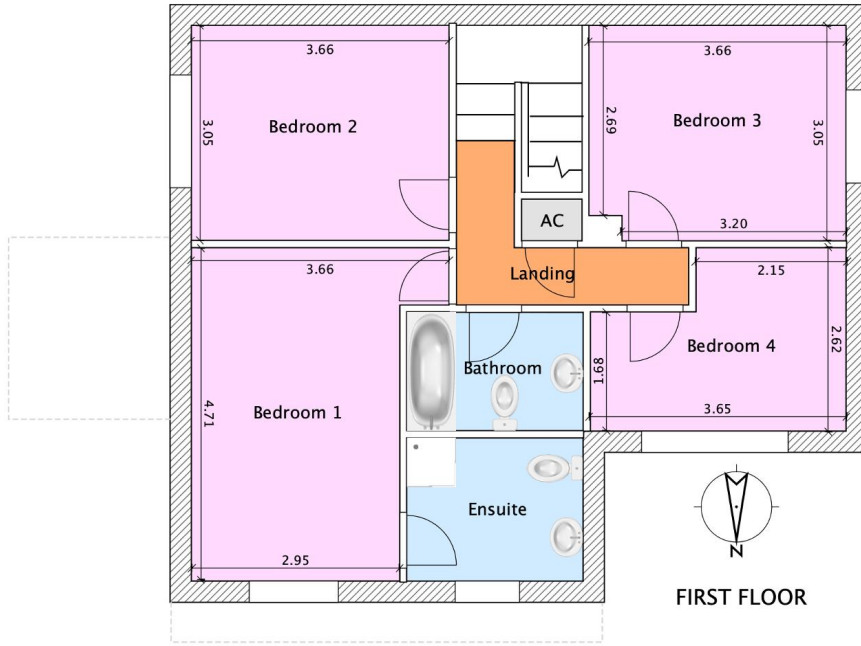
 01789417936

 hello@kennedys-stratford.co.uk

 www.kennedys-stratford.co.uk

 /kennedystateagentstratford





Indicative floor plans for illustration purposes only

