



- Two Bedroom Double Fronted Semi Detached Bungalow
- Two Ground Floor Bedrooms & Two First Floor Rooms
- Bay Fronted Lounge. Open Plan Dining Kitchen
- Modern Three Piece Family Bathroom

**Greenwood Avenue, Blackpool, FY1**

**£159,950**

A TWO BEDROOM SEMI DETACHED BUNGALOW - TWO GROUND FLOOR BEDROOMS AND TWO FIRST FLOOR ROOMS - SPACIOUS BAY FRONTED LOUNGE - OPEN PLAN KITCHEN DINING ROOM - MODERN THREE PIECE SHOWER ROOM - ENCLOSED & LOW MAINTENANCE FRONT AND REAR GARDEN - OFF STREET PARKING - CLOSE TO LOCAL TRANSPORT LINKS & LOCAL AMENITIES



## Property Description

### PORCH

UPVC front door with double glazed opaque glass panel.

### HALL

Doors to all ground floor rooms and fitted carpet.

### LOUNGE

17' 7" x 11' 6" (5.37m x 3.51m) Double glazed bay window to front, living flame gas fire with marble back and hearth with wood surround.

### KITCHEN DINER

19' 0" x 11' 5" (5.81m x 3.50m) Range of wall and base units with worktops to match, integral halogen hob, integral electric oven beneath and extractor fan above, 1.5 composite unit, splash back tiling, plumbing for washing machine, . Double glazed windows to side and rear. Door to side. Door into pantry and stairs to first floor.

### BEDROOM ONE

6' 10" x 6' 0" (2.09m x 1.85m) Double glazed window to front, fitted carpet and fitted wardrobes with over the head bridge.

### BEDROOM TWO

12' 2" x 7' 11" (3.72m x 2.42m) Double glazed window to rear, fitted wardrobes and over the head bridge and radiator.

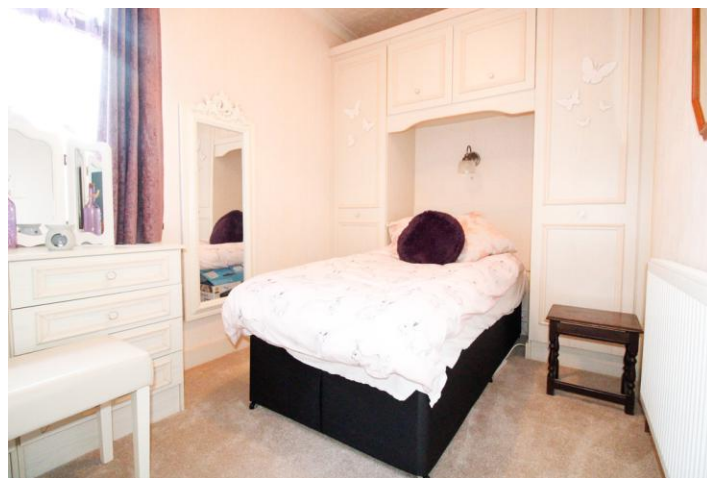
### BATHROOM

6' 10" x 5' 8" (2.09m x 1.75m) A three piece bathroom suite comprising twin tiled shower unit with mains shower above, cabinet wash hand basin and low flush WC. Opaque double glazed window to side, tiled walls

### FIRST FLOOR LADING

Doors to first floor rooms, fitted carpet and storage cupboard.





#### LOFT ROOM ONE

10' 7" x 10' 7" (3.25m x 3.25m) Double glazed Velux style skylight, fitted carpet and fitted wardrobes.

#### LOFT ROOM TWO

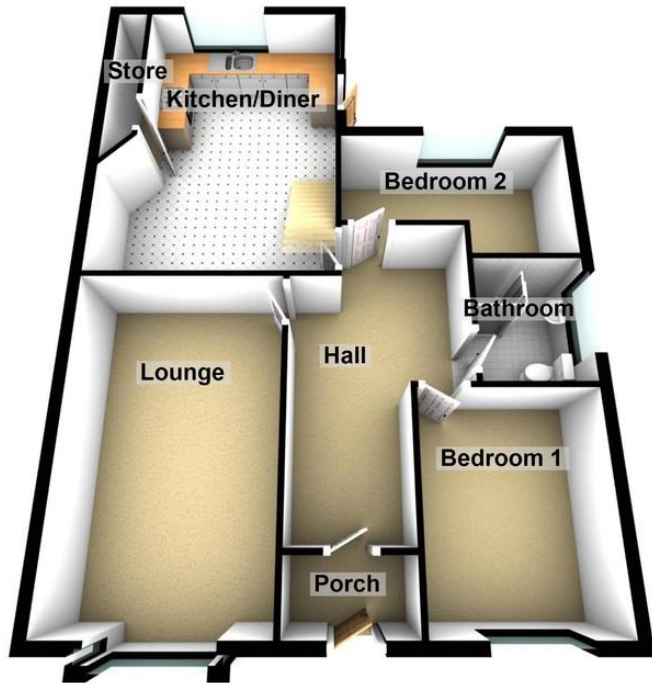
15' 4" x 7' 8" (4.68m x 2.34m) Double glazed Velux style skylight and fitted carpet.

#### GARDENS

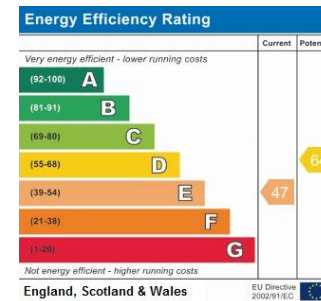
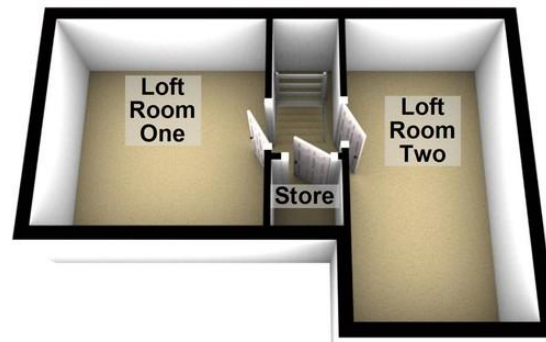
Low maintenance front garden with Indian paving giving off street parking along with decorative shaled areas and gated driveway. The rear garden is nicely enclosed and sunny with flagged patio area and lawned area with timber store.



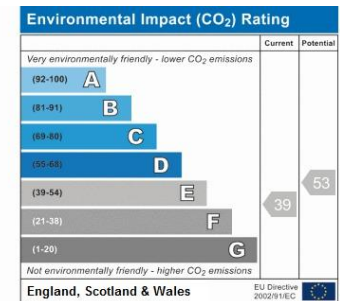
Ground Floor



First Floor



Address:  
Greenwood Avenue, Blackpool, FY1



1B Lancaster House, Amy Johnson Way, Blackpool, Lancashire, FY4 2RP

www.romanjamesstates.co.uk  
01253 978888  
info@romanjamesstates.co.uk

Agents Note: Whilst every care has been taken to prepare these sales particulars, they are for guidance purposes only. All measurements are approximate are for general guidance purposes only and whilst every care has been taken to ensure their accuracy, they should not be relied upon and potential buyers are advised to recheck the measurements