



8-9 Carlisle Street, London, W1D 3BP

Self Contained 3,000 sq ft Ground & Lower Ground To Let
(will suit a variety of uses)

- Newly Refurbished CAT A Commercial Space
- Natural Light from the Front & Rear
- New End of Trip Facilities
- Fantastic Soho Location
- Self Contained
- Demised WC's & Shower
- Branding Opportunities

8-9 Carlisle Street

London, W1D 3BP

CROSSLAND
OTTER HUNT



Summary

Available Size	3,705 sq ft / 344.21 sq m
Rent	£55 per sq ft
EPC	Upon enquiry

Accommodation

The accommodation comprises the following areas:

Name	sq ft	Rent (sq ft)	Rates Payable	Service charge	Total month	Availability
Ground - & Lower Ground	3,705	£55	£22.76 /sq ft	£3.28 /sq ft	£25,021.10	Available
Total	3,705	£55			£25,021.10	

Description

The building is currently undergoing a comprehensive refurbishment throughout, with new bike racks and a shower being installed.

The self contained ground and lower ground floors are accessed directly from the street, with ample branding potential. The space is to be refurbished to a CAT A specification with new AC & LED lighting. There are excellent floor to ceiling heights and a wealth of character features.

The fully fitted and furnished 1,385 sq ft 2nd floor is also available.

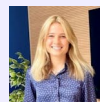
Location

The building is located on the south side of Carlisle Street in close proximity to Soho Square and the Dean Street entrance to Tottenham Court Road Station (Elizabeth, Central and Northern Lines).



Phil Frenay

02073992742 | 07818566174
phil@coh.eu



Charlotte Steele

020 7408 1114 | 07503625481
charlotte@coh.eu

Nick Haywood (sbh Page & Read)

0207 474 9898 | 07836 554624
nick@sbhpageread.co.uk