



## 27 Soho Square, London, W1D 3QR

---

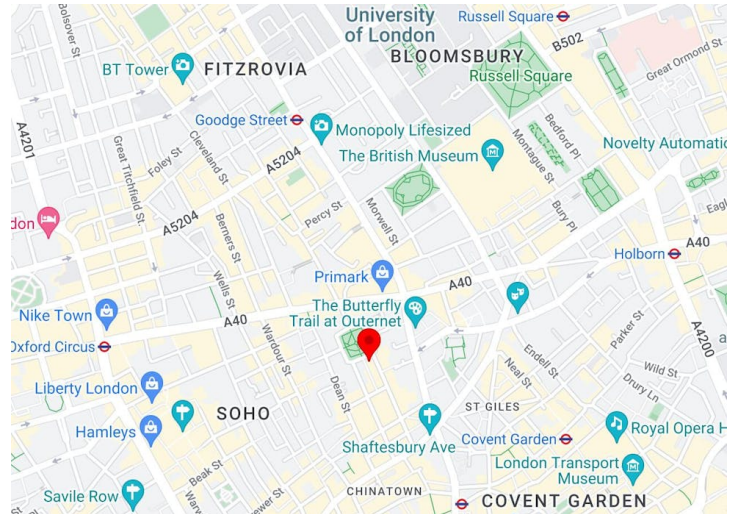
### 3rd floor office with square views

- Refurbished reception
- Fully accessible raised floor
- Showers and secure cycle storage
- Exposed VRF air conditioning
- Windows overlooking Soho Square
- Demised WC's
- LED lighting throughout
- Excellent natural light

# 27 Soho Square

London, W1D 3QR

CROSSLAND  
OTTER HUNT



## Summary

|                |                           |
|----------------|---------------------------|
| Available Size | 4,881 sq ft / 453.46 sq m |
| Rent           | £52.50 per sq ft          |
| Rateable Value | £357,500.00               |
| Service Charge | £13.97 per sq ft          |
| EPC            | Upon enquiry              |

## Accommodation

The accommodation comprises the following areas:

| Name         | sq ft        | sq m          | Rent (sq ft)  | Rates Payable (sq ft) | Service Charge (sq ft) | Total month       |
|--------------|--------------|---------------|---------------|-----------------------|------------------------|-------------------|
| 3rd          | 4,881        | 453.46        | £52.50        | £41.46                | £13.97                 | £43,900.53        |
| <b>Total</b> | <b>4,881</b> | <b>453.46</b> | <b>£52.50</b> | <b>£41.46</b>         | <b>£13.97</b>          | <b>£43,900.53</b> |

## Description

The building is situated on the southern side of the Square where it intersects with Greek Street. Both the reception area and the space itself have undergone full refurbishment to offer high-spec Grade A office accommodations, boasting spectacular views overlooking the Square.

## Location

Soho Square stands as one of the West End's finest garden squares. It is conveniently located just moments away from Tottenham Court Road Station, granting access to the Central and Northern Underground lines, as well as the newly opened Elizabeth Line

## Terms

New lease direct from the Landlord subject to a mutual rolling break from December 2025



### Richard Lockhart

020 7399 2735 | 07780661096

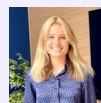
richard@coh.eu



### Phil Frenay

02073992742 | 07818566174

phil@coh.eu



### Charlotte Steele

020 7408 1114 | 07503625481

charlotte@coh.eu

### Andrew Okin (Edward Charles & Partners)

020 7009 2300 | 07887 714491

### Sean Cunningham (Edward Charles & Partners)

020 7009 2300 | 07827 985858