

LIME

ST

24 / A

LDN

EC3

BUILDING

24A Lime Street has been sustainably refurbished to provide contemporary newly fitted offices of 2,223 sq ft and 1,915 sq ft on the 4th and 5th floors.

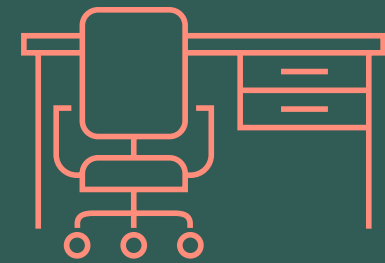
The building sits at the heart of the City's insurance district and is a short walk away from Lloyd's of London.



24/A LIME STREET / EC3



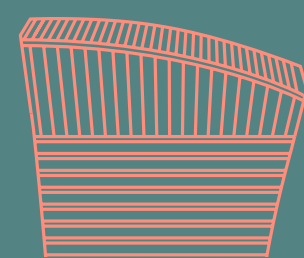
5th floor kitchenette



Brand new fully fitted space



Fully cabled



Prime EC3 location



Excellent transport connections



Exterior façade onto Lime Street

OVERVIEW



4th floor open plan workspace



4th floor meeting room

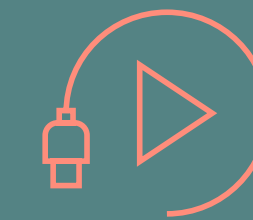
FEATURES



Bike spaces



On floor shower



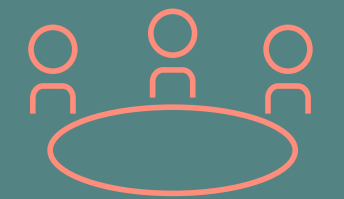
Fully fitted Plug & Play office floors



Redesigned Entrance



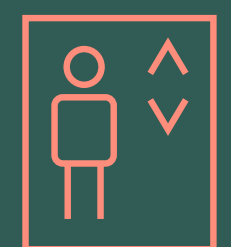
Excellent natural light



Characterful "Oval Room"



VRF air conditioning



2 x passenger lifts

The 4th and 5th floors have been carefully considered throughout using contemporary design details.

The flexible workspaces feature dual aspect windows and offer tenants a bright and inspiring work environment.

They also provide collaboration / breakout spaces with kitchenette, meeting rooms and a welcome area for visitors.

THE KEY



5th floor welcome area

FLOOR

Floor	Sq Ft	Sq M
4th	2,223	207
5th	1,915	178
TOTAL	4,138	385



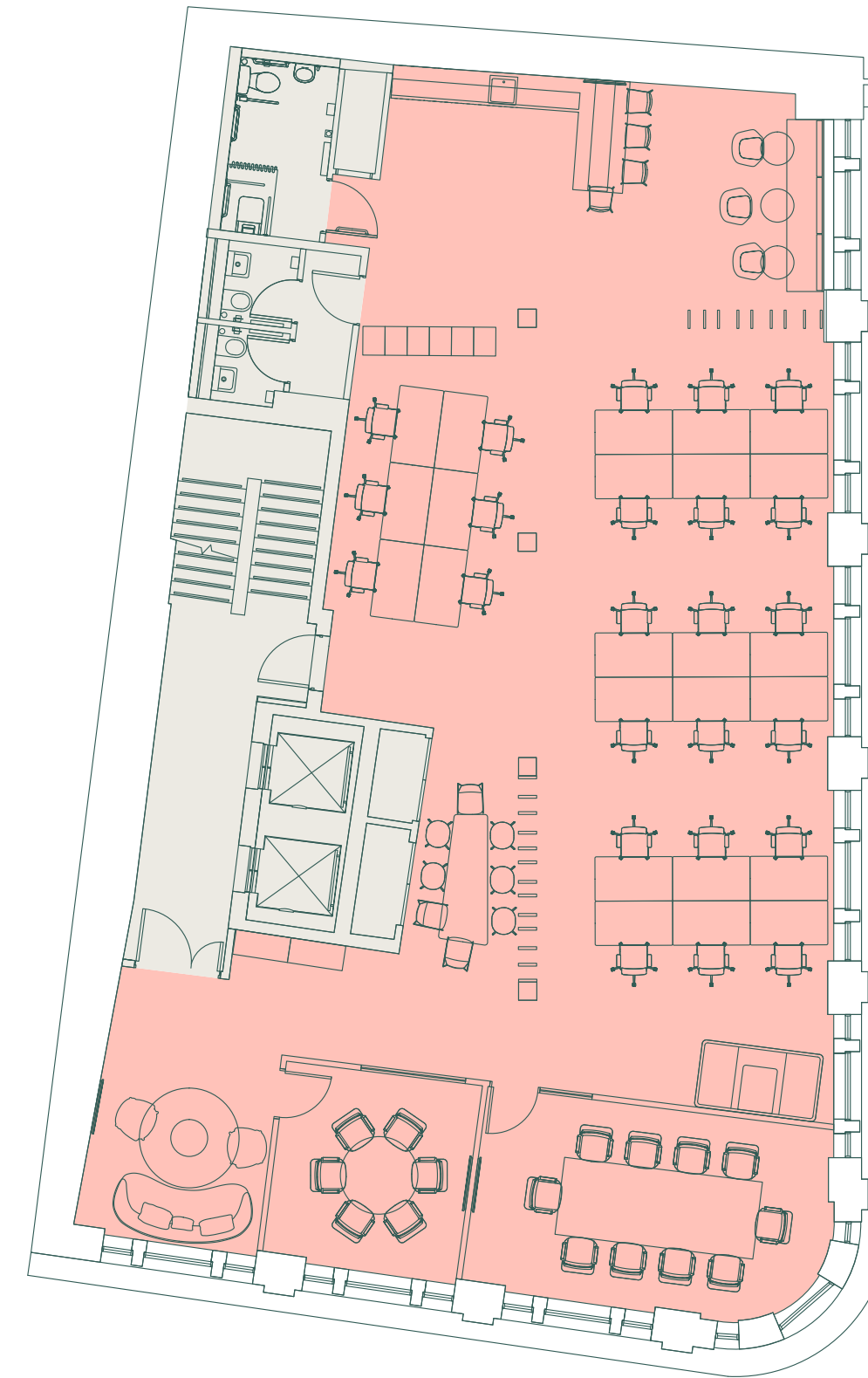
5th floor open plan workspace



4th floor kitchenette

4TH FLOOR - SPACE PLAN

2,223 SQ FT / 207 SQ M



Fenchurch Street

Lime Street

Open plan workstations	24-30
10 person meeting room	1
6 person meeting room	1
Zoom room	1
Kitchenette / breakout area	1
Welcome area	1

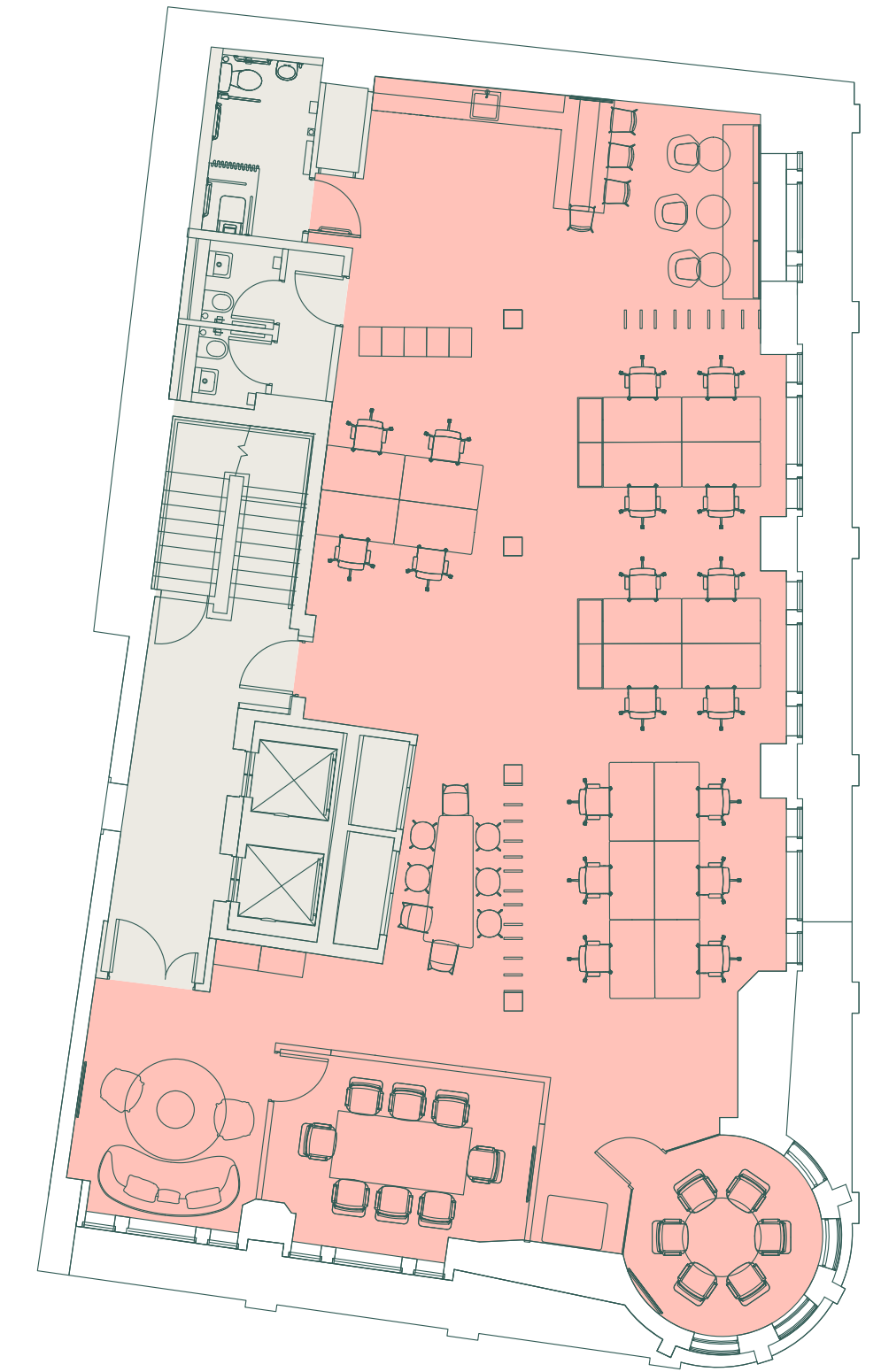
- Office
- Core

Plans not to scale.
For indicative purposes only.



5TH FLOOR - SPACE PLAN

1,915 SQ FT / 178 SQ M



Fenchurch Street

Lime Street

Open plan workstations	18-20
8 person meeting room	1
6 person meeting room	1
Zoom room	1
Kitchenette / breakout area	1
Welcome area	1

SPACE

LOCATION

24A Lime Street offers occupiers access to the best of the City's amenities and transport links.

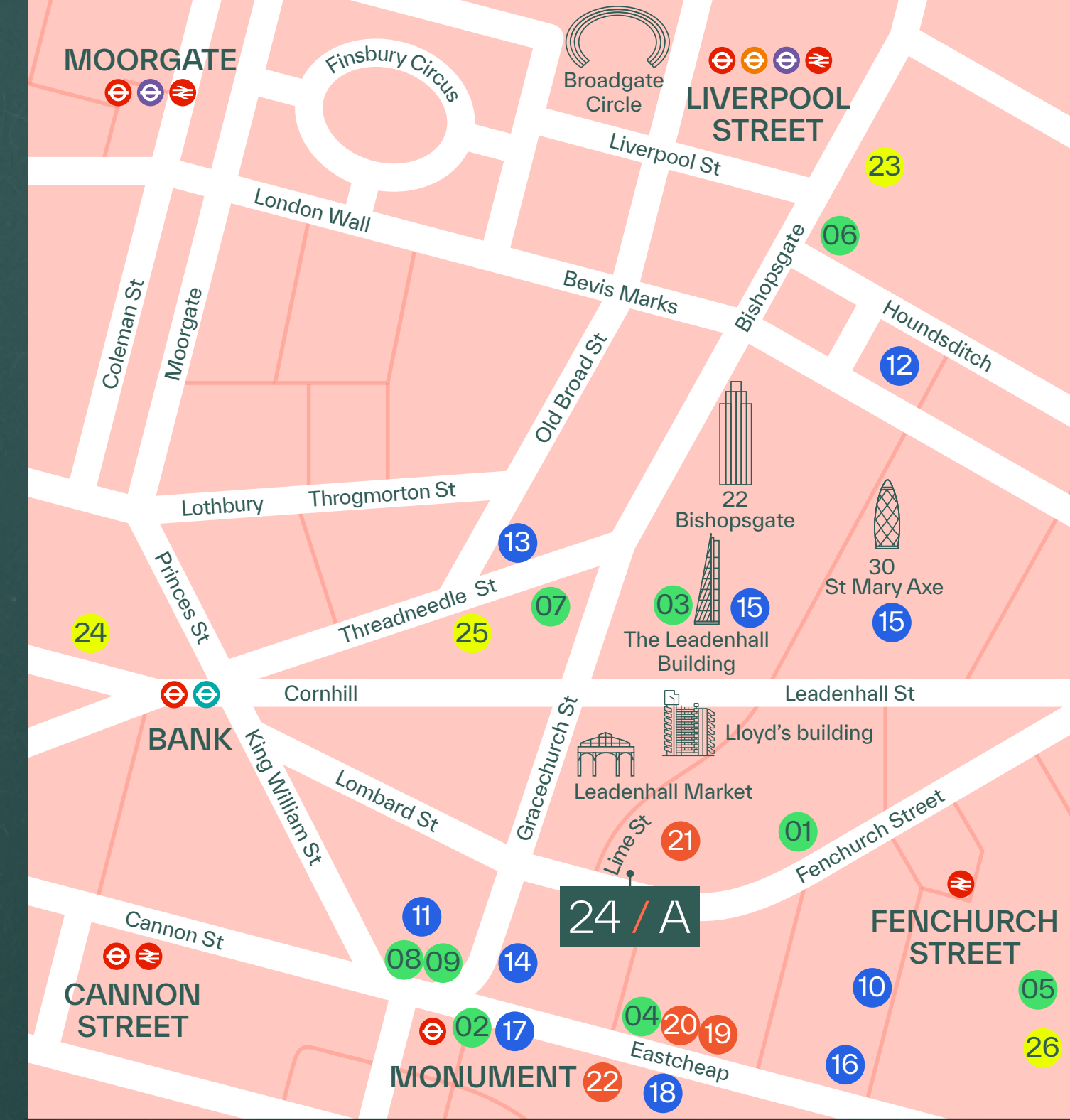
A diverse mix of bars, restaurants, cafés, leisure and retail amenities on the doorstep including Leadenhall Market and The Royal Exchange.

Underground and mainline rail stations are also within easy reach, Bank, Monument and Fenchurch Street stations all being within a short walk of the building.



LOCAL AMENITIES

- Restaurants
 - 01 14 Hills
 - 02 MBER
 - 03 Bob Bob City
 - 04 Blacklock
 - 05 Keepers Kitchen
 - 06 Duck & Waffle
 - 07 The Mercer
 - 08 The Wolseley
 - 09 Wagtail
- Bars & Cafés
 - 10 Vagabond
 - 11 Swingers
 - 12 BrewDog
 - 13 London Cocktail
 - 14 Eastcheap Records
 - 15 Black Sheep Coffee
 - 16 Joe & The Juice
 - 17 Curators Coffee
 - 18 Blank Street Coffee
- Fitness
 - 19 Third Space City
 - 20 Pure Gym
 - 21 1Rebel
 - 22 Virgin Active
- Hotels
 - 23 Pan Pacific
 - 24 The Ned
 - 25 Threadneedles
 - 26 Four Seasons



KEY TRAVEL TIMES

Walk times taken from building in minutes.

DESTINATION	SERVICES	LINES	WALK TIME
Fenchurch Street	🚶		2 mins
Monument	🚶	●●	2 mins
Bank	🚶🚶	●●●●	4 mins
Cannon Street	🚶🚶	●●	5 mins
Tower Hill	🚶🚶	●●	7 mins
Liverpool Street	🚶🚶🚶🚶	●●●●	8 mins

Source: TfL



FURTHER INFORMATION

Terms
Upon application.

Viewings
Strictly through the joint sole letting agents.

KAUFFMANS

Jeremy Prosser
E: jeremy@kauffmans.co.uk
M: 07931 593 163

Anne Housden
E: anne@kauffmans.co.uk
M: 07775 874 480

CROSSLAND OTTER HUNT

Richard Lockhart
E: richard@coh.eu
M: 07780 661 096

Charlotte Steele
E: charlotte@coh.eu
M: 07503 625 481

Misrepresentations Act 1967 - Whist all the information in this brochure is believed to be correct, neither the agent nor the client guarantee its accuracy nor is it intended to form any part of any contract. All areas quoted are approximate. May 2024.

Designed and produced by Cre8te - 020 3468 5760 - cre8te.london