

Carlyle House, 235-237 Vauxhall Bridge Road, London, SW1V 1EJ

Fully Fitted Floors To Let in Victoria

- Air conditioned
- Fully fitted
- Passenger lift
- Shower
- Openable windows
- Communal roof terrace
- Perimeter trunking
- IT

Carlyle House

235-237 Vauxhall Bridge Road, London, SW1V 1EJ

CROSSLAND
OTTER HUNT



Summary

Available Size	368 to 1,878 sq ft / 34.19 to 174.47 sq m
Rent	Inclusive including rates & service charge
EPC	Upon enquiry

Description

The available accommodation comprises the entire ground, first, and third floors of the building. The floors are all fully fitted, providing good quality, air-conditioned accommodation, and all benefit from an abundance of natural light. There is a large communal roof terrace.

Location

Carlyle House has excellent transport facilities including the Mainline station and Underground Stations (Victoria Line, Circle & District line). Numerous bus routes are located on Vauxhall Bridge Road, providing transport across London.

Accommodation

Name	sq ft	sq m	Availability
3rd - 14 desks	616	57.23	Available
1st - 20 desks	816	75.81	Available
Lower Ground - 10 desks	919	85.38	Available
Total	2,351	218.42	

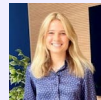
Terms

Available on a new lease direct from the freeholder for a term until 7th March 2027.



Nick Sinclair

02073992733 | 07970511730
nick@coh.eu



Charlotte Steele

020 7408 1114 | 07503625481
charlotte@coh.eu

Grace Phillips (Tuckerman)

07561852667

Guy Bowring (Tuckerman)

020 7222 5511 | 07831 185 728