



Princes House, 38 Jermyn Street, London, SW1Y 6DN

Impressive fully fitted office suite in the heart of St James's

- Impressive reception
- LED lighting
- Pre-installed fibre
- Air conditioning
- Showers
- Fully fitted

Princes House

38 Jermyn Street, London, SW1Y 6DN

CROSSLAND
OTTER HUNT



Summary

Available Size	2,491 sq ft / 231.42 sq m
Rent	£83.36 per sq ft
Service Charge	£23.75 per sq ft
EPC	Upon Enquiry

Description

Princes House is an attractive office building in the heart of St James's. The mezzanine floor is fully fitted with one large boardroom, two meeting rooms and a kitchenette. The building has an impressive reception, bike storage and showers.

Location

It is situated close to the junction with Duke Street St James's. Princes House benefits from excellent transport. Green Park (Jubilee, Victoria, and Piccadilly lines) is a short walk from the property.

Accommodation

The accommodation comprises the following areas:

Name	sq ft	sq m	Rent (sq ft)	Rates Payable (sq ft)	Service Charge (sq ft)	Total month
Mezzanine	2,491	231.42	£83.36	£37.37	£23.75	£29,991.64
Total	2,491	231.42	£83.36	£37.37	£23.75	£29,991.64

Terms

Available by way of sublease or assignment until 25th July 2025



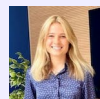
Richard Lockhart

020 7399 2735 | 07780661096
richard@coh.eu



Jessica Flather

020 7399 2743 | 07787296201
jessica@coh.eu



Charlotte Steele

020 7408 1114 | 07503625481
charlotte@coh.eu

Simon Tann (LEVY)

0207 747 0141 | 07748 180 198

Calum Holden (LEVY)

07508610454