



## 19 Wigmore Street, London, W1U 1PH

Economical, 650 sq ft office suite on Wigmore Street with comfort cooling and LED lighting

- Economical
- LED lighting
- Large windows and high ceilings
- Comfort cooling
- Plaster ceiling/wooden floor
- Demised WC

# 19 Wigmore Street

London, W1U 1PH

CROSSLAND  
OTTER HUNT



## Summary

Available Size	641 sq ft / 59.55 sq m
EPC	Upon Enquiry

## Description

The office measures 641 sq ft and benefits from AC & LED lights. There are generous floor to ceiling heights and large windows.

## Location

Located on the south side of Wigmore Street, close to the junction with Wimpole Street and a short walk from Cavendish Square.

## Accommodation

The accommodation comprises of the following

Name	sq ft	sq m	Rent (sq ft)	Rates Payable (sq ft)	Service Charge (sq ft)	Total month	Availability
1st	641	59.55	£52.50	£28.56	£5.12	£4,603.45	Available
<b>Total</b>	<b>641</b>	<b>59.55</b>	<b>£52.50</b>	<b>£28.56</b>	<b>£5.12</b>	<b>£4,603.45</b>	

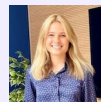
## Specification

Stunning high ceilings with large windows front and rear  
Comfort cooling  
LED lighting



**Phil Frenay**

02073992742 | 07818566174  
phil@coh.eu



**Charlotte Steele**

020 7408 1114 | 07503625481  
charlotte@coh.eu



**Jessica Flather**

020 7399 2743 | 07787296201  
jessica@coh.eu