



15-17 Grosvenor Gardens, London, SW14 8BY

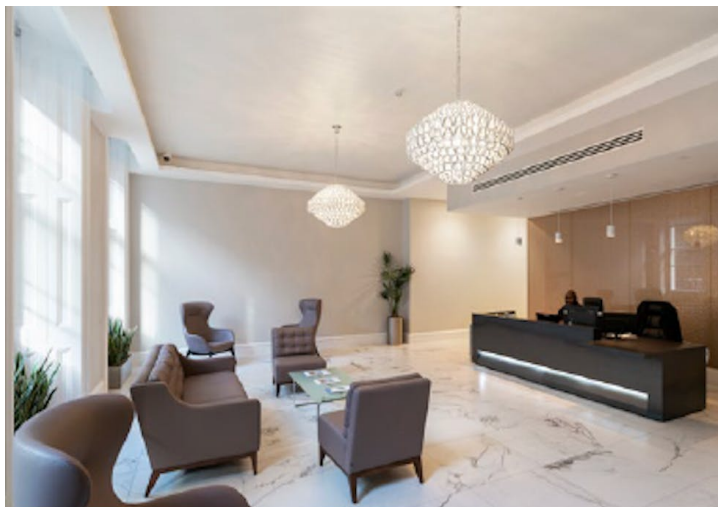
Refurbished, Cooled Offices To Let close to Victoria Station with
Impressive Manned Reception
865 - 8,193 sq ft

- Refurbished manned reception
- LED Lighting
- Raised Floors
- Grade II Listed
- Passenger Lift
- Comfort Cooled
- Close to Victoria Station

15-17 Grosvenor Gardens

London, SW14 8BY

CROSSLAND
OTTER HUNT



Summary

Available Size	865 to 8,139 sq ft / 80.36 to 756.14 sq m
Rent	£54.50 - £72.50 per sq ft
EPC	Upon Enquiry

Description

The large & welcoming, newly refurbished, manned reception leads to 2 lifts.

The offices benefit from excellent natural light, raised floors, suspended ceilings and comfort cooling.

Location

This prominent building is located close to the junction with Beeston Place, very close to all the amenities that surround Victoria Rail terminals.

Accommodation

The accommodation comprises the following areas:

Name	sq ft	Rent (sq ft)	Rates Payable (sq ft)	Service Charge (sq ft)	Total month	Availability
3rd - (15)	865	£65	£31.67	£12	£7,833.30	Available
2nd - (15)	977	£72.50	£28.04	£12	£9,162.63	Available
1st - (15)	1,068	£72.50	£25.62	£12	£9,800.68	Available
Ground - (15)	1,809	£54.50	£15.15	£12	£12,308.74	Available
Lower Ground - (15 + 17)	3,474	-	£21.44	£12	£9,680.88	Available
Total	8,193	£66.13	£24.38	£12	£48,786.23	



Nick Sinclair

02073992733 | 07970511730

nick@coh.eu



Phil Frenay

02073992742 | 07818566174

phil@coh.eu

Oscar Holmes (Tuckerman)

020 3328 5383 | 07921 452 727

Guy Bowring (Tuckerman)

020 7222 5511 | 07831 185 728