



## 60 Moorgate, London, EC2R 6EJ

Impressive redeveloped building in the heart of the City

1,829 - 17,155 sq ft Available to Let

- VRF air conditioning
- Cycle storage
- Terrace on 7th floor
- Typical floor to ceiling heights of 2.75m
- 2 x 13 person passenger lifts
- BREEAM – Excellent
- Full access raised floors
- Showers, lockers & changing facilities

# 60 Moorgate

London, EC2R 6EJ

CROSSLAND  
OTTER HUNT



## Summary

Available Size	1,829 to 21,050 sq ft / 169.92 to 1,955.61 sq m
Rent	£69.50 on CAT A floors £75 on CAT A +
Service Charge	£11.29 per sq ft
EPC	Upon enquiry

## Description

60 Moorgate is an impressive City building which has recently undergone a comprehensive refurbishment behind a retained façade. The building provides circa 28,000 sq ft of new office and retail space. This office floors provide 4,000 sq ft of column free Grade A workspace. 60 Moorgate offers occupiers a roof terrace on the top floor and bike storage and showers in the basement.

## Location

Situated in a prominent position on the junction of London Wall and Moorgate, 60 Moorgate provides a prestigious business address and close access to the capital's transport network with the new Moorgate entrance of the Elizabeth line just 150 yards away.

## Accommodation

Name	sq ft	sq m	Rent	Rates Payable (sq ft)	Service Charge (sq ft)	Total /sq ft
1st	3,851	357.77	£69.50 /sq ft	£25	£11.29	£105.79
4th	3,913	363.53	£69.50 /sq ft	£25	£11.29	£105.79
5th	3,887	361.11	£69.50 /sq ft	£25	£11.29	£105.79
6th	3,675	341.42	£69.50 /sq ft	£25	£11.29	£105.79
7th	1,829	169.92	£69.50 /sq ft	£25	£11.29	£105.79
<b>Total</b>	<b>17,155</b>	<b>1,593.75</b>		<b>£25</b>	<b>£11.29</b>	<b>£105.79</b>

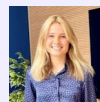
## Terms

A new lease is available direct from the landlord



### Richard Lockhart

020 7399 2735 | 07780661096  
richard@coh.eu



### Charlotte Steele

020 7408 1114 | 07503625481  
charlotte@coh.eu

### Alice Logan (Allsop)

020 7588 4433 | 07720 070417

### Patrick Sayer (Deleted) (Allsop)

020 7588 4433 | 07741 199039