



SIXTY
MOORGATE





SIXTY MOORGATE, EC2 HAS BEEN COMPREHENSIVELY REDEVELOPED BEHIND A RETAINED FAÇADE.

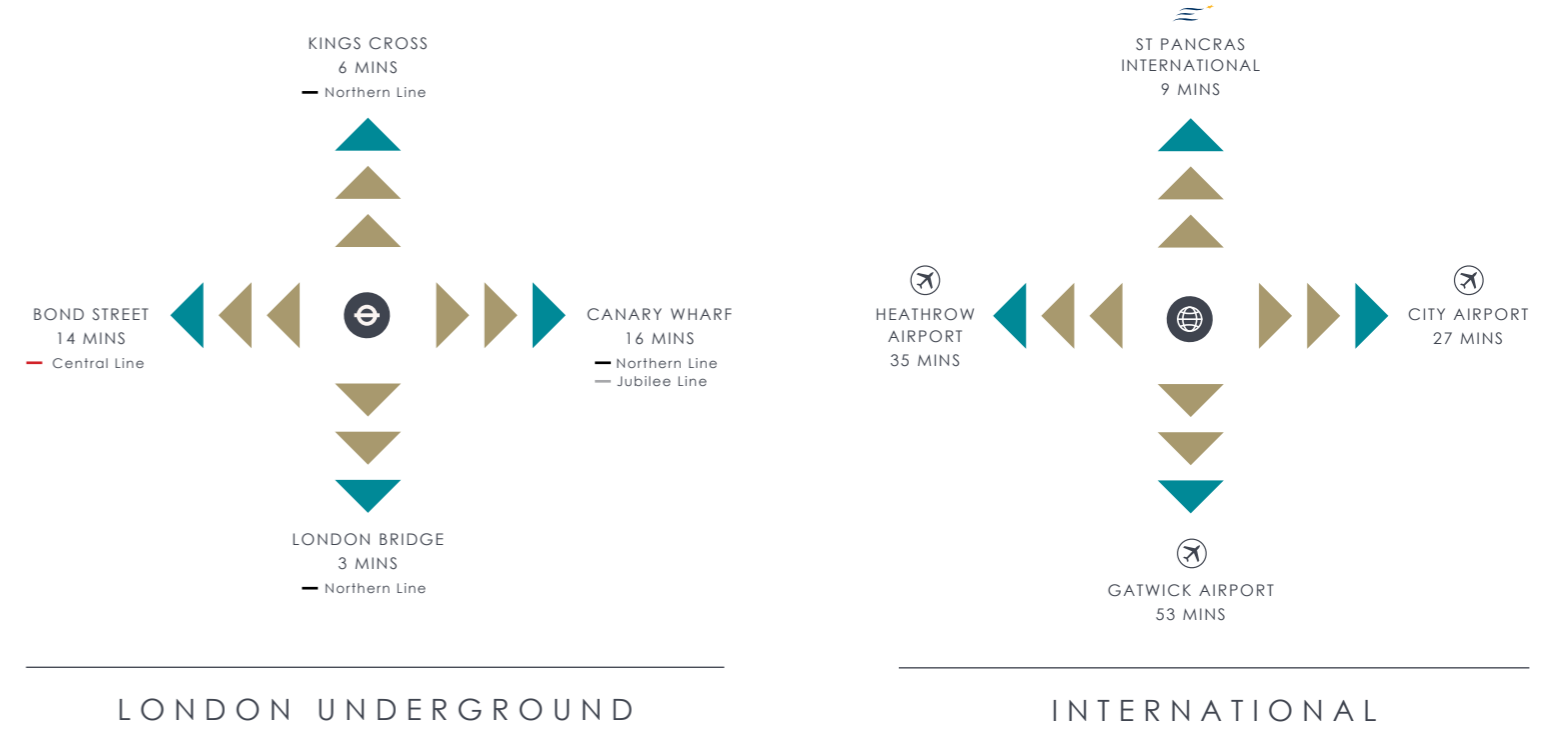
Situated in a prominent position on the junction of London Wall and Moorgate, Sixty Moorgate provides a prestigious business address and close access to the capital's transport network with the new Moorgate entrance of the Elizabeth line just 150 yards away.

This new office building will provide typical floors of just under 4,000 sq ft of column free Grade A workspace. The scheme has been highly specified with building amenities modern occupiers seek, with a roof terrace on the top floor and bike storage and showers in the basement.

25,000 SQ FT
OF NEW OFFICE
SPACE



CONNECTIVITY FOR MOORGATE IS SET TO BE ENHANCED CONSIDERABLY FOLLOWING THE OPENING OF CROSSRAIL.



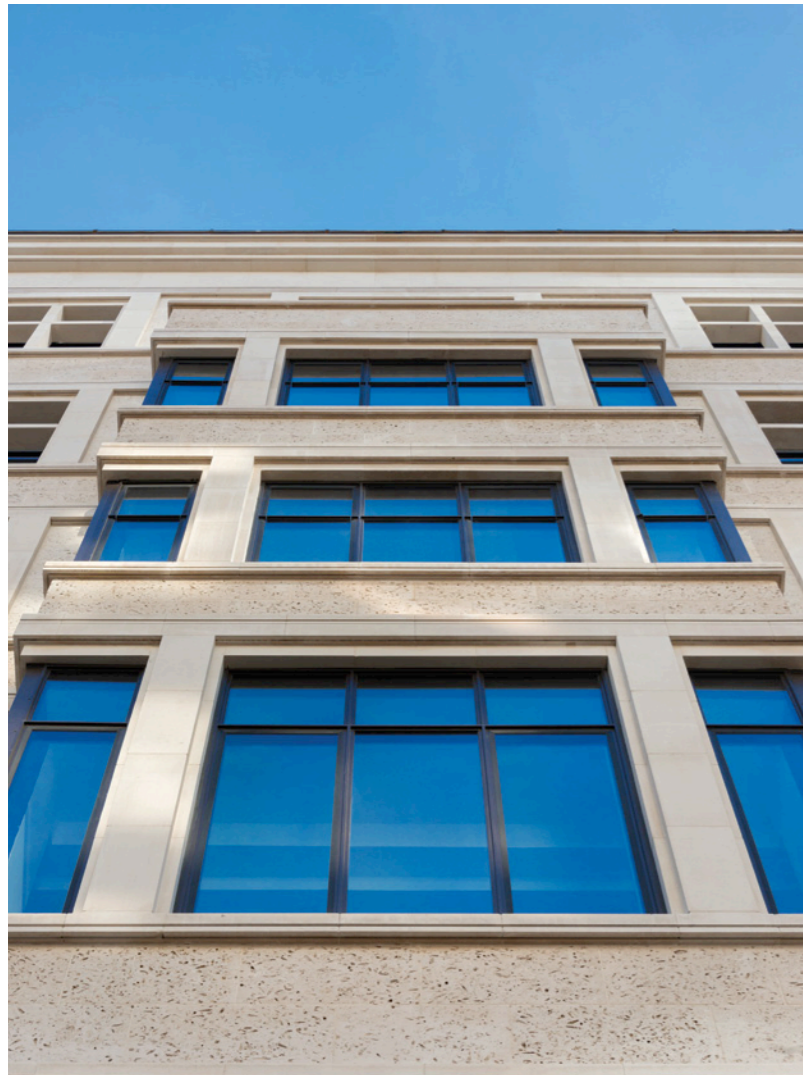
Map showing Moorgate area with streets: BARBICAN, MOORGATE, LONDON WALL, SIXTY MOORGATE, LIVERPOOL STREET, GRESHAM STREET, CHEAPSIDE, POULTRY, PRINCE STREET, THE BANK OF ENGLAND, THE ROYAL EXCHANGE, CORNHILL, LEADENHALL STREET, LEADENHALL MARKET, BISHOPS GATE, OLD BROAD STREET, THREADNEEDLE STREET, FINSBURY CIRCUS, BROADGATE CIRCLE.

- RESTAURANTS**
- 1 Lombard Street
 - 2 Angler
 - 3 Brasserie Blanc
 - 4 Coya
 - 5 Enoteca da Luca
 - 6 Goodman City
 - 7 Harry's Bar
 - 8 Hawksmoor Guildhall
 - 9 Kitty Hawk
 - 10 Le Relais de Venise
 - 11 M
 - 12 Mint Leaf
 - 13 Natural Kitchen
 - 14 Off the Wall
 - 15 Pizza Express
 - 16 Sauterelle
 - 17 The Mercer
- BARS / CAFÉS**
- 1 Chipotle
 - 2 Coco di Mama
 - 3 Davy's
 - 4 El Vino
 - 5 Euphorium Bakery
 - 6 Fox's Wine Bar
 - 7 Notes
 - 8 Panino Giusto
 - 9 Ravello
 - 10 Royal Exchange Grind
 - 11 Taylor St Baristas
 - 12 The Anthologist
 - 13 The Gable
 - 14 The Globe
 - 15 The Tokenhouse
 - 16 Vertigo 42
- HEALTH / LEISURE**
- 1 City Golf and Health Clubs
 - 2 Eight Members Club
 - 3 Fitness First
 - 4 Gym Box
 - 5 Pure Gym
 - 6 Matt Roberts City
- RETAIL**
- 1 Barbican
 - 2 Broadgate Circle
 - 3 The Royal Exchange
- HOTELS**
- 1 Apex London
 - 2 South Place Hotel
 - 3 The Ned
 - 4 Threadneedles
- BANKS**
- 1 Bank of China
 - 2 Bank of England
 - 3 Deutsche Bank
 - 4 ING
 - 5 Schroders
 - 6 Standard Chartered
- FINANCIAL SERVICES**
- 7 BlackRock
 - 8 Citadel
 - 9 CLSA
 - 10 Legal & General
 - 11 Pictet
 - 12 Portigon AG
 - 13 Prudential Regulation Authority
 - 14 Rathbones
- PROFESSIONAL SERVICES**
- 15 Alvarez & Marsal
 - 16 Baker Bofts
 - 17 Fried Frank
 - 18 Latham & Watkins
 - 19 Smith & Williamson
 - 20 Stephenson Harwood
 - 21 White & Case





SITUATED
IN THE HEART
OF THE CITY, SIXTY
MOORGATE HAS
FIRST CLASS AMENITIES
ON ITS DOORSTEP.





LONDON WALL MOORGATE

	SQ M	SQ FT
SEVENTH FLOOR*	170	1,829
SIXTH FLOOR*	341	3,675
FIFTH FLOOR	361	3,887
FOURTH FLOOR	364	3,913
THIRD FLOOR	362	3,895
SECOND FLOOR	360	3,876
FIRST FLOOR	358	3,851
TOTAL	2,316	24,926

* Sixth & Seventh floors are to be let together

FIRST CLASS FACILITIES



VRF
AIR CONDITIONING



FULL ACCESS
RAISED FLOORS



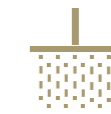
2 X 13 PERSON
PASSENGER LIFTS



TYPICAL FLOOR TO CEILING
HEIGHTS OF 2.75M



28 X
BICYCLE RACKS



SHOWERS, LOCKERS &
CHANGING FACILITIES



BREEAM
EXCELLENT



WIREScore
GOLD



COLUMN-FREE
FLOOR PLATES



TYPICAL FLOORS OF JUST
UNDER 4,000 SQ FT OF
COLUMN FREE GRADE A
WORKSPACE.



BLANK CANVAS

Control every aspect of your fit out with traditional and flexible leases available.

CHOOSE A SPACE THAT WORKS FOR YOU



The third floor has been completed with a full Category B fitout to include; reception / waiting area, 2 meeting rooms, soft seating area, a fully equipped tea point and breakout area, structured cabling and open plan desking.



PLUG AND PLAY

Hassle free and fast, with no cap-ex on fit out.



CONTACT



James Proctor

D: +44 (0)20 7588 4433
M: +44 (0)7779 789957
E: james.proctor@allsop.co.uk

Richard Lockhart

D: +44 (0)20 7408 1114
M: +44 (0)7780 661096
E: richard@coh.eu

Steve Lydon

D: +44 (0)20 7588 4433
M: +44 (0)7879 841840
E: steve.lydon@allsop.co.uk

Charlotte Steele

D: +44 (0)20 7408 1114
M: +44 (0)7503 625481
E: charlotte@coh.eu

MISREPRESENTATION

Allsop and Crossland Otter Hunt gives notice that these particulars are set out as a general outline only for the guidance of intending Purchasers or Lessees and do not constitute any part of an offer or contract. Details are given without responsibility and any intending Purchasers, Lessees or Third Party should not rely on them as statements or representations of fact, but must satisfy themselves by inspection or otherwise as to the correctness of each of them. No person employed or engaged by Allsop or Crossland Otter Hunt has any authority to make any representation or warranty whatsoever in relation to this property. November 2022. Designed and produced by Cooper Rose 020 3440 5160