



13-14 Buckingham Street, London, WC2N 6DF

Beautiful period offices To Let

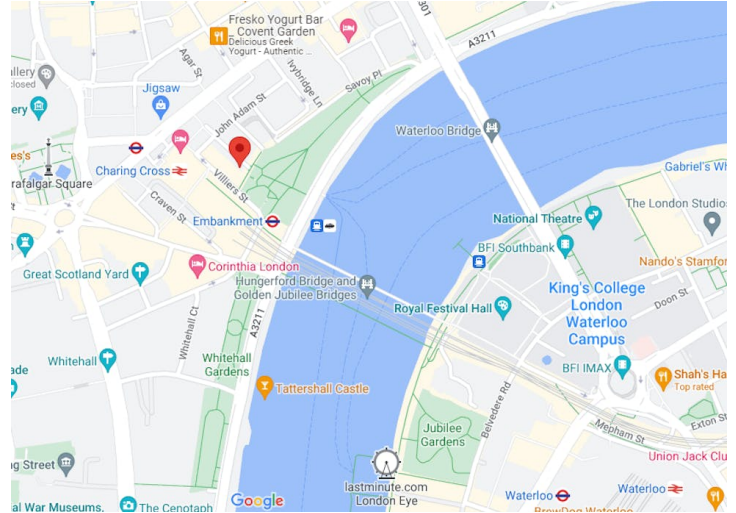
710 - 4,481 sq ft

- Beautiful corner building overlooking the Thames
- Large windows
- Pendant LED lighting
- Entry phone system
- Comfort cooling
- Period features
- CAT VI cabling
- Refurbished WCs

13-14 Buckingham Street

London, WC2N 6DF

CROSSLAND
OTTER HUNT



Summary

| | |
|----------------|---|
| Available Size | 710 to 4,481 sq ft / 65.96 to 416.30 sq m |
| Rent | £42.50 - £55 per sq ft |
| Service Charge | £17.50 per sq ft Fixed + RPI |
| EPC | C |

Description

This multi-tenanted building is prominently located overlooking Victoria Embankment Gardens and The Thames. The building boasts high ceilings and an abundance of period features

Location

This prominent period building is located on the west side of Buckingham Street, just south of The Strand and overlooking Victoria Embankment Gardens. Charing Cross station (National Rail, Northern and Bakerloo lines) and Embankment station (Northern, Bakerloo and District and Circle lines) are located close by.

Accommodation

The accommodation comprises of the following

| Name | sq ft | Rent (sq ft) | Rates Payable (sq ft) | Service Charge (sq ft) | Total month | Total year |
|---------------|-------|--------------|-----------------------|------------------------|-------------|-------------|
| 4th - 4.2 | 2,137 | £42.50 | £19.54 | £17.50 | £14,164.75 | £169,976.98 |
| 4th - 4.1 | 780 | £42.50 | £23.19 | £17.50 | £5,407.35 | £64,888.20 |
| Ground - G.1 | 854 | £49.50 | £20.01 | £17.50 | £6,192.21 | £74,306.54 |
| Ground - G3&4 | 710 | £55 | £23.24 | £17.50 | £5,664.62 | £67,975.40 |

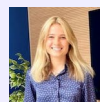
Terms

The accommodation is available by way of new, flexible leases



Phil Frenay

02073992742 | 07818566174
phil@coh.eu



Charlotte Steele

020 7408 1114 | 07503625481
charlotte@coh.eu



Jessica Flather

020 7399 2743 | 07787296201
jessica@coh.eu