



154 Brompton Road, London, SW3 1HX

Knightsbridge Office Suites To Let

1st (952 sq ft) & 2nd floor (848 sq ft)

- Large windows
- Passenger lift
- Demised WCs
- Excellent natural light
- Comfort cooling
- Kitchenette

154 Brompton Road

London, SW3 1HX

CROSSLAND
OTTER HUNT



Summary

| | |
|----------------|---|
| Available Size | 848 to 1,800 sq ft / 78.78 to 167.23 sq m |
| Rent | £62.50 psf (1st) £67.50 (2nd) |
| Service Charge | £15.29 per annum Estimated |
| EPC | Upon Enquiry |

Description

The available accommodation is located on the 1st (952 sq ft) and 2nd floors (848 sq ft). There is a lift from the first floor. The offices benefit from a kitchenette, excellent natural light and demised WCs. The second floor has recently been redecorated to provide modern, bright office accommodation.

Location

The property is located on the north side of Brompton Road. The building benefits from excellent transport links. It is a short walk to Knightsbridge (Piccadilly) and South Kensington (District and Circle) underground stations providing access to the City, West End and Heathrow Airport.

Accommodation

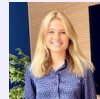
The accommodation comprises the following areas:

| Name | sq ft | sq m | Rent (sq ft) | Rates Payable (sq ft) | Service Charge (sq ft) | Total year |
|------|-------|-------|--------------|-----------------------|------------------------|------------|
| 2nd | 848 | 78.78 | £62.50 | £25.30 | £15.29 | £87,420.32 |
| 1st | 952 | 88.44 | £67.50 | £19.13 | £15.29 | £97,027.84 |



Richard Lockhart

020 7399 2735 | 07780661096
richard@coh.eu



Charlotte Steele

020 7408 1114 | 07503625481
charlotte@coh.eu