



75

FARRINGTON ROAD EC1



Exceptional corner building, comprehensively refurbished to a Buckley Gray Yeoman design.

Providing 24,632 sq ft of Grade A, flexible and contemporary office accommodation situated a 2 minute walk from Farringdon Station.



The existing building has been taken back to the frame and lovingly refurbished incorporating full height glazing with anodised bronze surrounds. A beautiful 7th floor & new terrace has also been added to the top of the building. All floors provide office accommodation of the highest quality.

Stunning terraces have been added to the 6th and 7th floors providing unparalleled views eastwards towards St Paul's and The City.

-----





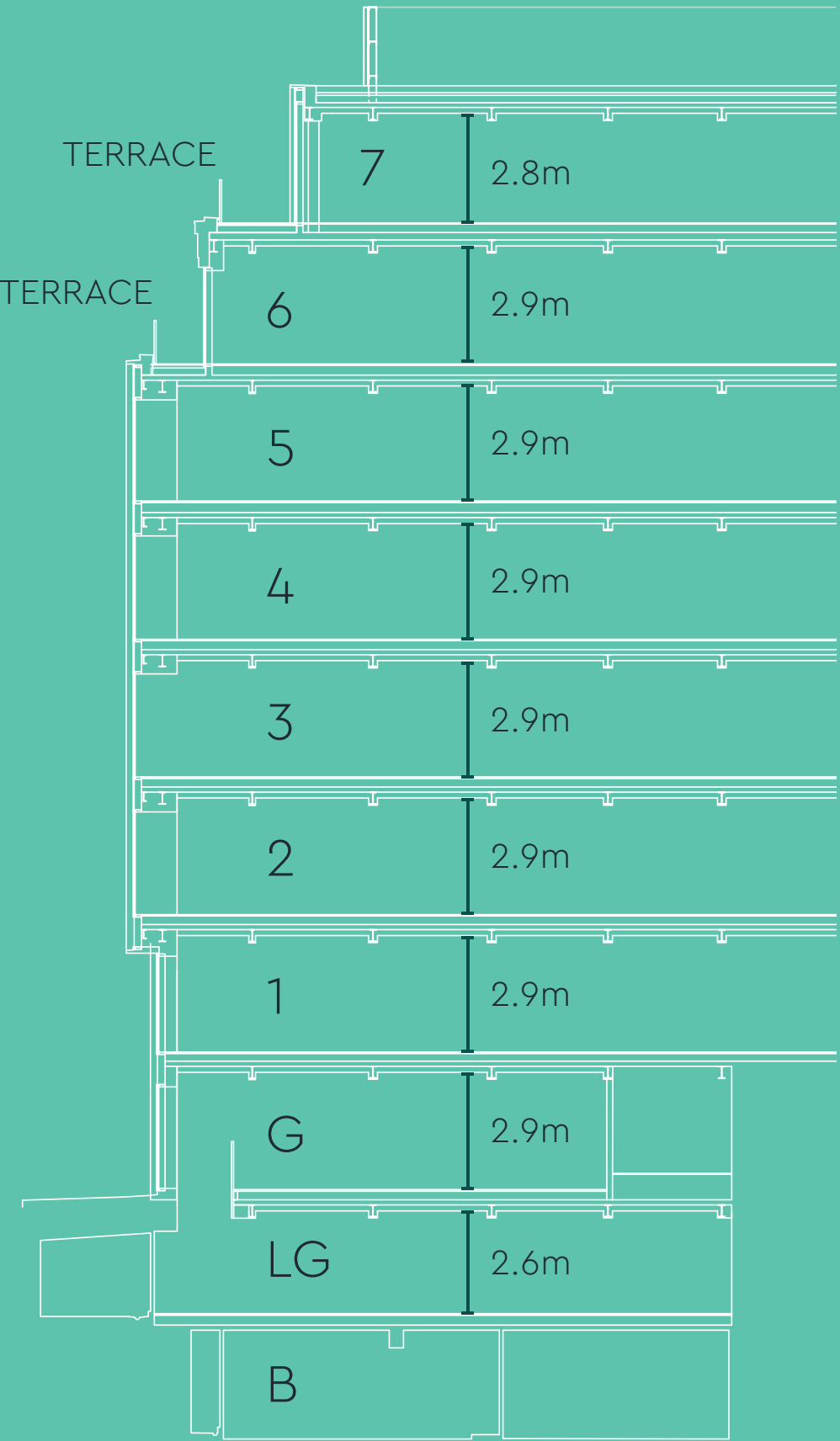


A dedicated ground floor entrance will allow the lower ground and ground floors to be taken as a self contained office/showroom.



# ACCOMMODATION SCHEDULE



Floor	SQ FT	SQ M
7	1,728	161
6 LET	2,590	241
5	3,195	297
4	3,208	298
3	3,204	298
2	3,202	298
1	3,021	281
G	1,582	147
LG	2,902	270
TOTAL	24,632	2,288



N.B The above are representative finished floor to ceiling heights



Designed to achieve a BREEAM "very good" rating, this building boasts new cycle storage, shower and changing facilities plus a drying room.

-  **40** Bike Spaces
-  **3** Showers
-  **40** Lockers





## THE LOCAL AREA

### ○ BARS/RESTAURANTS

01. TRENTS
02. THE FAMOUS ITALIAN WOP
03. DADDY DONKEY
04. KIN
05. CRAFT BEER CO
06. POLPO
07. PURFOCK COFFEE
08. BLEEDING HEART
09. IBERICA
10. BREWDOG
11. CLERKENWELL & SOCIAL
12. SMITHS OF SMITHFIELD
13. ST JOHN RESTAURANT
14. HIX
15. MODERN PANTRY
16. EXMOUTH ARMS
17. COIN LAUNDRY BAR

### ● OCCUPIERS

26. ADIDAS
27. LINKEDIN
28. STARCOM
29. ENNISMORE
30. UNILEVER
31. DELOITTE DIGITAL
32. SAINBURY'S
33. GOLDMAN SACHS
34. AMAZON
35. SAATCHI & SAATCHI
36. GREY LONDON
37. 38 DEGREES
38. KARMARAMA
39. KURT GEIGER
40. ALEXANDER McQUEEN
41. AGENT PROVOCATEUR
42. AKQA

### ● RETAIL/LEISURE

18. BOUNCE
19. BARBER STREISAND
20. PUREGYM
21. DRUNKEN BUTLER
22. MOB45
23. TEN HEALTH & FITNESS
24. THE QUALITY CHOP HOUSE SHOP
25. FOREST





A photograph of the Clerkenwell &amp; Social bar in London. The bar has a dark facade with large windows and a striped awning. People are seated at outdoor tables in the foreground, and a chalkboard sign advertises '2-11 COCKTAILS 5-11 (incl. pop)' and 'ALL DAY DRINKING'.

WOP FOOD

A red, stylized logo for 'Wop' with the text 'THE FAMOUS ITALIAN' above it, set against a dark, textured background. The logo is shaped like a speech bubble or a drop with a tail, and the word 'Wop' is written in a large, cursive, white font with a red outline. The background of the logo is red with a subtle, darker red pattern. The text 'THE FAMOUS ITALIAN' is in a smaller, white, sans-serif font. The logo is mounted on a dark, textured surface, possibly a wall or a door, with a dark handle visible on the right side.

A photograph of the Smiths of Smithfield building, a three-story brick structure with arched windows and a red awning. The building features a mix of red and light-colored bricks, with large arched windows on the upper floors. A red awning is visible on the ground floor. The building is located in an urban setting with other buildings visible in the background.

A photograph of the exterior of The Bleeding Heart Tavern. The building is painted a vibrant red. The name 'The BLEEDING HEART Tavern' is written in gold lettering across the front facade, with 'The' in a script font and 'BLEEDING HEART Tavern' in a bold, sans-serif font. The building features large, multi-paned windows and several ornate, black-framed lanterns mounted on the facade. The entrance area is visible through the large windows, showing a dark interior with some furniture. To the right, a white building with a sign for 'WE BUILT' is partially visible.

A wide-angle photograph of the interior of Coin Laundry Bar. The space is characterized by its industrial aesthetic, featuring dark wood plank flooring, exposed brick walls, and large multi-paned windows on the left side. In the foreground, there are several tables: a small round blue table with orange chairs and a larger rectangular white table with orange chairs. Patrons are seated at these tables, some looking towards the camera and others looking away. In the background, a long dark bar is visible, with shelves of various bottles behind it. A person is standing behind the bar. The lighting is warm and ambient, with recessed ceiling lights and light coming from the windows. A sign above the bar area reads "COIN LAUNDRY BAR".

A hand-drawn sign for 'PRUFROCK COFFEE'. The sign is white with the words 'PRUFROCK' and 'COFFEE' in blue, blocky, hand-painted letters. Below the text is a large, stylized blue splash or drop shape, suggesting a coffee spill. The sign is placed outdoors in front of a building with a window and some foliage.



# A GENTLE STROLL

**FARRINGDON**  
2 min

**CHANCERY LANE**  
7 min

**BARBICAN**  
10 min

Farringdon is served by the Circle, Hammersmith & City and Metropolitan Lines



# FROM FARRINGDON STATION



**MOORGATE**  
1 min

**LIVERPOOL STREET**  
2 mins

**KING'S CROSS  
ST PANCRAS INTL**  
FOR EUROSTAR  
4 mins



**LONDON BRIDGE**  
10 mins

**GATWICK AIRPORT**  
40 mins

**CAMBRIDGE**  
1 hr 14 mins

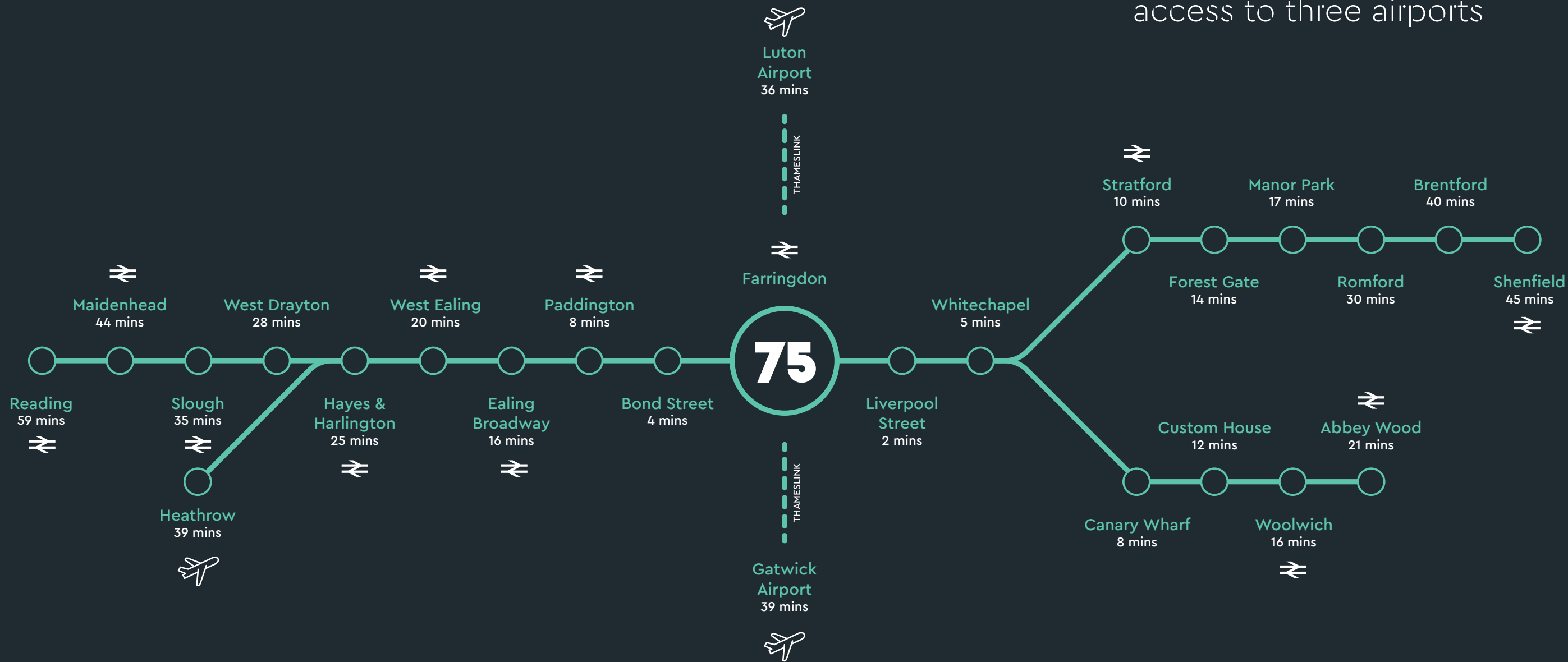


**BOND STREET**  
4 mins

**PADDINGTON**  
8 mins

**HEATHROW**  
39 mins

# CONNECT THE DOTS



Farringdon will be the only Central London station with direct access to three airports



Upon completion, the Elizabeth line will provide a new high speed train service, giving thousands of commuters quick access into and across London.





## SPECIFICATION

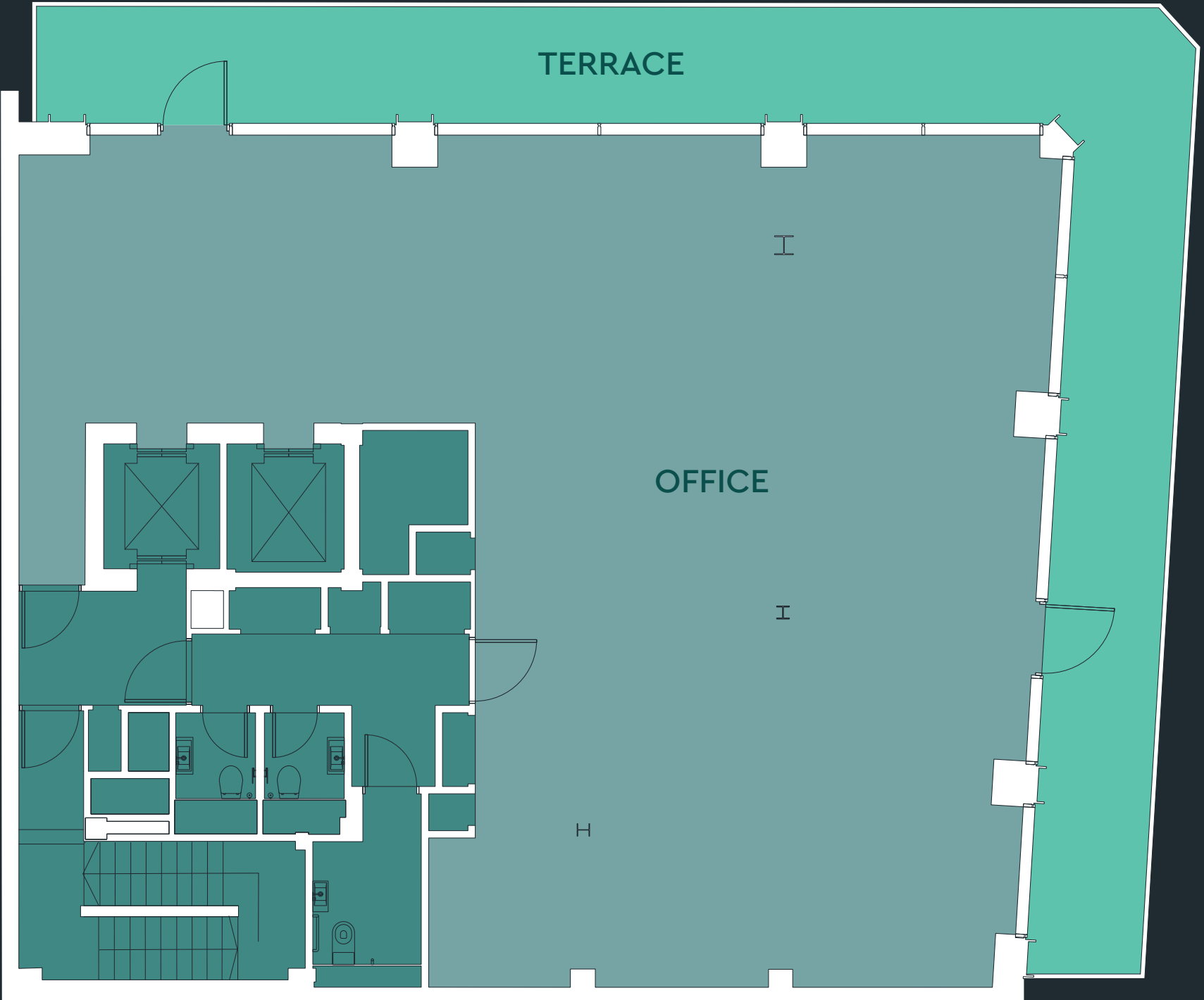
- Flexible floorplates flooded with natural light
- Exposed VRF air conditioning
- Fully accessible raised floors
- Exposed ceiling with pendant LED lighting
- Full height glazing
- 2 x passenger lifts
- Remodelled reception
- 40 Bike racks and lockers
- 3 showers
- Terraces on 6th & 7th floors
- Ceiling heights of 2.9m on typical floors
- BREEAM – Very Good





SEVENTH FLOOR

Office		Terrace
1,728	SQ FT	680 SQ FT
161	SQ M	63 SQ M



Indicative only. Not to scale.



# SIXTH FLOOR

Office		Terrace	
2,590	SQ_FT	438	SQ_FT
241	SQ_M	41	SQ_M



Indicative only. Not to scale.

# TYPICAL FLOOR 2-5

Office	
3,200	SQ_FT
297	SQ_M

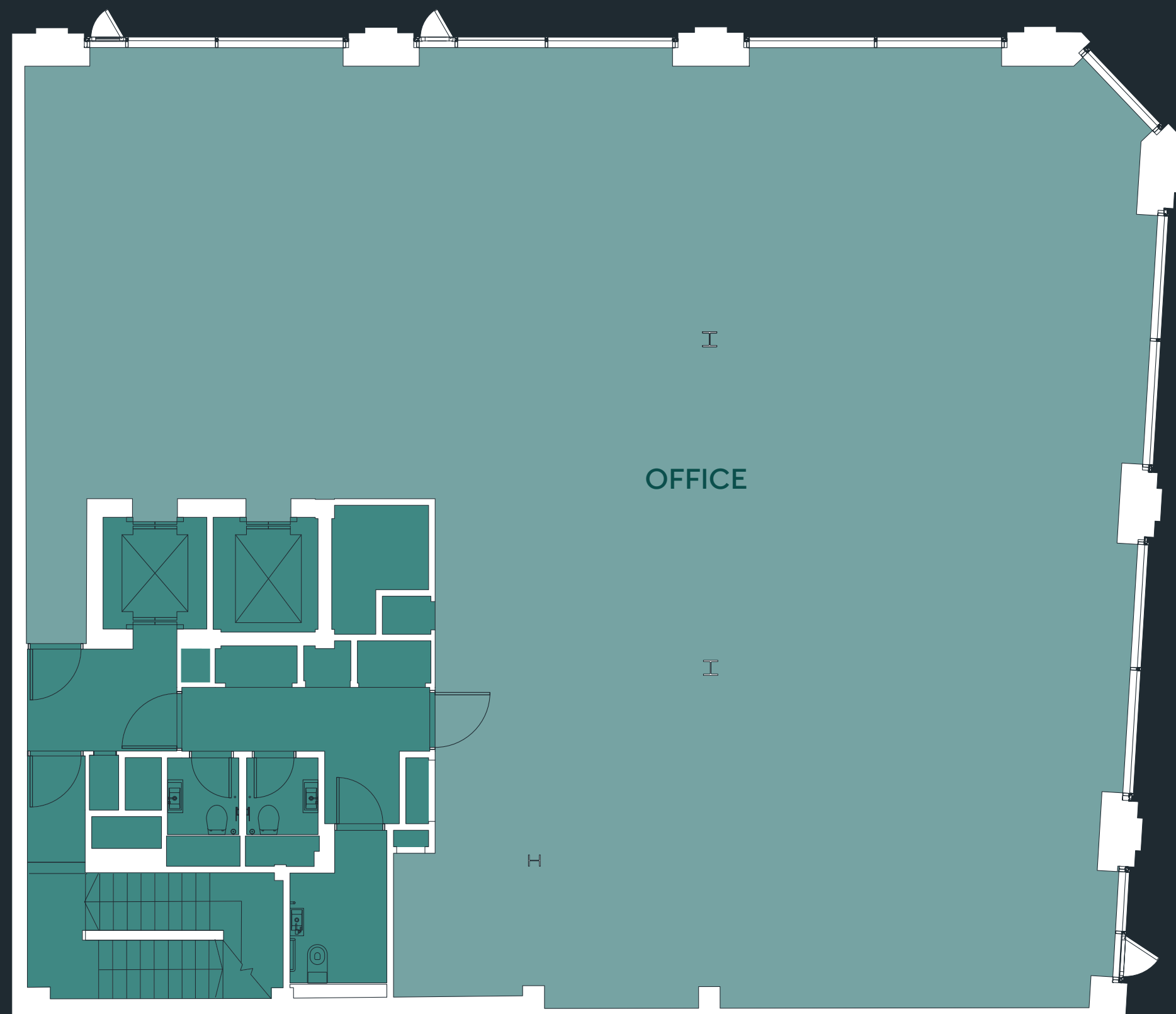


Indicative only. Not to scale.



# FIRST FLOOR

Office  
3,021 SQ.FT  
281 SQ.M



Indicative only. Not to scale.





# GROUND FLOOR

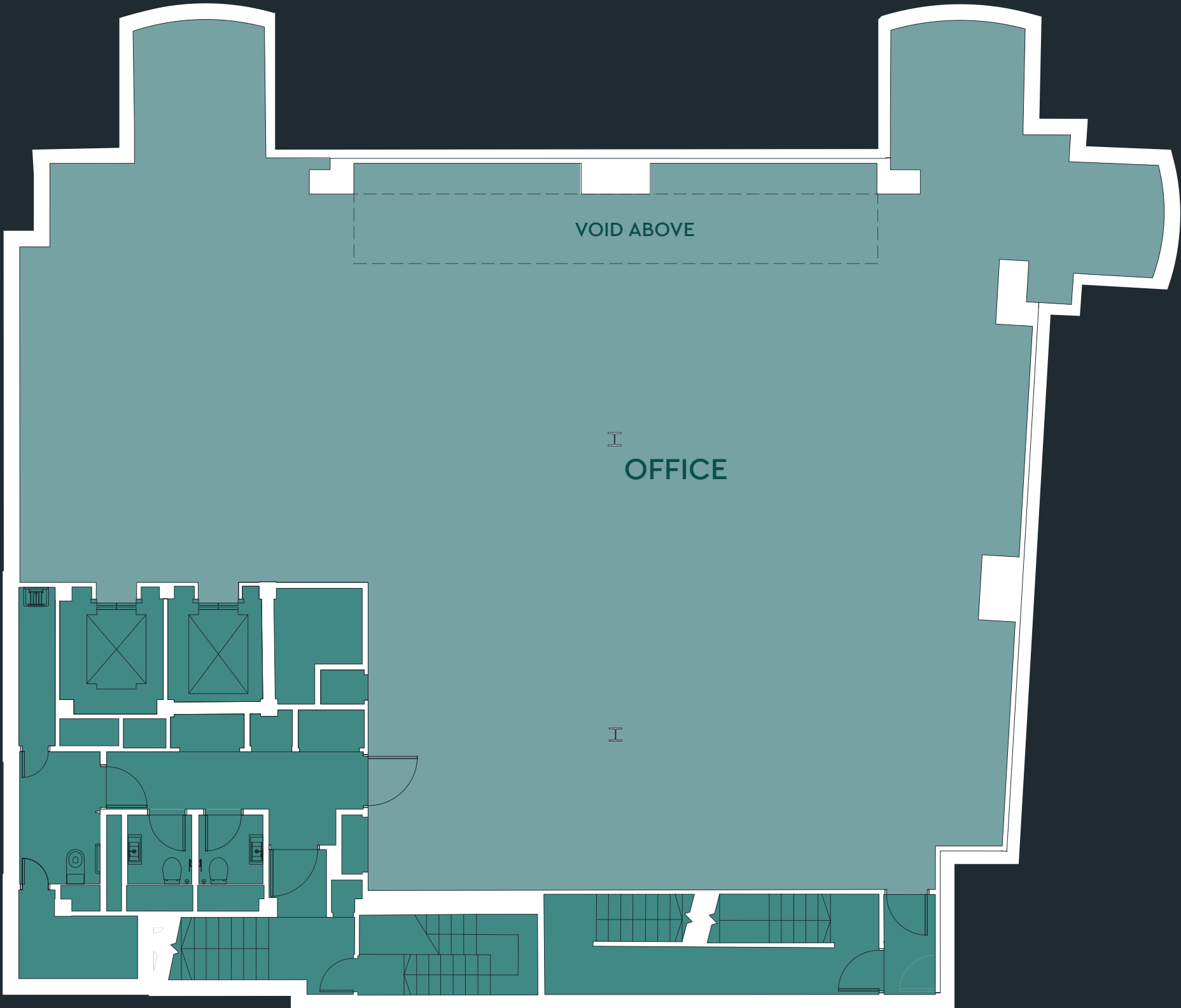
Office  
1,582 SQ.FT  
147 SQ.M



Indicative only. Not to scale.

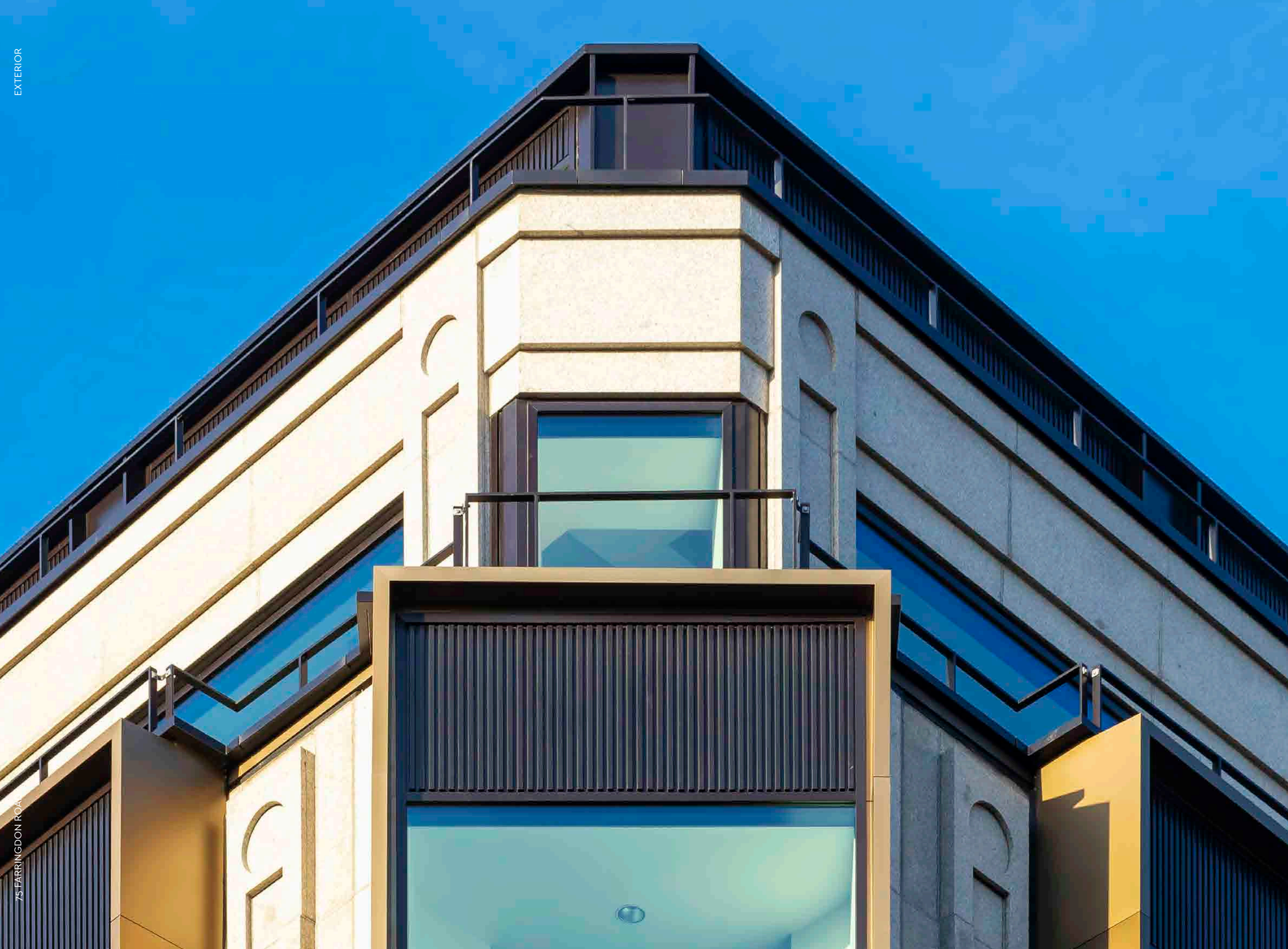
# LOWER GROUND FLOOR

Office  
2,902 SQ.FT  
270 SQ.M



Indicative only. Not to scale.





75 FARRINGTON ROAD

EXTERIOR



75 FARRINGTON ROAD

5TH FLOOR



# SPECIFICATION

## 1.0 Description of the Works

The building has been stripped back to frame and rebuilt behind full height glazing with anodized bronze surrounds to provide a high quality Grade A office building

A new 7th floor has been added which along with new private terraces on the 6th & 7th floors provide unparalleled views eastwards towards St Paul's Cathedral and the City

A dedicated ground floor corner entrance will allow the lower ground and ground floors to be taken as a self-contained unit for either office or showroom occupiers and creates a highly prominent offering

Generous new cycle storage, changing and shower facilities are located at basement level

There is a dedicated access to these facilities via an independent stair located on St Cross Street

This outline specification should be read in conjunction with the full specification document

### 1.1 Project Team

**Client:** Orchard Street Investment Management on behalf of St James's Place Property Unit Trust

**Development Manager:** Hanover Cube

**Architect:** Buckley Gray Yeoman

**Structural Engineer:** Davies Maguire

**Services Consultant:** Hilson Moran

**Quantity Surveyor:** Academy Consulting

**Contractor:** 21 Construction

## 2.0 Key Design Criteria

### 2.1 Occupancy Criteria

The following criteria are measured against net internal floor areas:

- WCs – 1 person per 8m² floor area, assuming 80% utilization factor
- Means of Escape – 1 person per 6m²
- HVAC – ventilation, cooling and heating systems are designed based on an occupancy of 1 person per 8m², with ventilation rates of 12 litres/second/person

Ceiling Heights	Lower Ground	Ground-6th Floor	7th Floor
Height to plasterboard soffit	2600 mm	2900 mm	2800 mm

NOTE: all levels are indicative

Raised floor zones	Lower Ground	Ground – 6th	7th Floor
Clear Void	200 mm	250 mm	200 mm

### 2.4 Kitchen, Teapoint area

Provision on each floor for future tenant fit-out

### 2.5 Bicycle Storage & Showers

Spaces for 36 bicycles in the basement

Spaces for 4 bicycles at ground floor (Visitor cycle store)

40 Lockers

3 Unisex Showers in the basement

### 2.6 BREEAM

The base building achieved a Refurbishment and Fit-out 'Very Good' BREEAM rating and future tenant fit-out works will be required to maintain this rating

## 3.0 External Fabric

### 3.1 External Fabric

### 3.2 Cladding

- On ground to 7th floor – new capped curtain walling comprising full height glazing with vertical profiled spandrel panels at the first floor slab edge & at high level on the 7th floor
- On 2nd to 5th floors – new projecting feature curtain walling comprising full height glazing with vertical profiled spandrel panels at slab edges, with projecting anodised bronze surrounds encompassing the glazing
- A bronze anodized canopy is provided over the main entrance

- 2 no. outwards opening doors are provided to the terrace on 6th & 7th floors

### 3.6 External Lighting

- Reception Canopy – recessed downlights to the underside of the projecting canopy
- LED strip lighting is concealed under the edge of the parapet around the perimeter of the terraces on 6th & 7th floors

## 4.0 Internal Spaces

### 4.1 Reception

- Feature blackened steel vertical metalwork
- Feature free standing blackened steel metalwork in front of lift entrances
- Existing brickwork to be painted white
- Bespoke PPC metal cladding to entrance door reveals and concealed services
- Polished concrete flooring with blackened steel trim
- High quality entrance matt well to threshold
- Suspended coffered plasterboard ceiling with suspended linear light fittings
- Stainless steel tenant signage board with integrated tenant post boxes

### 4.2 Cores & Circulation

#### 4.2.1 Core Lobbies

- High quality large format ceramic tiled floor with plywood substrate on raised floor
- Factory sprayed lacquered solid core doors with stainless steel ironmongery
- High quality recessed downlights set into plasterboard soffit

#### 4.2.1 Staircases

##### 4.2.2.1 Stair 1 (Lower Ground to Roof)

High quality broadloom carpet from first floor up to roof level & large format ceramic tiled floor from lower ground to first floor landing level

Proprietary aluminium stair nosings throughout

Recessed downlight on plasterboard soffit at landing level & wall mounted light fittings to half landings

##### 4.2.2.3 Stair 2 (Basement to Ground)

Existing concrete stair from basement to ground to be refurbished as required, with painted contrast nosings, cycle wheel ramp & soffit mounted downlights

#### 4.2.3 Passenger Lift

- Black & white PPC aluminium panels
- Half height mirrors
- Stained oak handrail
- Black PPC aluminium skirting
- Black PPC car operating panel
- High quality large format polished concrete tiled floor on ply substrate

### 4.3 WCs

#### 4.3.1 Unisex WC Cubicles

- Floor to ceiling small format ceramic tiles to all new partitions, white to three no. walls with green tiles to sink/mirror wall
- High quality large format ceramic tiled floor with plywood substrate on raised floor
- Factory sprayed lacquered solid-core doors with stainless steel ironmongery
- High quality recessed downlights centered on metal ceiling panels
- Wall mounted vanity unit & mirror with brass trim
- White ceramic hand basin mounted to vanity unit, with wall mounted mixer taps
- Wall mounted WCs with concealed cisterns & brushed chrome flush plate
- Wall mounted hand dryer, double toilet roll holder, door stops, coat hooks & soap dispenser

### • 4.4 Office Space

- Fully accessible, steel encapsulated, sealed raised floor – to act as an air distribution plenum
- Existing and new soffits in the office spaces are drylined, skimmed and painted with nominal 100mm void provided for services distribution
- All conduits, cables, refrigerant pipework are located above plasterboard soffit
- Factory sprayed lacquered solid core doors onto office floor with stainless steel ironmongery
- Suspended circular luminaires
- Soffit mounted FCUs concealed within architectural galvanised cladding. Galvanised spiral oval ductwork and air distribution grilles
- All exposed within the office space
- Wall mounted FCUs to be concealed within PPC casings

## 5.0 Structures

### 5.5 Loading Criteria

Table 5.5 – 2 – Table of imposed loads

Area	UDL (kN/m²)	Point Load (kN)
Plant space	5.0	4.5
Roof (maintenance only)	0.75	0.9
Offices floors	2.5 +1.0	2.7
Terraces (accessible)	3.0	4.5

to BS 6399-1



6.0 Mechanical Services

Design Temperatures

- External Temperature  
29°C db/20°C wb Summertime  
(although all plant rated  
up to 35°C ambient temp)
- 4oC Saturated Winter
- Internal Temperatures  
24°C ± 2°C db uncontrolled RH (Cooling)  
(BCO Design Standard)  
20°C ± 2°C db uncontrolled RH (Heating)  
(BCO Design Standard)

Cooling Load Gains

- Lighting 10 w/m²
- Tenants small power 25 w/m²
- People 80W (sensible); 60W (latent)

There is an area for tenant plant on the roof

Ventilation Rates

- Occupation density 1 person/8m²  
floor area per person
- A minimum fresh air quantity of 12l/s/person
- 8 air changes/hour toilet make up air
- 10 air changes/hour toilet extract air
- 2 air changes/hour through natural  
ventilation of reception

6.1 Air-conditioning

The reception & offices are air conditioned  
via energy efficient Mitsubishi 2 pipe VRF  
system with full heat recovery to enable  
simultaneous heating and cooling

Internal terminal units are zoned taking  
into account BCO Guide to Specification  
2014, with fan coil type units at high level  
discharging secondary air to linear diffusers

Fresh air ventilation for the reception is provided  
via the main entrance doors, with electric over  
door curtain to prevent cold air penetrating  
the reception at peak hours supplemented  
with Mitsubishi 2 pipe DX split system

6.1 Building Management System

The system is controlled via Trend BMS

6.2 General Ventilation

New air handling unit is located at roof  
level incorporating supply & extract fan  
assemblies, DX heating & cooling coil,  
filtration, electrical frost protection coil  
and heat recovery thermal wheel

7.0 Electrical Services

The LV distribution has been designed for a  
400/230 Volts. 50 Hz AC supply with a variation  
of +10% -6% in voltage and +1% in frequency  
with power factor correction to 0.95 lagging

Lighting	10 W/m²
Small power	25 W/m2 + 10%
HVAC plant	8 W/m²
Small Power Additional Capacity	10 W/m²

7.2 Lighting

The lighting installation has been designed  
to provide the following lux levels:

- Office Areas: 400 lux at desktop height  
(0.8m AFFL)
- Toilets: 200 lux

The office areas are illuminated using suspended  
circular LED luminaires mounted in to the soffit  
and circular surface/recessed LED downlighters  
to perimeter margins and plasterboard margins

Emergency lighting is installed in accordance  
with BS 5266

7.3 Fire Alarms

A new analogue addressable fire alarm system  
has been installed covering the whole the  
building, in compliance with BS 5839 part 1: 2002

Fire telephone and refuge intercom system  
is provided within firefighting lobby  
and WC refuge location at every floor

The system is in compliance with  
BS 9999 and BS 5839

7.4 Security

There will be a landlord CCTV system to  
provide coverage to the reception and  
basement to Seventh floor lobby areas

Containment system with draw wires  
to allow for tenant installed access control

Interlink provided between main  
entrance intercom and each tenancy

8.0 Lifts

2 No. new lifts in accordance with  
BCO (2014) serving lower ground  
floor to level 7 consisting of:

1. Dual entry 675kg 9 person MRL passenger  
and firefighting lift – rated speed 1m/s
2. Single entry 825kg 11 person MRL passenger  
lift – rated speed 1m/s

The lifts are designed to provide the following  
performance criteria:

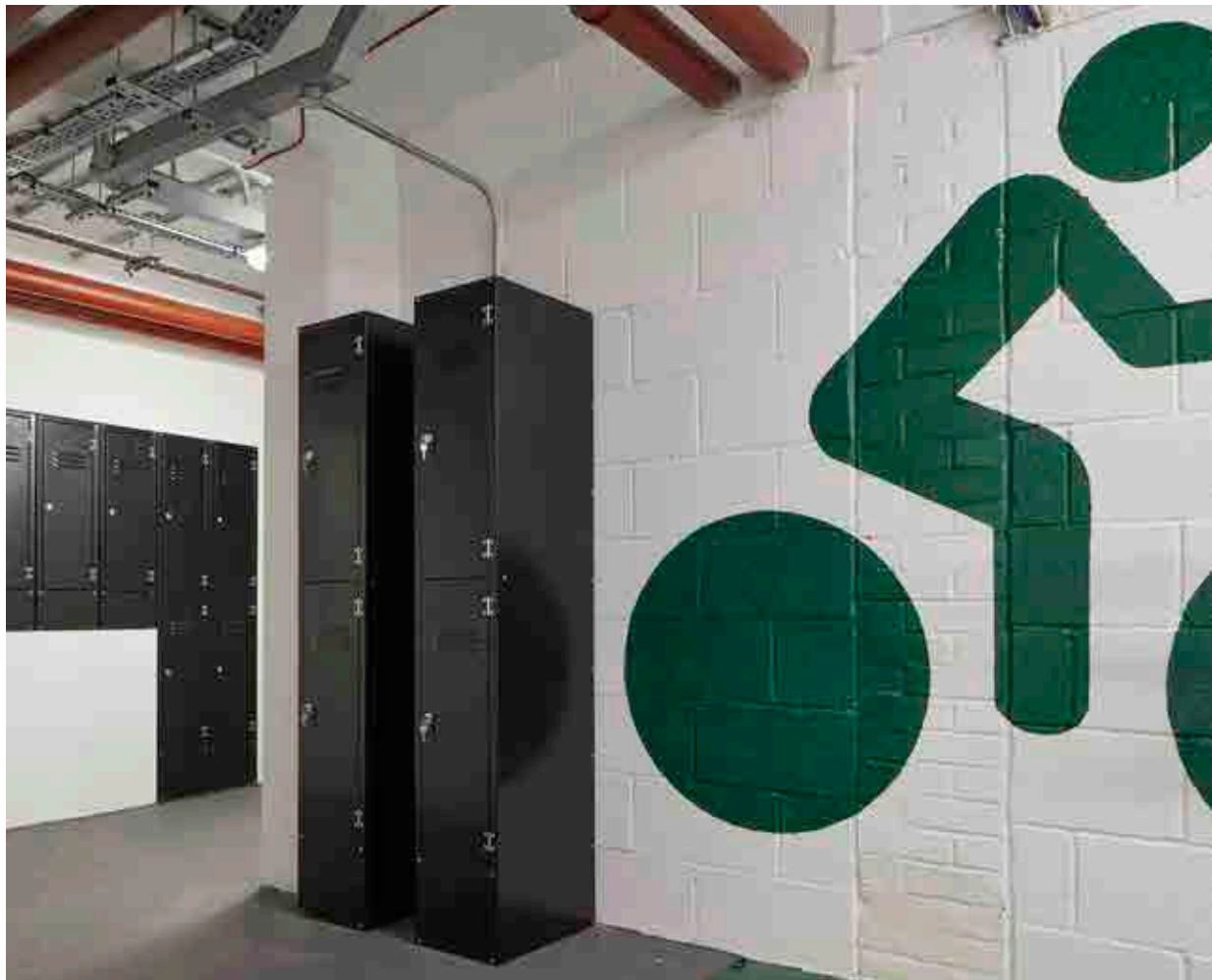
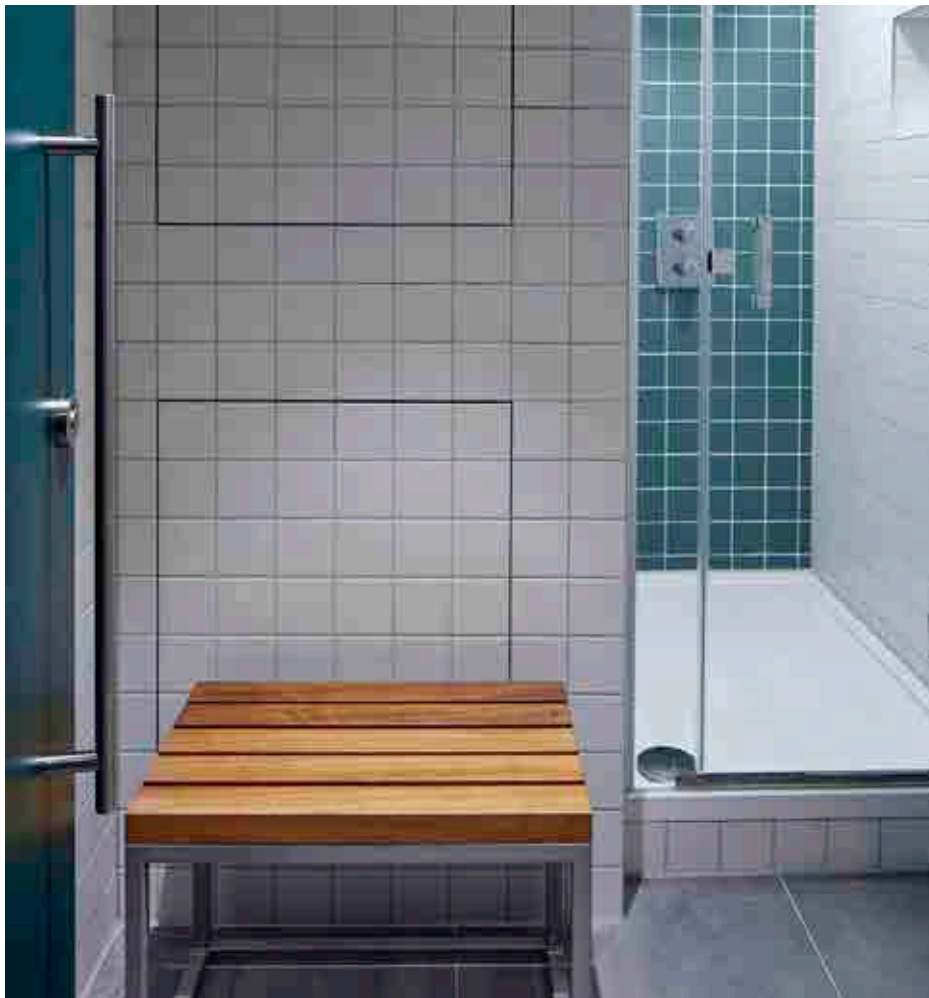
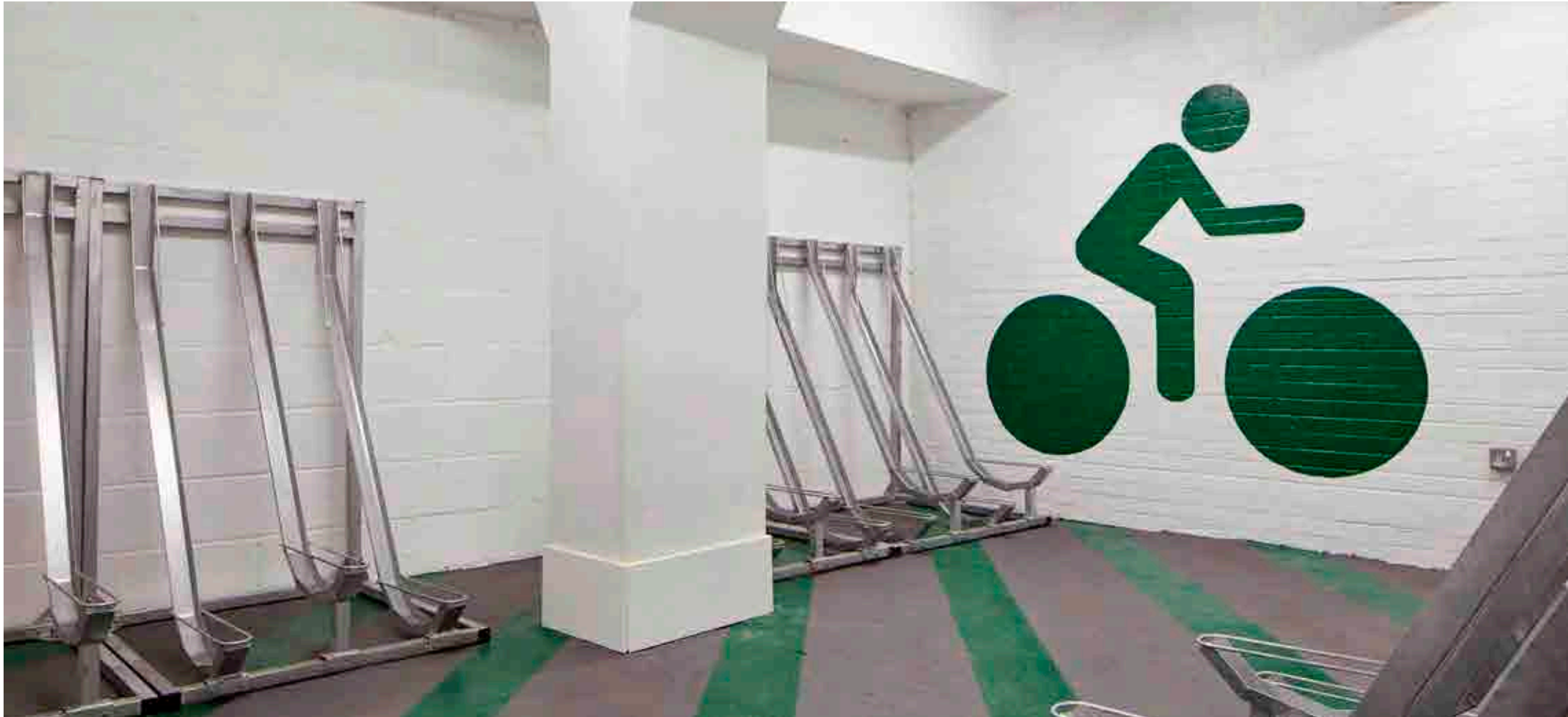
Morning Peak

- Average waiting time ≤25 seconds  
(across all floors)

- Average time to destination ≤ 90 seconds

Lunchtime Peak

- Average waiting time ≤ 40 seconds  
(across all floors)









75FARRINGDON.COM

More information:

CROSSLAND  
| OTTER HUNT |

RICHARD  
SUSSKIND

**Phil Frenay**  
phil@coh.eu  
T: 020 7408 1114  
M: 07818 566174

**Peter Dewar**  
peter@coh.eu  
T: 020 7408 1114  
M: 07957 422394

**Ashley Goodman**  
ashley@richardsusskind.com  
T: 020 7831 8311  
M: 07973184329

**Josh Perlmutter**  
josh@richardsusskind.com  
T: 020 7831 8311  
M: 07814 699096

A development by

OrchardStreet

Architect

BuckleyGrayYeoman

Misrepresentation Act: The joint agents, for themselves and for the vendors or lessors of this property, whose agents they are, give notice that: These particulars are produced in good faith, but are set out as a general guide only, and do not constitute any part of a contract; No person in the employment of the joint agents has any authority to make or give any representation or warranty whatever in relation to this property; Unless otherwise stated all rents or prices quoted are exclusive of VAT which may be payable in addition. Product images are indicative CGIs. December 2019. SO11720.