



The Little Cottage Bath Road, Kiln Green, Berkshire RG10 9SE

Price guide £375,000

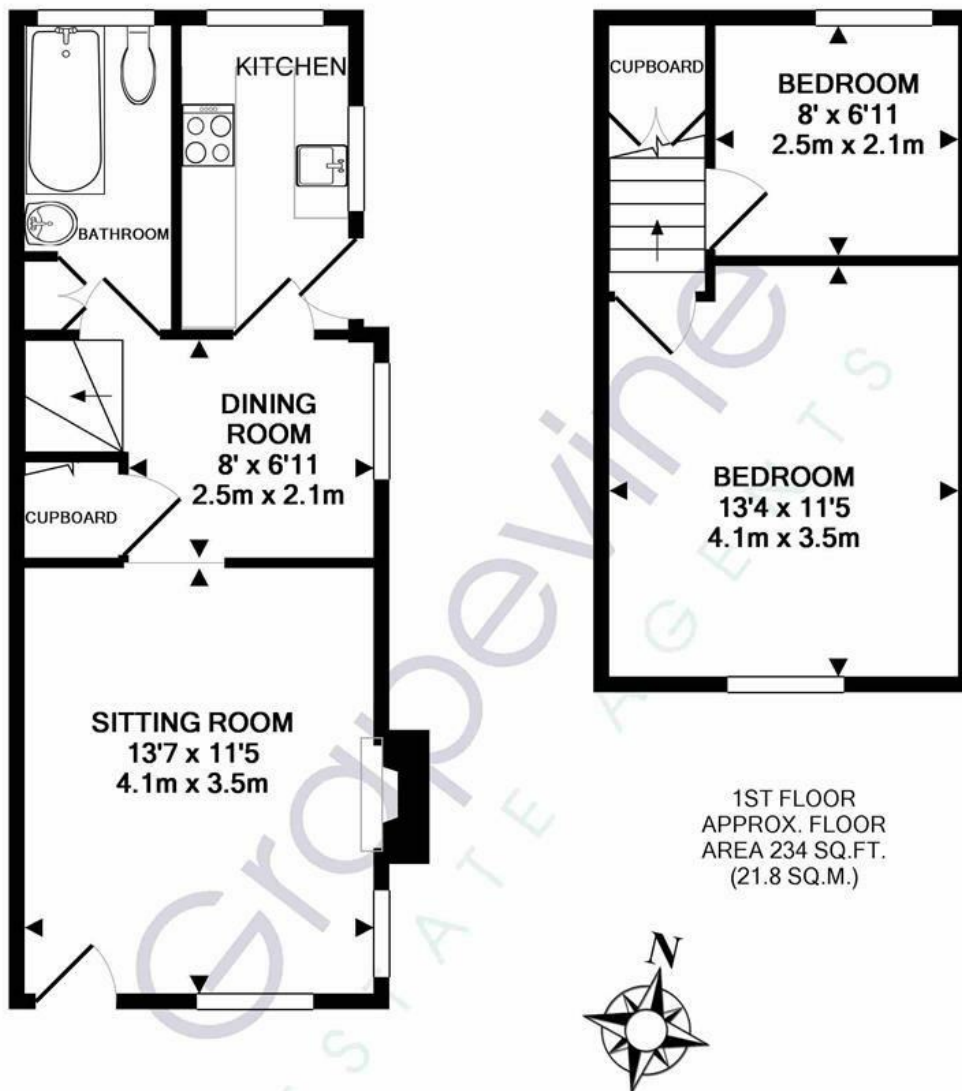
Grapevine Estate Agents offer to the market a delightful two-bedroom semi-detached Grade II listed period cottage of immense charm and character. The property is in excellent decorative order and with beautiful character features.

Ground floor accommodation comprises sitting room with feature open fireplace, dining room, kitchen with door out to side courtyard and a bathroom off the stairs. To the first floor there is a master double bedroom and bedroom two with delightful views over the rear garden and open countryside.

Outside the cottage to the front there is a private and beautiful landscaped Cottage style garden with generous driveway parking, side access though to a courtyard area and then onto the private Cottage-style rear garden.

Within a mile of Twyford village centre and mainline railway station serving London Paddington and Reading (cross rail due). Occupying a delightful semi-rural position. The property conveniently located to the towns of Maidenhead, Reading and Henley on Thames. It offers good motorway access to London via the M4 Junction 8/9.





GROUND FLOOR
APPROX. FLOOR
AREA 343 SQ.FT.
(31.8 SQ.M.)

1ST FLOOR
APPROX. FLOOR
AREA 234 SQ.FT.
(21.8 SQ.M.)

THE LITTLE COTTAGE TOTAL APPROX. FLOOR AREA 577 SQ.FT. (53.6 SQ.M.)

Whilst every attempt has been made to ensure the accuracy of the floor plan contained here, measurements of doors, windows, rooms and any other items are approximate and no responsibility is taken for any error, omission, or mis-statement. This plan is for illustrative purposes only and should be used as such by any prospective purchaser. The services, systems and appliances shown have not been tested and no guarantee as to their operability or efficiency can be given

Made with Metropix ©2019

