



barnard marcus

Bayes Close, London SE26 6DH



welcome to

Bayes Close, London

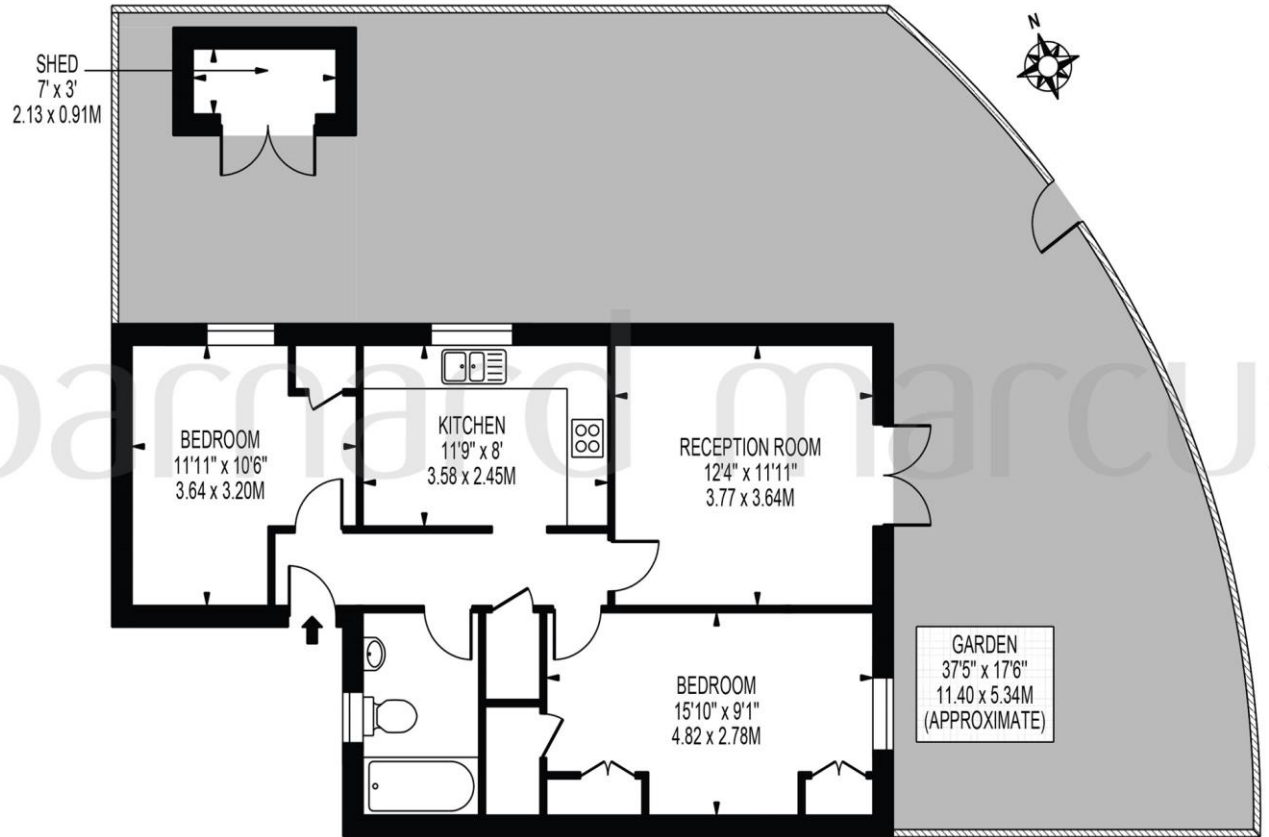
Barnard Marcus are proud to present this ground floor two double bedroom apartment to the market with access to a private garden. STUNNING! Barnard Marcus are proud to present this stunning two double bedroom ground floor apartment with its own private entrance & access to a private rear garden to the market. This property comprises of; Living Room, Kitchen, Family Bathroom, Two Double Bedrooms & Direct Access to a Private Garden. This property also benefits from a long lease, parking, double glazing and gas central heating. Offered to the market with no onward chain, interest is sure to be high so call Barnard Marcus on 0208 776 9384.



BAYES CLOSE

APPROXIMATE GROSS INTERNAL FLOOR AREA: 656 SQ FT - 60.99 SQ M
(EXCLUDING SHED)

APPROXIMATE GROSS INTERNAL AREA OF SHED: 21 SQ FT - 1.94 SQ M



GROUND FLOOR
FOR ILLUSTRATION PURPOSES ONLY

THIS FLOOR PLAN SHOULD BE USED AS A GENERAL OUTLINE FOR GUIDANCE ONLY AND DOES NOT CONSTITUTE IN WHOLE OR IN PART AN OFFER OR CONTRACT.
ANY INTENDING PURCHASER OR LESSEE SHOULD SATISFY THEMSELVES BY INSPECTION, SEARCHES, ENQUIRIES AND FULL SURVEY AS TO THE CORRECTNESS OF EACH STATEMENT.
ANY AREAS, MEASUREMENTS OR DISTANCES QUOTED ARE APPROXIMATE AND SHOULD NOT BE USED TO VALUE A PROPERTY OR BE THE BASIS OF ANY SALE OR LET.



welcome to

Bayes Close, London

- 2 Double Bedrooms
- Excellent Condition Throughout
- Private Garden
- Parking Space
- Long Lease
- Double Glazing
- Gas Central Heating
- No Onward Chain

Tenure: Leasehold EPC Rating: C

This is a Leasehold property with details as follows; Term of Lease 199 years from 10 May 2004. Should you require further information please contact the branch. Please Note additional fees could be incurred for items such as Leasehold packs.

offers over

£425,000



Please note the marker reflects the postcode not the actual property

view this property online [barnardmarcus.co.uk/Property/SYD102821](https://www.barnardmarcus.co.uk/Property/SYD102821)



Property Ref:
SYD102821 - 0004

1. MONEY LAUNDERING REGULATIONS Intending purchasers will be asked to produce identification documentation at a later stage and we would ask for your co-operation in order that there is no delay in agreeing the sale. 2. These particulars do not constitute part or all of an offer or contract. 3. The measurements indicated are supplied for guidance only and as such must be considered incorrect. Potential buyers are advised to recheck measurements before committing to any expense. 4. We have not tested any apparatus, equipment, fixtures or services and it is in the buyers interest to check the working condition of any appliances. 5. Where an EPC, or a Home Report (Scotland only) is held for this property, it is available for inspection at the branch by appointment. If you require a printed version of a Home Report, you will need to pay a reasonable production charge reflecting printing and other costs. 6. We are not able to offer an opinion either written or verbal on the content of these reports and this must be obtained from your legal representative. 7. Whilst we take care in preparing these reports, a buyer should ensure that his/her legal representative confirms as soon as possible all matters relating to title including the extent and boundaries of the property and other important matters before exchange of contracts.

Barnard Marcus is a trading name of Sequence (UK) Limited which is registered in England and Wales under company number 4268443, Registered Office is Cumbria House, 16-20 Hockliffe Street, Leighton Buzzard, Bedfordshire, LU7 1GN. VAT Registration Number is 500 2481 05.



barnard marcus



020 8776 9384



sydenham@barnardmarcus.co.uk



13 Sydenham Road, Sydenham, London, SE26 5EX



[barnardmarcus.co.uk](https://www.barnardmarcus.co.uk)