



Dorryn Court Trewsbury Road, LONDON SE26 5DR



welcome to

Dorryn Court Trewsbury Road, LONDON

A meticulously cared for 2 bedroom first floor apartment located only 0.4 miles from Sydenham railway station and vibrant high street. Benefits include 701 sq ft of spacious accommodation and private garage en bloc. Immediate inspection is highly recommended. Introducing a beautifully presented two-bedroom first-floor apartment on Trewsbury Road, Sydenham. This charming property offers 701 sq ft of light and spacious accommodation, featuring two double bedrooms, with the master benefiting from built-in wardrobes. The main reception area is generously sized, accommodating large furniture and a dining area. The separate kitchen provides ample worktop and storage space, perfect for culinary enthusiasts. The modern main bathroom boasts floor-to-ceiling tiles, a bathtub with an overhead shower unit, and space for a washing machine and dryer. Additionally, the property includes its own garage en bloc, providing convenient storage or parking. Trewsbury Road is ideally located just 0.4 miles from both Sydenham and Penge railway stations, offering direct links to London. The property is also moments away from the high street, featuring excellent pubs, restaurants, and open green spaces.

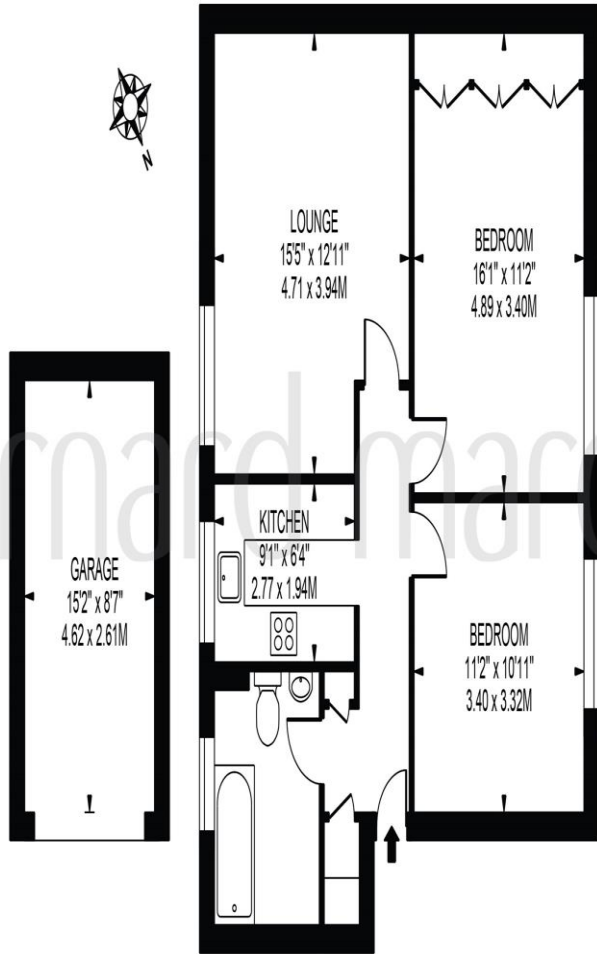


DORRYN COURT

APPROXIMATE GROSS INTERNAL FLOOR AREA: 701 SQ FT - 65.13 SQ M

(EXCLUDING GARAGE)

APPROXIMATE GROSS INTERNAL FLOOR AREA OF GARAGE: 130 SQ FT - 12.06 SQ M



FIRST FLOOR

FOR ILLUSTRATION PURPOSES ONLY

THIS FLOOR PLAN SHOULD BE USED AS A GENERAL OUTLINE FOR GUIDANCE ONLY AND DOES NOT CONSTITUTE IN WHOLE OR IN PART AN OFFER OR CONTRACT.
ANY INTENDING PURCHASER OR LESSEE SHOULD SATISFY THEMSELVES BY INSPECTION, SEARCHES ENQUIRIES AND FULL SURVEY AS TO THE CORRECTNESS OF EACH STATEMENT.
ANY AREAS, MEASUREMENTS OR DISTANCES QUOTED ARE APPROXIMATE AND SHOULD NOT BE USED TO VALUE A PROPERTY OR BE THE BASIS OF ANY SALE OR LET.



welcome to

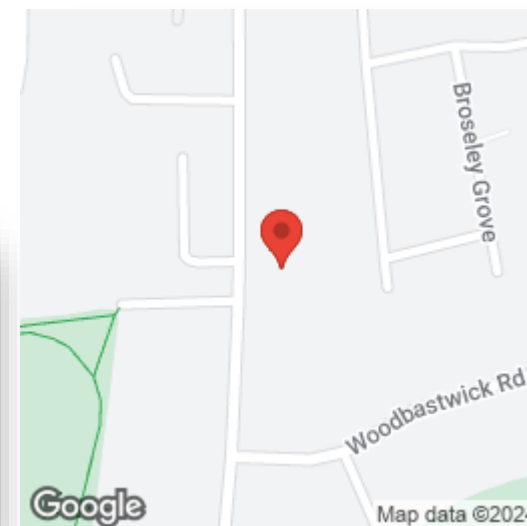
Dorryn Court Trewsbury Road, LONDON

- 2 bedroom apartment
- 701 sq ft
- Garage en bloc
- 0.4 miles to Sydenham Railway Station
- Well presented throughout

Tenure: Leasehold EPC Rating: C

This is a Leasehold property with details as follows; Term of Lease 199 years from 29 Sep 1965. Should you require further information please contact the branch. Please Note additional fees could be incurred for items such as Leasehold packs.

£425,000



Please note the marker reflects the postcode not the actual property

view this property online barnardmarcus.co.uk/Property/SYD102763



Property Ref:
SYD102763 - 0005

1. MONEY LAUNDERING REGULATIONS Intending purchasers will be asked to produce identification documentation at a later stage and we would ask for your co-operation in order that there is no delay in agreeing the sale. 2. These particulars do not constitute part or all of an offer or contract. 3. The measurements indicated are supplied for guidance only and as such must be considered incorrect. Potential buyers are advised to recheck measurements before committing to any expense. 4. We have not tested any apparatus, equipment, fixtures or services and it is in the buyers interest to check the working condition of any appliances. 5. Where an EPC, or a Home Report (Scotland only) is held for this property, it is available for inspection at the branch by appointment. If you require a printed version of a Home Report, you will need to pay a reasonable production charge reflecting printing and other costs. 6. We are not able to offer an opinion either written or verbal on the content of these reports and this must be obtained from your legal representative. 7. Whilst we take care in preparing these reports, a buyer should ensure that his/her legal representative confirms as soon as possible all matters relating to title including the extent and boundaries of the property and other important matters before exchange of contracts.



barnard marcus



020 8776 9384



sydenham@barnardmarcus.co.uk



13 Sydenham Road, LONDON, SE26 5EX



barnardmarcus.co.uk