



## Parkside Crescent, Ketley, Telford

£145,000



 2
  1
  1

Leasehold | EPC rating: B

- Millennium Village Location
- Private Balcony with Views
- Allocated Parking Space

- \*\*\*NO UPWARD CHAIN\*\*\*
- Open Plan Living Space
- 2 Bedroom Apartment

# BELVOIR!

Property is personal

Email  
[telford@belvoir.co.uk](mailto:telford@belvoir.co.uk)

Phone  
**01952 258562**

## Description

### Modern 2-Bedroom Second Floor Flat with Balcony and Parking

Located on the second floor, this stylish and spacious two-bedroom flat offers comfortable modern living with a bright open-plan layout. The heart of the home is a generous kitchen/diner and sitting area, designed for both relaxing and entertaining. Large windows and a private balcony provide plenty of natural light and offer a lovely view — perfect for morning coffee or evening unwinding.

Both bedrooms are well-proportioned, with neutral decor ready for your personal touch. The flat also benefits from an allocated parking space, making daily living even more convenient. Whether you're a first-time buyer, downsizer, or looking for a low-maintenance home in a great location, this flat is a must-see.

Service fee and ground rent for 25/26:

- Ground rent: £12.50 monthly
- Service charges: £123 monthly
- Total: £135.50 monthly

Leasehold (993 years remaining) / Council Tax A / EPC B

## Photographs



Rooms

Hallway

4.68m x 1.07m (15'5" x 3'6")

Bedroom 1

3.16m x 3.12m (10'5" x 10'2")

Bedroom 2

3.76m x 2.66m (12'4" x 8'8")

Bathroom

2.05m x 1.68m (6'8" x 5'6")

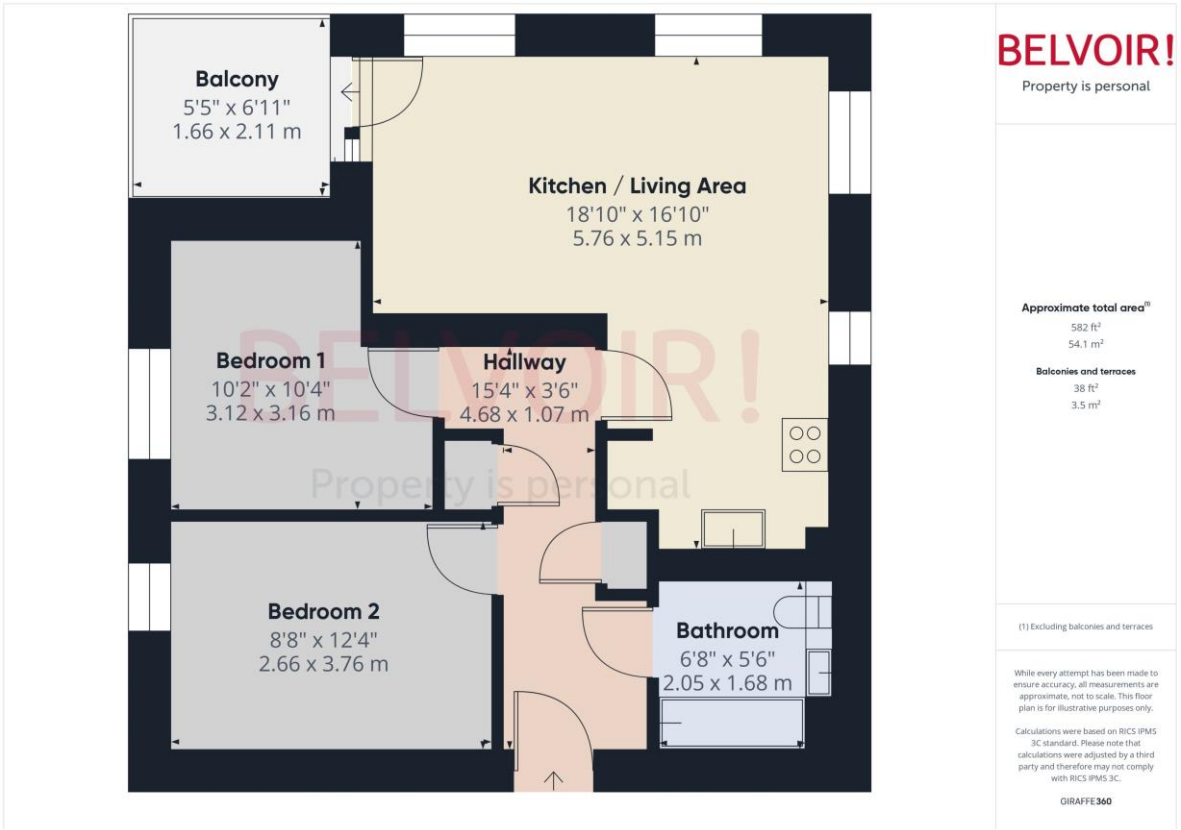
Kitchen/Diner/Sitting Room

5.76m x 5.15m (18'11" x 16'11")

Balcony

2.11m x 1.66m (6'11" x 5'5")

Floorplan



Map



[belvoir.co.uk/telford-estate-agents/](https://belvoir.co.uk/telford-estate-agents/)