



Glen Cottages, Brickhill Lane, Ketley

£249,950



 3
  2
  1

Freehold | EPC rating: C

- *** NO UPWARD CHAIN ***
- Close to local schools and amenities

- 3-Bedroom Home
- Private Garden
- Desirable location in Ketley

BELVOIR!

Property is personal

Email
telford@belvoir.co.uk

Phone
01952 258562

Description

Welcome to Glen Cottages, a charming and spacious three-bedroom property nestled in a quiet and desirable location in Ketley. This delightful home offers modern living with a warm and inviting atmosphere, perfect for families, couples, or anyone seeking comfort and convenience.

As you enter the property, you are greeted by a bright and spacious hallway that sets the tone for the rest of the home. The ground floor features a handy downstairs WC and a generous living room, complete with French doors that open out onto a large, private rear garden—ideal for entertaining or relaxing in the sunshine.

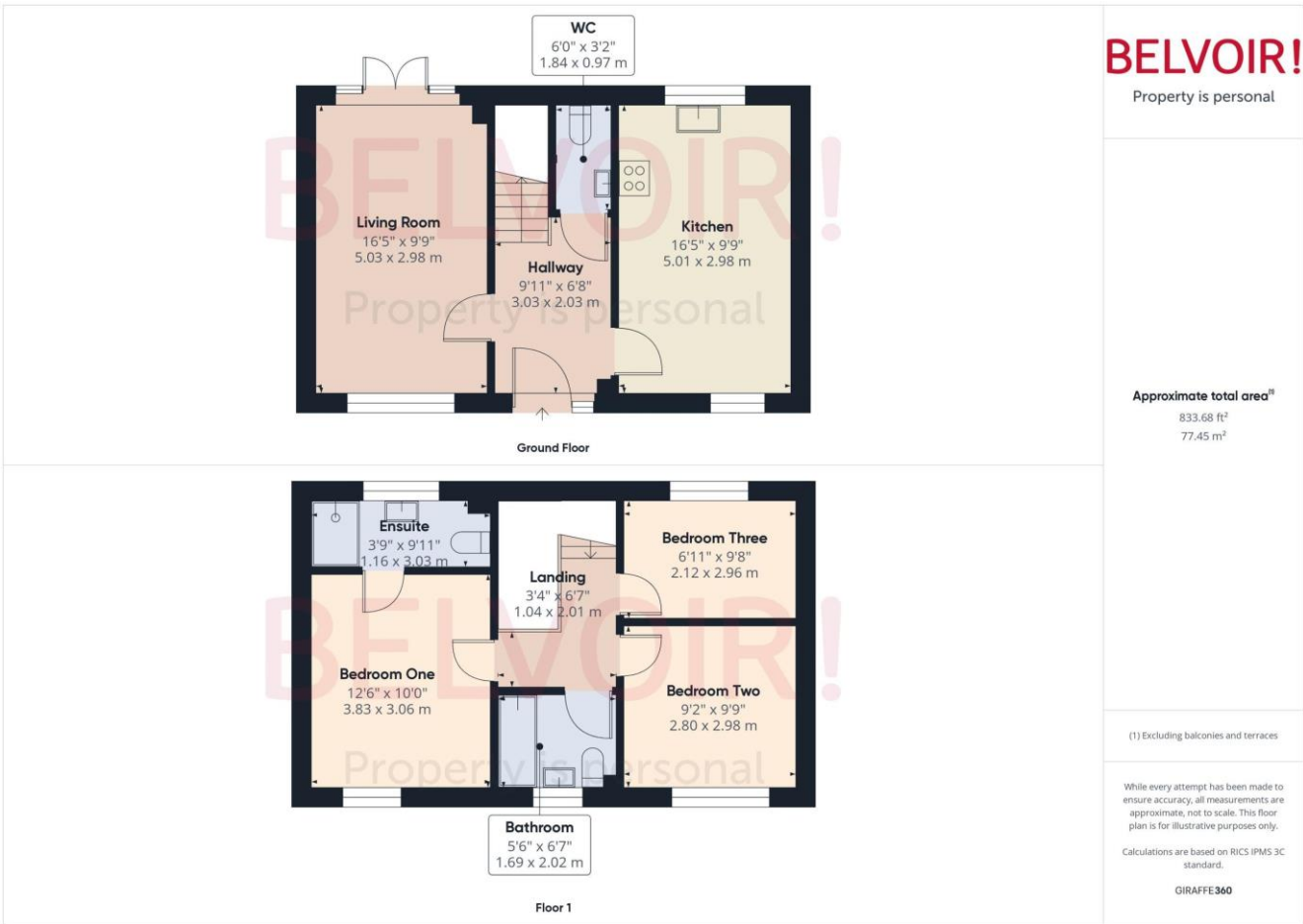
The modern kitchen diner is equally impressive, offering ample space for cooking, dining, and family gatherings. Upstairs, the master bedroom boasts its own ensuite bathroom, providing a peaceful retreat. There is a second double bedroom, a well-proportioned single bedroom, and a stylish family bathroom to complete the upper floor. Outside, the property benefits from a private front driveway, providing off-road parking, and a convenient side gate offering easy access to the rear garden.

Ideally located, Glen Cottages is close to well-regarded local schools and a range of amenities, with excellent transport links making commuting and travel easy and convenient.

This beautifully presented home combines comfort, space, and practicality in a sought-after area. Early viewing is highly recommended.

Freehold / Council Tax Band C / EPC C

Floorplan



Rooms

Hallway

3.03m x 2.03m (9'11" x 6'8")

Living Room

5.03m x 2.98m (16'6" x 9'10")

Kitchen

5.01m x 2.98m (16'5" x 9'10")

Downstairs WC

1.84m x 0.97m (6'0" x 3'2")

Landing

2.01m x 1.04m (6'7" x 3'5")

Bedroom One

3.83m x 3.06m (12'7" x 10'0")

Bedroom One Ensuite

3.03m x 1.16m (9'11" x 3'10")

Bedroom Two

2.98m x 2.8m (9'10" x 9'2")

Bedroom Three

2.96m x 2.12m (9'8" x 7'0")

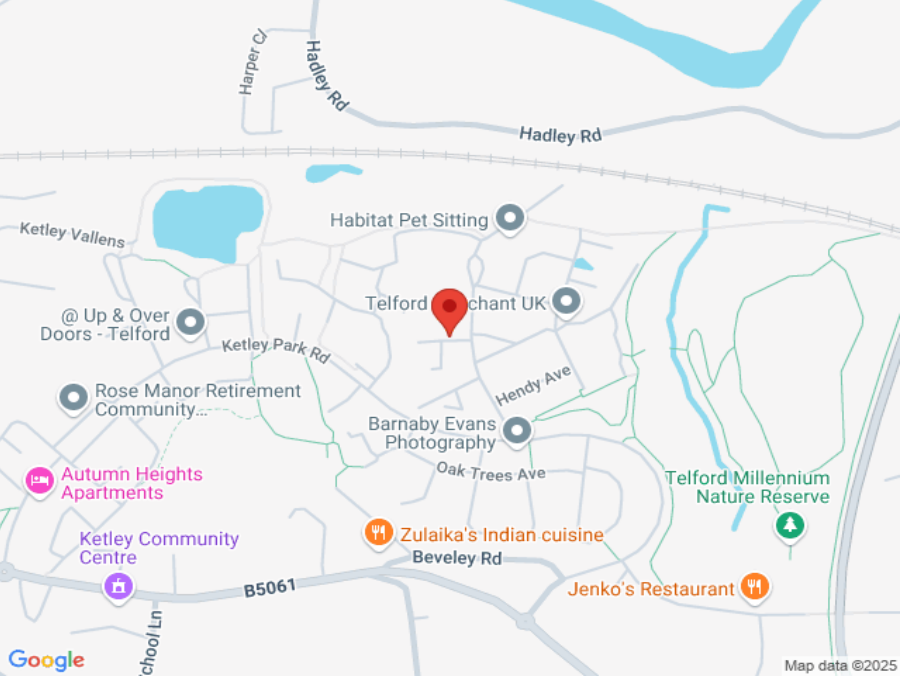
Bathroom

2.02m x 1.69m (6'7" x 5'6")

Photographs



Map



Notes

[illegible]