



Parkside Crescent, Ketley, Telford

£145,000



2



1



1

Leasehold | EPC rating: B

- Smart 2 Bedroom Apartment
- Popular Residential Estate
- Open Plan Living Space

- Ideal First Time Buy/Investment
- Allocated Parking
- Private Balcony

BELVOIR!

Property is personal

Email
telford@belvoir.co.uk

Phone
01952 258562

Description

Nestled in the sought-after Millennium Village in Ketley, this stunning two-bedroom first-floor apartment on Parkside Crescent offers modern living at its finest. An ideal choice for first-time buyers or investors, this is a property not to be missed.

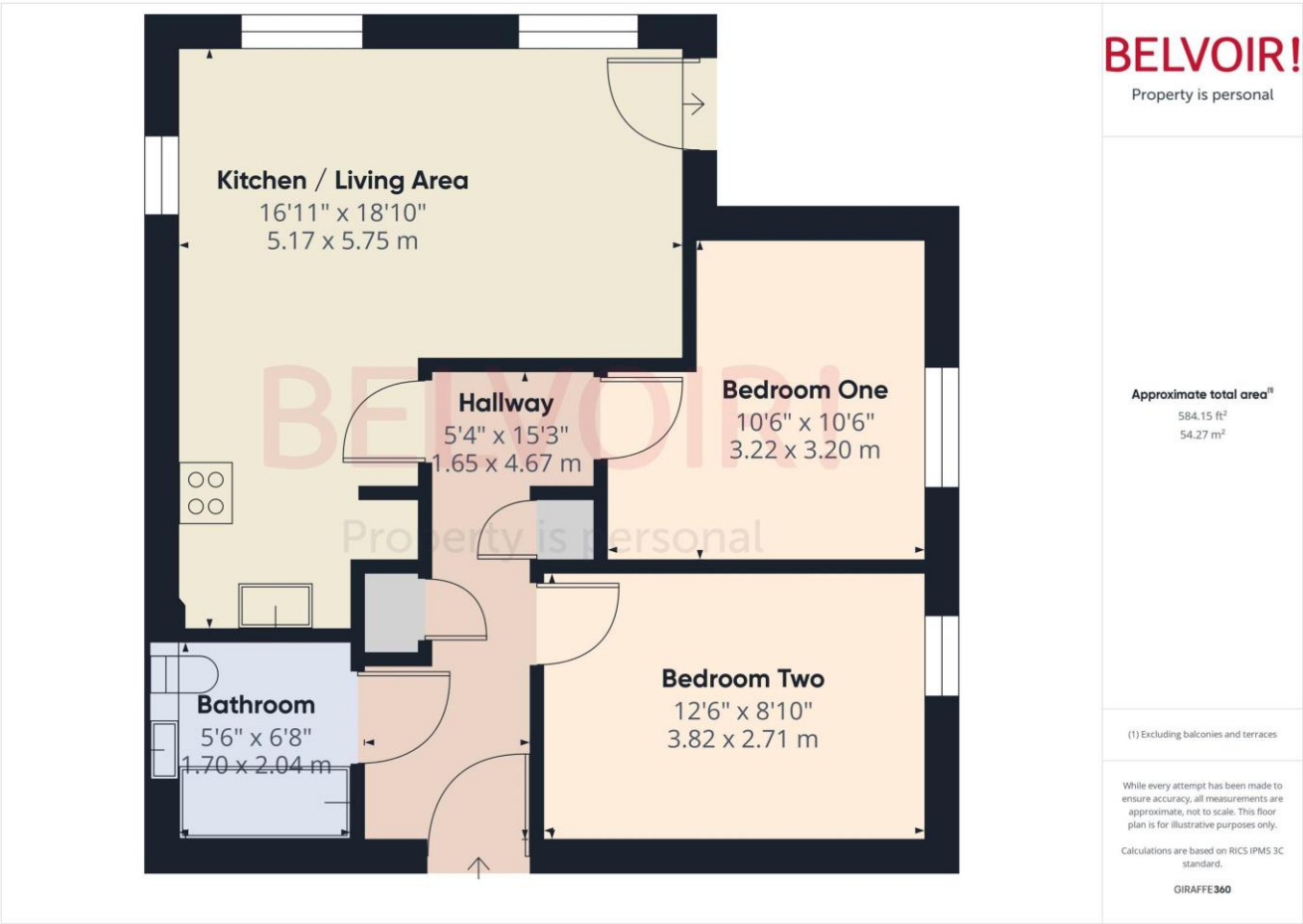
The apartment features a spacious open-plan kitchen and living area, perfectly designed for both relaxation and entertaining. The living space opens onto a charming balcony with a front aspect, providing a lovely spot to enjoy your morning coffee or unwind after a long day. Both bedrooms are generously sized doubles, offering plenty of versatility and comfort, while the stylish bathroom is finished to a high standard.

With its prime location, contemporary design, and excellent amenities along with secure entry and allocated parking for added convenience, this property represents an outstanding opportunity to join the vibrant and welcoming community of Millennium Village. Don't miss out—schedule your viewing today!

Leasehold issued on 21 November 2019 - Lease remaining: 993 years

Leasehold / EPC Rating B / Council Tax Band A

Floorplan



Rooms

Hallway

4.67m x 1.65m (15'4" x 5'5")

Bedroom One

3.22m x 3.2m (10'7" x 10'6")

Bedroom Two

3.82m x 2.71m (12'6" x 8'11")

Bathroom

2.04m x 1.7m (6'8" x 5'7")

Kitchen/Living Area

5.75m x 5.17m (18'11" x 17'0")

Photographs



Map



Notes

This image shows a single sheet of white paper with horizontal ruling lines. The lines are evenly spaced and run across the width of the page. There are no margins, text, or other markings on the paper.