



## Board Close, St. Georges, Telford

£245,000



3



1



2

Freehold | EPC rating: D

- Popular Residential Area
- Three Bedrooms
- Double Driveway

- Large Kitchen & Diner
- External Garden Storage Room
- Close to Local Amenities

# BELVOIR!

Property is personal

Email  
[telford@belvoir.co.uk](mailto:telford@belvoir.co.uk)

Phone  
**01952 258562**

## Description

Welcome to Board Close, St Georges, a well appointed and extended three bedroom semi detached house would make the perfect family home located in a highly desirable residential area close to the local schools and amenities.

Step inside and you will find a porch area which leads into a beautifully spacious living room which has been extended and would make an ideal space for the ever growing family. The beautifully light open plan kitchen diner is fitted with contemporary finishes with integrated oven and hob, offering a stylish practical space for cooking and entertaining family and friends alike.

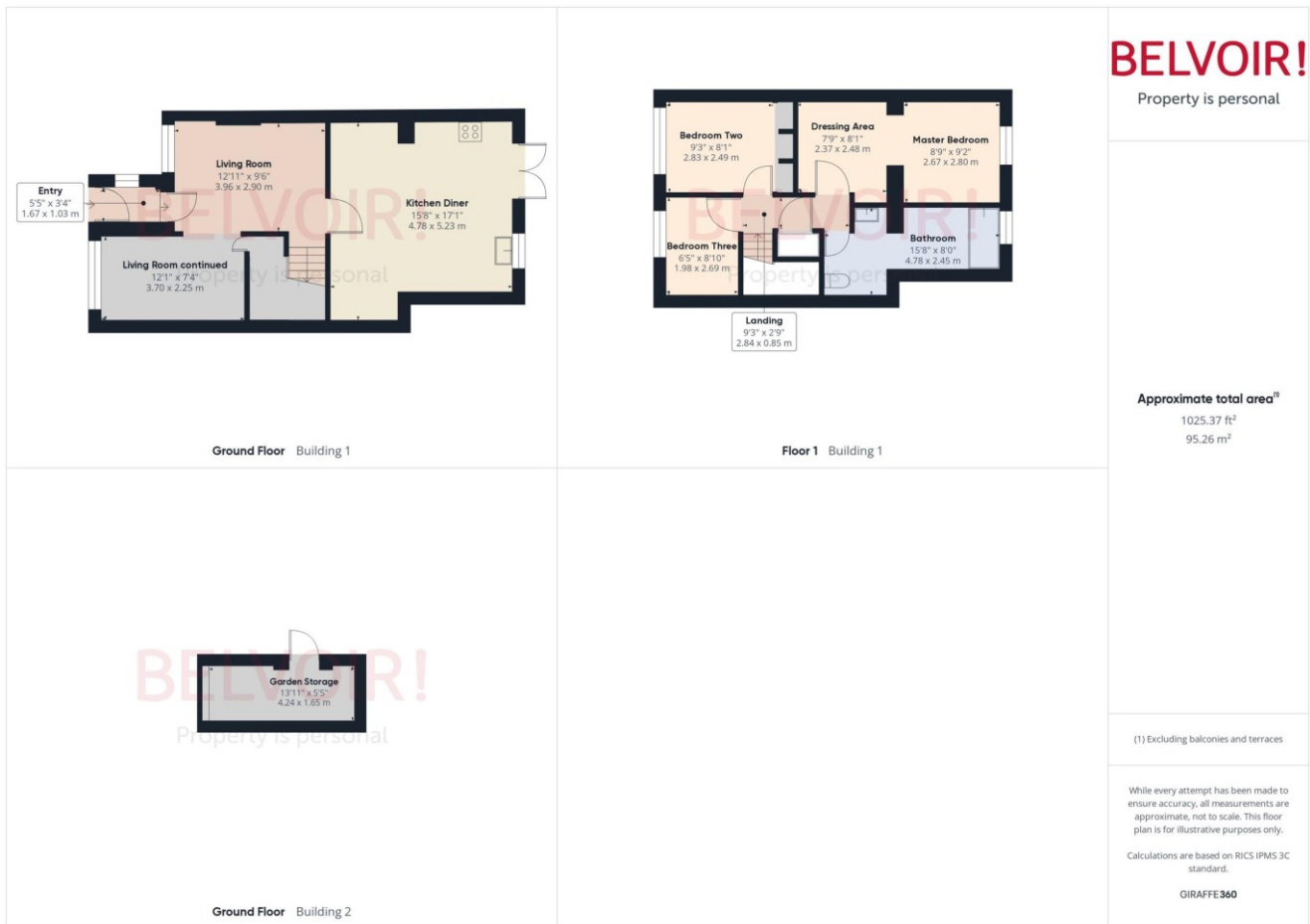
Rising to the first floor there are three generously sized bedrooms, providing plenty of room for the growing family. The master bedroom benefits from a dressing area with space for storage and a feature dressing table.

Externally there is a secluded enclosed rear garden laid to lawn with a patio area which would be ideal for family barbeques or a space to quietly relax out of doors, additionally there is a brick built garden storage room. The front of the property boasts a large block paved driveway providing ample parking for occupants and visitors.

Don't miss this opportunity to view this modern, well appointed home, contact Belvoir! Sales Team on 01952 248000 to arrange your viewing.

Freehold / Council Tax Band B / EPC Rating D

## Floorplan



**BELVOIR!**

Property is personal

## Rooms

### Entry

1.03m x 1.67m (3'5" x 5'6")

### Living Room

2.9m x 3.96m (9'6" x 13'0")

### Living Room continued

2.25m x 3.7m (7'5" x 12'1")

### Kitchen Diner

4.78m x 5.23m (15'8" x 17'2")

### Landing

0.85m x 2.84m (2'10" x 9'4")

### Master Bedroom

2.67m x 2.8m (8'10" x 9'2")

### Master Dressing Area

2.37m x 2.48m (7'10" x 8'1")

### Bedroom Two

2.49m x 2.83m (8'2" x 9'4")

### Bedroom Three

1.98m x 2.69m (6'6" x 8'10")

### Bathroom

2.45m x 4.78m (8'0" x 15'8")

### Garden Storage

1.65m x 4.24m (5'5" x 13'11")



# Photographs



