



## Ketley Park Road, Ketley, Telford

£105,000



Leasehold | EPC rating: C

- **\*\*NO UPWARDS CHAIN\*\***
- Executive Living
- Ground Floor Accomodation

- Very Popular Residential Area
- One Bedroom Apartment
- Allocated Parking

# BELVOIR!

Property is personal

Email  
[telford@belvoir.co.uk](mailto:telford@belvoir.co.uk)

Phone  
**01952 258562**

## Description

Spacious & Airy Ground Floor One Bedroom Apartment, with ample natural light throughout the apartment, creating a bright and welcoming atmosphere. Designed for comfort and convenience, perfect for professionals seeking a modern living space. Situated in a highly sought-after area where residents often move within the estate, reflecting its desirability and community feel.

A perfect starter home with all the essential amenities. Conveniently located and designed for a busy lifestyle. For investors this a great opportunity for rental income in a popular area.

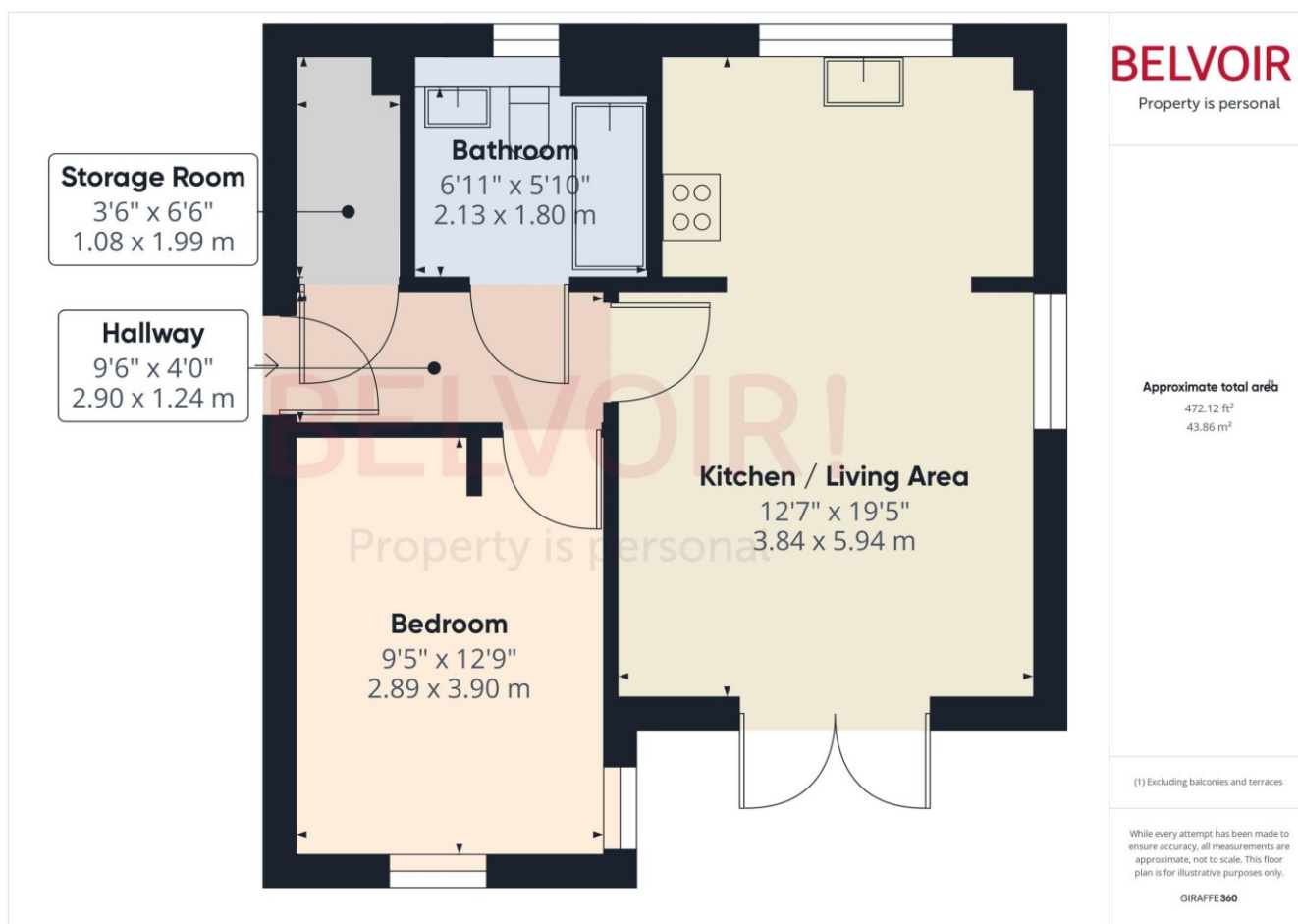
This ground floor apartment offers a fantastic blend of comfort and style. With its bright and airy design, it provides a welcoming environment for any new homeowner or tenant. Located in a thriving estate, this property not only promises a great living experience but also a sound investment.

Allocated Parking: Dedicated parking space ensures hassle-free parking at any time.

Vendor has advised there are monthly service charge payments are set at approximately £148 which includes ground rent to Sanctuary Housing.

Leasehold 999 years from 1 January 2007 / EPC Rating C / Council Tax band A

## Floorplan



## Rooms

### Hallway

1.24m x 2.9m (4'1" x 9'6")

### Storage Room

1.08m x 1.99m (3'6" x 6'6")

### Bathroom

1.8m x 2.13m (5'11" x 7'0")

### Bedroom

2.89m x 3.9m (9'6" x 12'10")

### Kitchen / Living Area

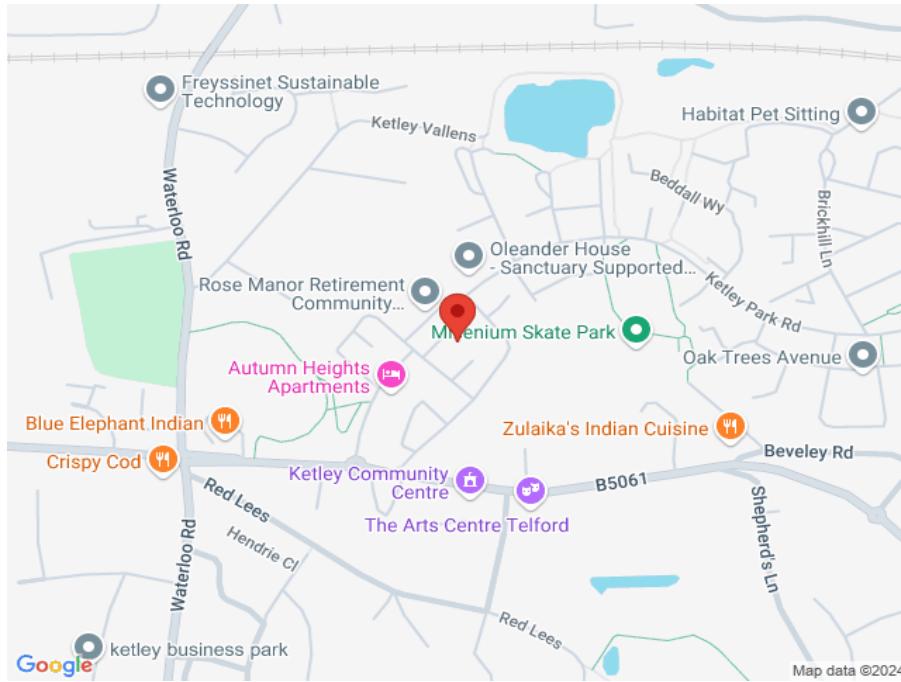
3.84m x 5.94m (12'7" x 19'6")



# Photographs



# Map



# Notes

---



---



---



---



---



---



---



---



---



---



---



---