



## Birchfield Way, Lawley, Telford

Fixed price £265,000



4 2 2

Freehold | EPC rating: U

- Sought after location
- Master with ensuite
- Council Tax Band C

- Ideally placed for local Primary School
- Freehold

# BELVOIR!

Property is personal

Email  
[telford@belvoir.co.uk](mailto:telford@belvoir.co.uk)

Phone  
**01952 258562**



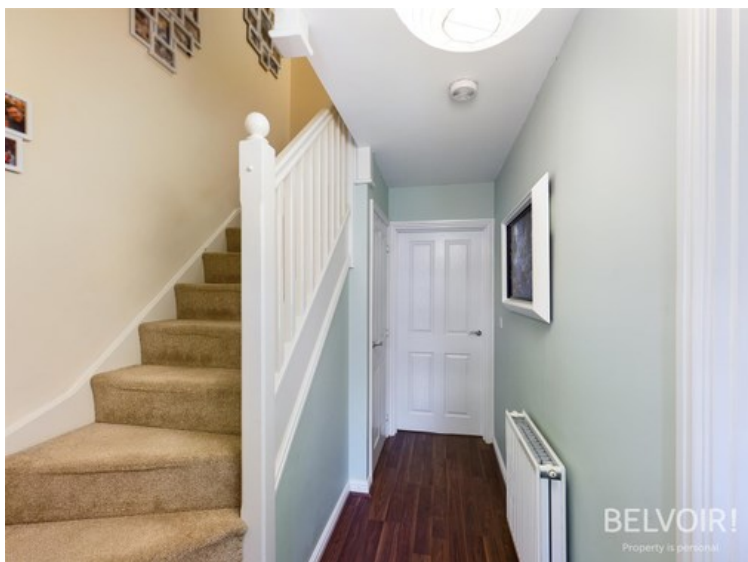
## Description

Belvoir! are pleased to present to market this stunning four bedroom semi detached family home, this end of terrace town house is situated in the ever popular residential area of Lawley being well placed for local shops, school, amenities and M54 motorway commuter links.

Set over three floors, this modern recently built home is finished to a high specification throughout with neutral decor and sleek fittings. The ground floor comprises of hallway, guest cloakroom/WC, fitted kitchen/diner to the front aspect with high gloss offwhite units and integrated appliances including single oven, gas hob, extractor. To the rear of the property there is a spacious lounge with French doors which open onto the rear garden. The first floor houses two double bedrooms and forth single bedroom along with family bathroom having modern white suite with bath and electric shower and storage cupboard off the landing. The master bedroom suite occupies the top floor with ensuite having enclosed cubicle with electric shower. The Garage is located at rear of the property, with allocated parking. The property has gas central heating and double glazing throughout. Property Management Fee approximately £150 annually.

Freehold - Council Tax Band C - EPC Rating TBC

## Photographs



## Rooms

### Hallway

1.09m x 4.76m (3'7" x 15'7")

### Cloakroom/WC

0.97m x 1.74m (3'2" x 5'8")

### Kitchen Diner

2.81m x 4.18m (9'2" x 13'8")

### Living Room

3.54m x 4.90m (11'7" x 16'1")

### First Floor Landing

0.92m x 3.78m (3'0" x 12'5")

### Bedroom Two

2.83m x 3.97m (9'4" x 13'0")

### Bedroom Three

2.82m x 3.83m (9'4" x 12'7")

### Bedroom Four

1.99m x 2.18m (6'6" x 7'2")

### Bathroom

1.97m x 1.76m (6'6" x 5'10")

### Second Floor Landing

0.99m x 1.10m (3'2" x 3'7")

### Master Bedroom

3.14m x 6.13m (10'4" x 20'1")

### Master Bedroom Ensuite

2.16m x 2.32m (7'1" x 7'7")

## Garage

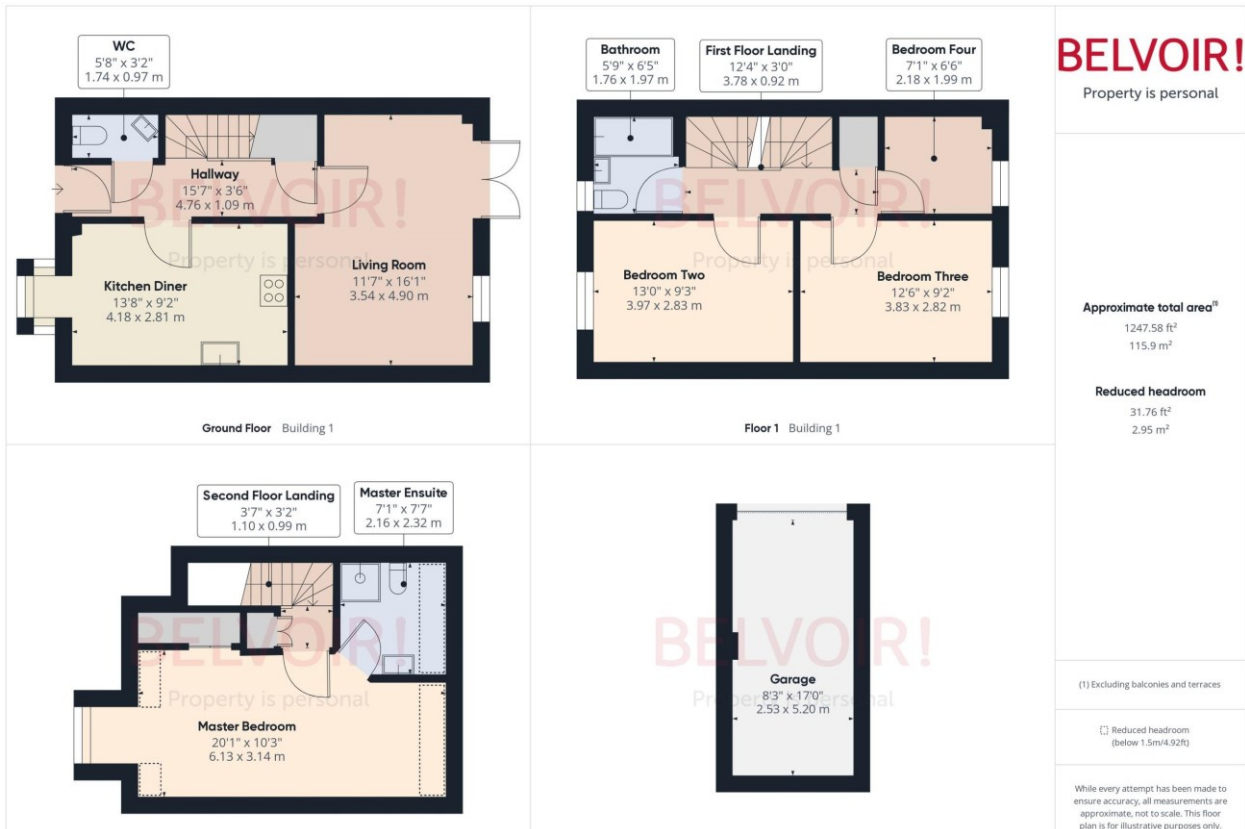
2.53m x 5.20m (8'4" x 17'1")



## More photographs



# Floorplan



# Map



[belvoir.co.uk/telford-estate-agents/](https://belvoir.co.uk/telford-estate-agents/)