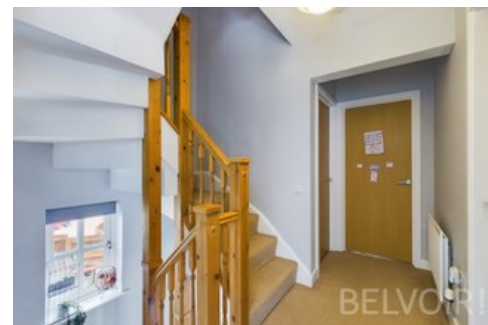




Green Moors, Lightmoor Village, Telford

OIRO £255,000



 5  2  1

Freehold | EPC rating: C

- Five Bedroom
- Sought After Location
- Close to Amenities & School

- Ideal Family Home
- Allocated Parking
- Close to historic Ironbridge

BELVOIR!

Property is personal

Email
telford@belvoir.co.uk

Phone
01952 258562

Description

Presenting Green Moors, an exceptional family residence nestled in the highly coveted Lightmoor Village, providing convenient access to the renowned attractions of Ironbridge and the varied amenities of Madeley and Telford.

Upon entry, you're welcomed by a reception hallway leading to a guest WC, a cozy lounge and a beautifully appointed kitchen/dining area, featuring double doors opening to a low-maintenance enclosed garden.

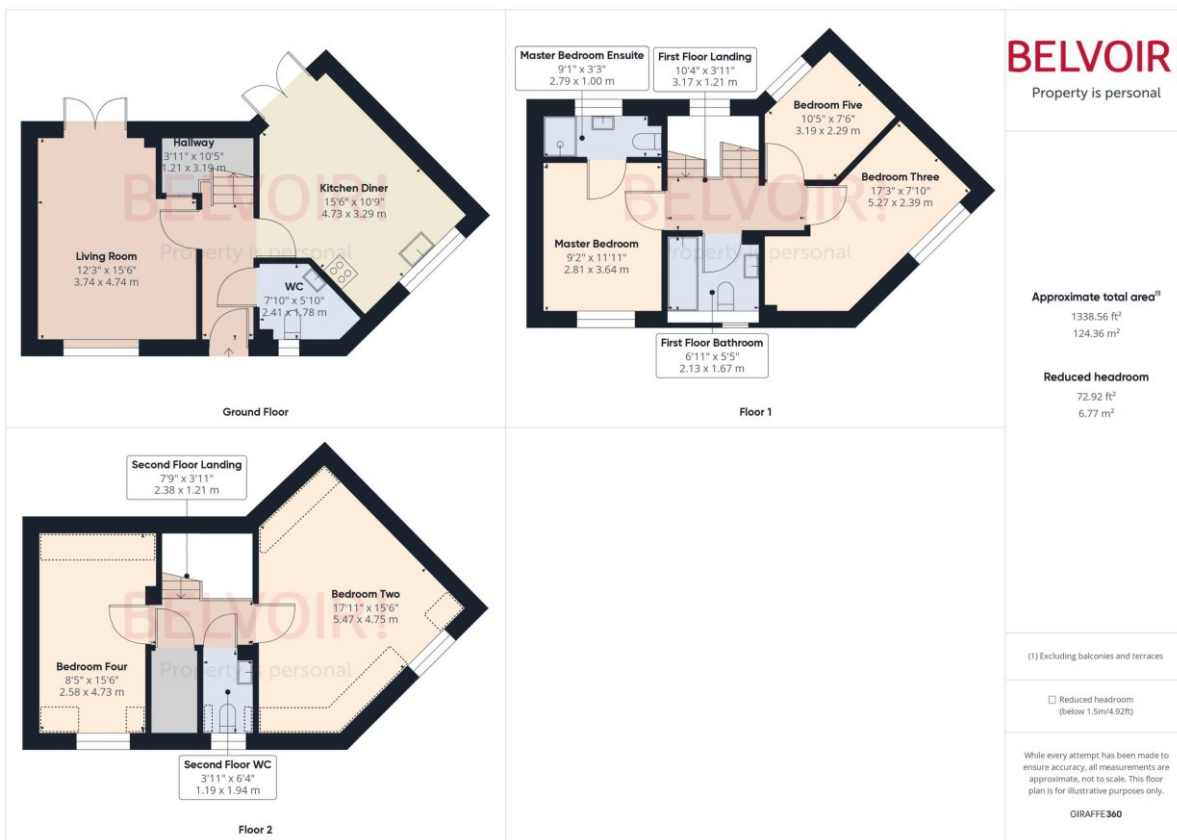
Ascending to the first floor, you'll find the master bedroom with en-suite and two bedrooms and a family bathroom, all designed with comfort in mind. The Second floor benefits from two further good sized bedrooms and WC.

Location is key, with Telford Town Centre, Telford Central Station, and the M54 motorway all within a ten-minute drive, ensuring seamless connectivity. Lightmoor is esteemed for its strong community ethos and proximity to quality schools, making it an ideal choice for families. Beyond its local attractions and amenities, the property is ideally positioned to embrace the vibrant lifestyle of Lightmoor, with its array of shops, eateries, and recreational facilities. The area is also well-served by reputable schools, further enhancing its appeal to families seeking both convenience and quality living.

Freehold / EPC Rating C / Council Tax Band C

As Advised by the vendors there is a monthly estate stewardship charge paid to Bournville Trust for £37.71.

Floorplan



Rooms

Hallway

1.21m x 3.19m (4'0" x 10'6")

Kitchen Diner

3.29m x 4.73m (10'10" x 15'6")

WC

1.78m x 2.41m (5'10" x 7'11")

Living Room

3.74m x 4.74m (12'4" x 15'7")

First Floor Landing

1.21m x 3.17m (4'0" x 10'5")

First Floor Bathroom

1.00m x 2.79m (3'4" x 9'2")

Master Bedroom

2.81m x 3.64m (9'2" x 11'11")

Master Bedroom Ensuite

1.00m x 2.79m (3'4" x 9'2")

Bedroom Two

4.75m x 5.47m (15'7" x 17'11")

Bedroom Three

2.39m x 5.27m (7'10" x 17'4")

Bedroom Four

2.58m x 4.73m (8'6" x 15'6")

Bedroom Five

2.29m x 3.19m (7'6" x 10'6")

Photographs



