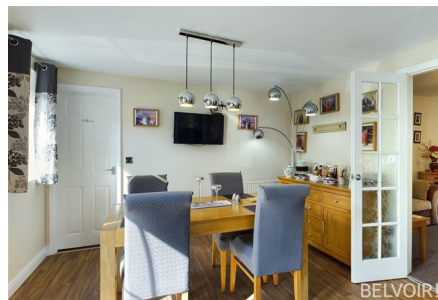


## Lincoln Road, Wrockwardine Wood, Telford, Shropshire TF2 6LN



**Price £380,000 Freehold**



Belvoir! are pleased to present to the market this stunning and impeccably presented three bedroom detached bungalow which has been beautifully improved and presented by the current owners.

The property is located in the highly sought after and established location of Wrockwardine Wood which has access to great local amenities. The property offers flexible family accommodation, featuring large kitchen/diner with a range of wall mounted and base units with soft close doors and built in double oven and hob, fridge and dishwasher, separate utility, living room with feature media wall and patio doors opening to the garden, L shaped hallway, three good sized bedrooms and re-fitted bathroom with a beautiful free standing slipper bath and separate shower.

The property also benefits from driveway parking for up to several cars and also benefits from a large detached garage with working pit and electric supply. A sizeable area for parking and a beautiful wrap around garden which is laid to lawn to the rear and has a paved area with pond.

FREEHOLD, EPC Rating D, Council Tax Band B

Internal inspection is recommended to appreciate the high standard of the property and fabulous location!

For more details or to book a viewing, please contact the Sale Team on 01952 248000



**Kitchen**  
18'4" x 11'4"



**Living Room**  
11'8" x 11'10"



**Living Room**



**Bathroom**  
6'2" x 5'2"



**Kitchen/Diner**



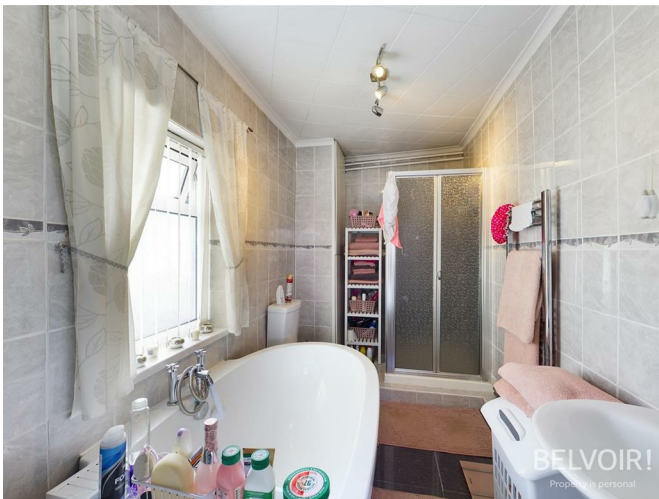
**Master Bedroom**  
18'5" x 9'8"



**Bedroom Two**  
7'11" x 12'7"



**Master Bedroom Ensuite with Bath**  
5'8" x 11'1"



**Bedroom Three**  
9'9" x 8'8"





# BELVOIR!

Belvoir Telford  
Grosvenor House, Suite 2.12, Central Park, Telford,  
Shropshire, TF2 9TW

Hallway  
9'10" x 3'9"



Garden



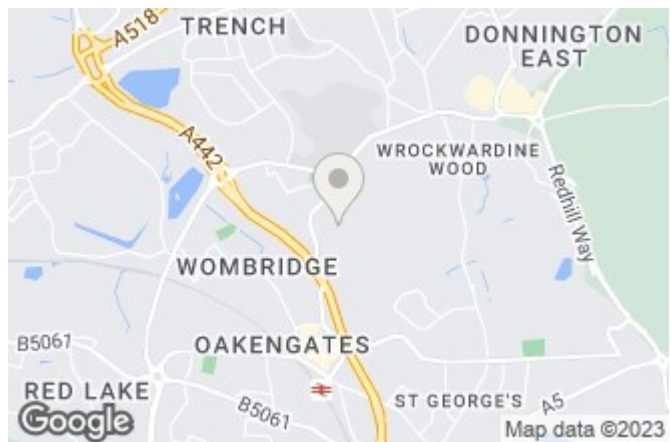
2nd Living Room  
8'7" x 9'2"



Garden

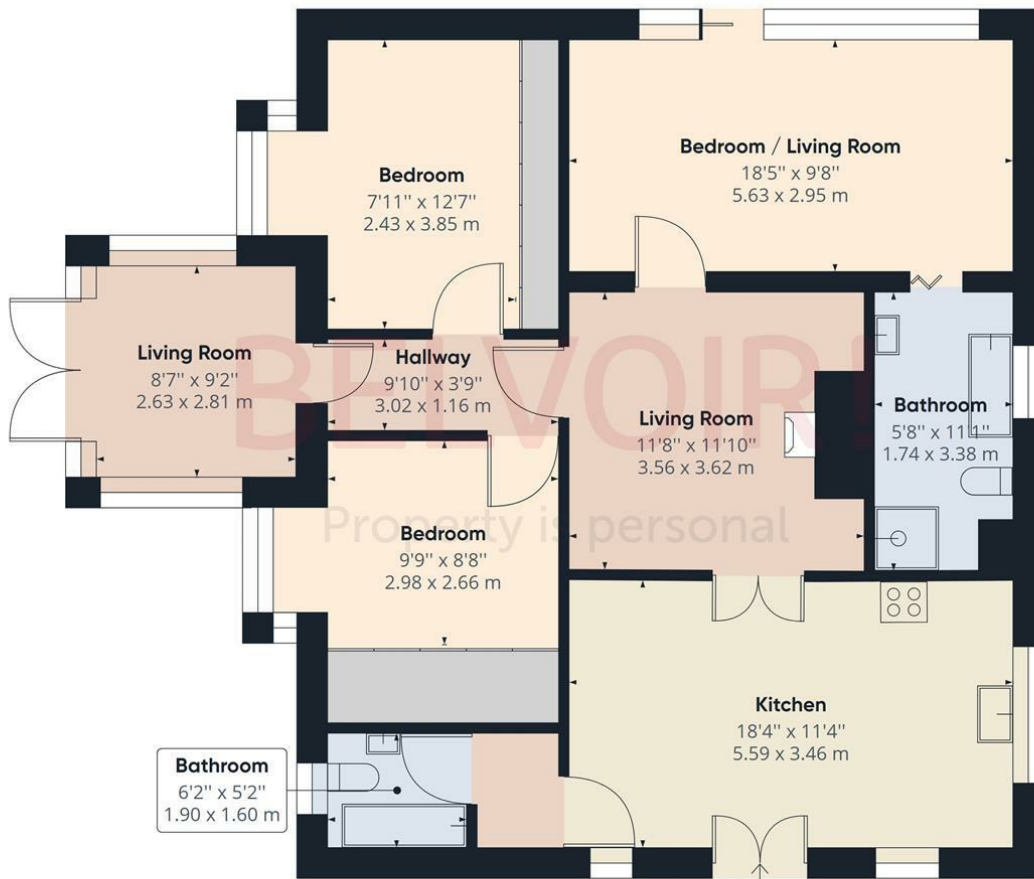


Garden



Call: 01952 248000

belvoir.co.uk



## BELVOIR!

Property is personal

### Approximate total area<sup>(1)</sup>

1048.20 ft<sup>2</sup>  
97.38 m<sup>2</sup>

(1) Excluding balconies and terraces

While every attempt has been made to ensure accuracy, all measurements are approximate, not to scale. This floor plan is for illustrative purposes only.

GIRAFFE360

These particulars are issued in good faith but do not constitute representations of fact or form part of any offer or contract. The matters referred to in these particulars should be independently verified by prospective buyers or tenants. Neither Belvoir nor any of its employees or agents has any authority to make or give any representation or warranty whatever in relation to this property.

