



**Dukes Way, St. Georges, Telford**

**£175,000**



 2  1  1

**Freehold | EPC rating: D**

- **\*\*\*NO UPWARDS CHAIN\*\*\***
- Two Bedrooms
- Easy access shower room

- Excellent Location
- Fitted Kitchen with a range of units

**BELVOIR!**

Property is personal

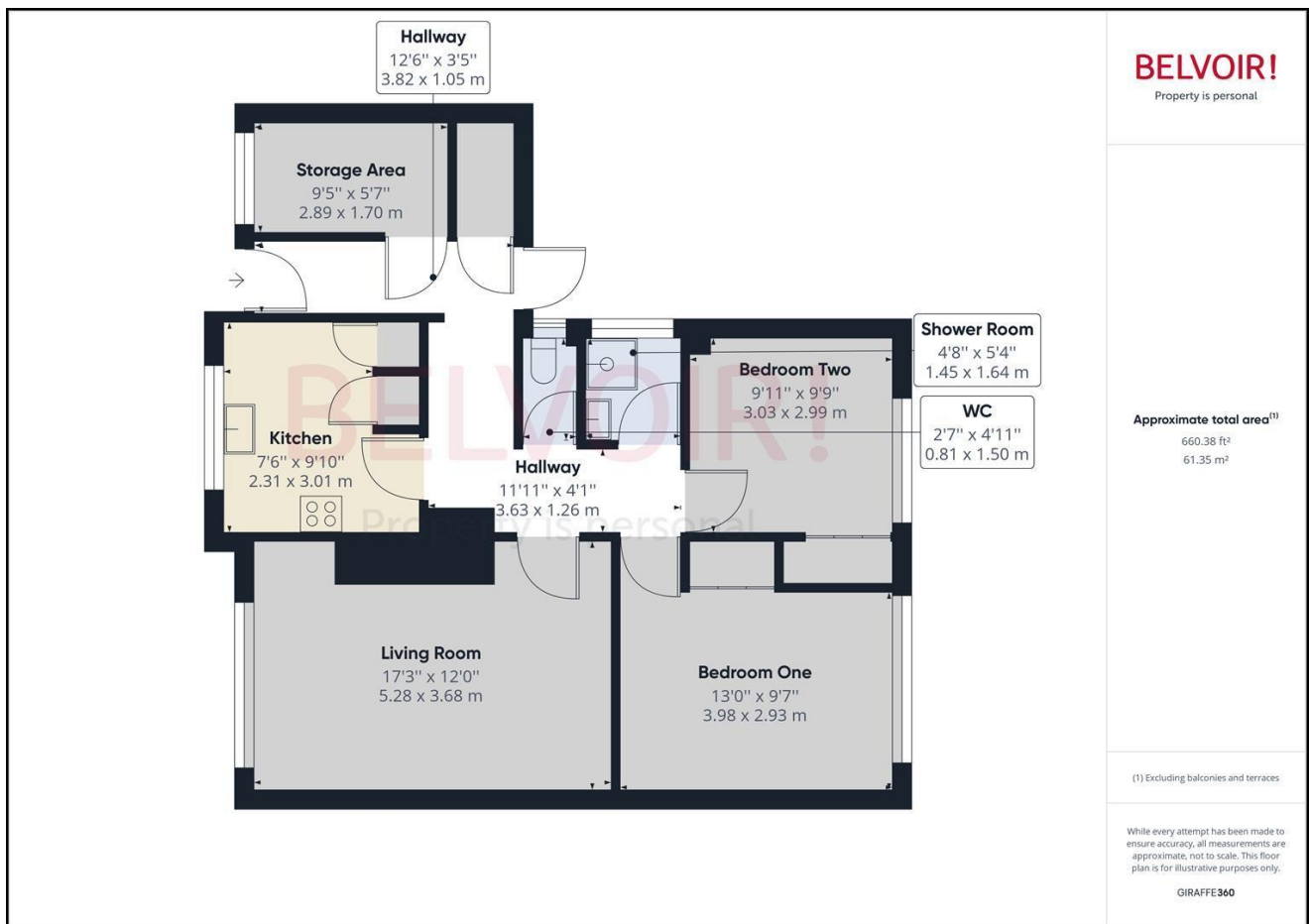
Email  
[telford@belvoir.co.uk](mailto:telford@belvoir.co.uk)

Phone  
**01952 258562**

## Description

Boasting a range of local amenities, including shops with Gower Street offering many social activities, this property is conveniently located within a short distance from Oakengates Centre and Train Station. Don't miss out on this fantastic opportunity to own a charming home in St Georges, with NO UPWARDS CHAIN. Step into a welcoming entrance hallway, leading you into the heart of the home. Enjoy the convenience of a well-designed fitted kitchen, perfect for cooking delicious meals and entertaining guests. Leading off the main hallway you will find a spacious Lounge and Dining Area offering ample space for comfortable living and dining, creating the ideal setting for relaxation. Offering two spacious cosy bedrooms, Shower Room and Separate WC. Lovely south facing private rear garden, enjoying plenty of sunshine embracing the tranquility of your very own private and enclosed rear gardens, a perfect escape to enjoy relaxing and gardening. There is Off Road Parking with the ease with the driveway at the front of the property. Another benefit of this delightful property is that there may be potential for extending this property depending on building permission, which provides you with the opportunity to add your personal touch and increase its value. Freehold EPC Rating TBC D: Council Tax Band B:

## Floorplan



## Rooms

### Hallway

3.82 x 1.05

### Kitchen

2.31 x 3.01

### Hallway

3.36 x 1.26

### WC

0.81 x 1.50

### Shower Room

1.45 x 1.64

### Bedroom Two

3.03 x 2.99

### Bedroom One

3.98 x 2.93

### Living Room

5.28 x 3.68

### Storage Area

2.89 x 1.70

### Garden

0.00m x 0.00m (0'0" x 0'0")

### Garden

0.00m x 0.00m (0'0" x 0'0")

### Kitchen

0.00m x 0.00m (0'0" x 0'0")

# Photographs



