









THAMES STREET

Sunbury-on-Thames



ON THE RIVER THAMES, WITH A MOORING AND A BOATHOUSE

Property for sale in Sunbury-on-Thames

			EPC
5	4	5	D
			

Local Authority: Spelthorne Borough Council
Council Tax band: G
Tenure: Freehold



DESCRIPTION

ON THE RIVER THAMES, WITH A MOORING AND A BOATHOUSE - A spectacular Grade II Listed home extensively renovated with just under 3000 sq ft in the main house and 670 sq ft in the boathouse. This captivating residence is a Grade II listed property that traces its origins to the early 18th Century underwent remodelling in the 19th Century and was subsequently subject to extensive renovations while preserving many of its distinctive architectural elements.

The layout of the accommodation is versatile and spans four floors. From the street level, a staircase ascends to the welcoming reception hall, a delightful space with a wood-burning stove and room for standalone pieces of furniture. Towards the rear, you'll find the splendid south-facing drawing room with three sets of French doors that offer captivating views of the gardens, with one set leading to a charming balcony. One end of the room features an open fireplace, and opposite stands a series of full height fitted bookcases. To the front, there's an enchanting, panelled study with a central fireplace, exposed floorboards, and a broad sash window. To the right of the reception hall lies another expansive 31-foot reception room that extends the depth of the house and features a large bay window and French doors that open on to the rear garden, filling the room with natural light that dances on the exposed floorboards.

Staircases from both the reception hall and long reception room descend down to the kitchen. On the lower ground floor, you'll discover a spacious open-plan kitchen/dining room with three additional sets of French doors that open on to the garden. The kitchen is equipped with custom-made units, complemented by an AGA, and provides ample space for a generous refectory table. At one end, there's a raised platform with a brick fireplace and a wood-burning stove. An inner hall leads to a cloakroom, utility room and walk-in pantry.



The first floor accommodates four double bedrooms and a family bathroom, accessible from the split-level landing. The principal bedroom is a magnificent space with garden and river views. It features an en suite bathroom and a separate walk-in wardrobe. Both the master bedroom en suite bathroom and the family bathroom on this level have recently been updated with four-piece white suites.

A staircase off the landing leads to the top floor, where you'll find an additional bedroom and an en suite shower room. The house benefits from underfloor heating and air conditioning throughout. Off the kitchen, there's a spacious patio and walled garden, with a bridge leading from the patio garden to a substantial paddock garden, all of which are exclusively associated with the property and house the renovated boathouse.

Boathouse: Situated on the riverbank, this detached Victorian timber-framed boathouse features power, lighting, running hot and cold water, and a slipway into the River Thames. The primary section of the boathouse encompasses a generously sized open-plan kitchen, dining, and reception area with a fitted kitchen, a log burner, and a separate shower and WC. The boathouse also includes a first floor with windows on the east and west sides and French doors to the south, providing panoramic river views and access to a balcony. The lower ground floor has been configured as a small gym with double doors that open to a view of the river.

LOCATION

Sunbury On Thames is an historic village dating back to the Bronze Age situated on the banks of the River Thames 3 miles from Hampton Court Palace it is well located for access to the M3, M25, Heathrow Airport.

Local amenities include several charming shops, restaurants and pubs in Lower Sunbury with more comprehensive shopping available at Sunbury Cross and the nearby towns of Staines (approx 5 miles) and Kingston-upon-Thames (approx 6 miles).

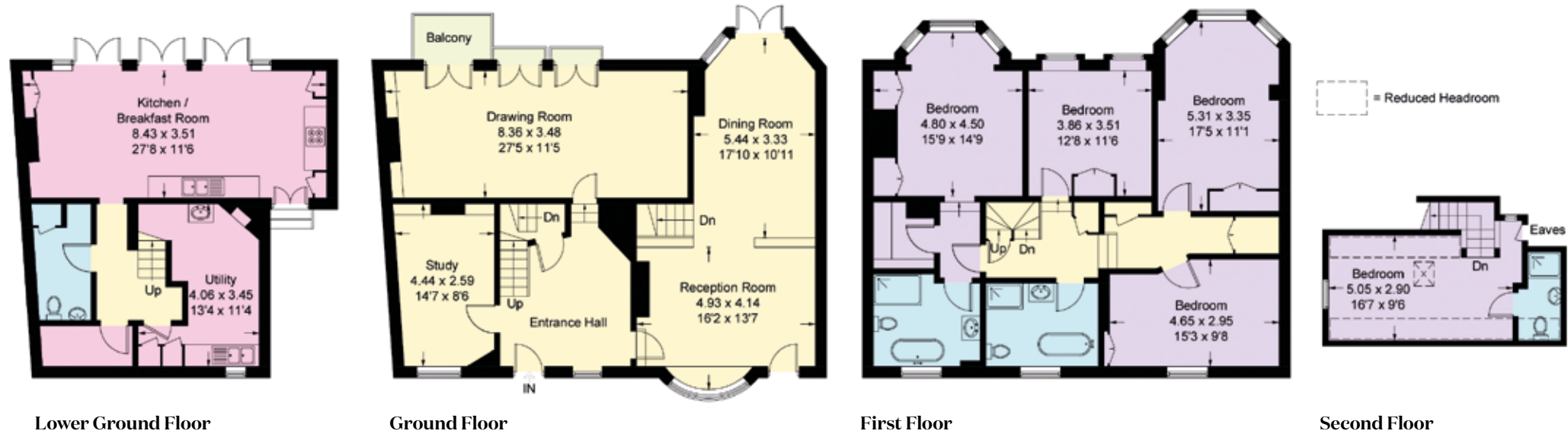
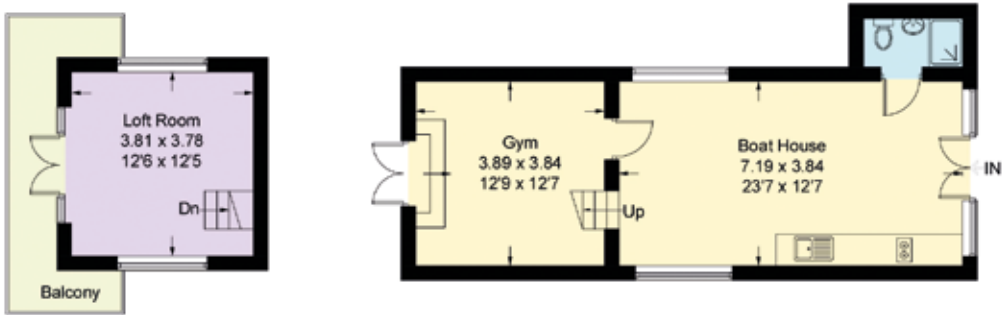




Sunbury Station provides regular access direct to London Waterloo in approximately 50 minutes and Walton mainline station in approximately 26 minutes. Heathrow airport is located approximately 10 miles from Sunbury. Leisure activities include boating on the River Thames, racing at Kempton Park and sailing at Queen Mary’s reservoir. The local area is served by an excellent selection of both state and private schools.



- Reception
- Bedroom
- Bathroom
- Kitchen/Utility
- Storage
- Outside



Approximate Gross Internal Area = 272.5 sq m / 2934 sq ft
(Including Reduced Headroom)
Boat House = 62.2 sq m / 670 sq ft

This plan is for layout guidance only. Not drawn to scale unless stated. Windows and door openings are approximate. Whilst every care is taken in the preparation of this plan, please check all dimensions, shapes and compass bearings before making any decisions reliant upon them.

I would be delighted
to tell you more.

Matthew Scott
01932 548001
matthew.scott@knightfrank.com

Knight Frank Weybridge
20 High Street, Weybridge
KT13 8AB

knightfrank.co.uk

Your partners in property

1. Particulars: These particulars are not an offer or contract, nor part of one. You should not rely on statements given by Knight Frank in the particulars, by word of mouth or in writing ("information") as being factually accurate about the property, its condition or its value. Neither Knight Frank nor any joint agent has any authority to make any representations about the property, and accordingly any information given is entirely without responsibility on the part of Knight Frank. 2. Material Information: Please note that the material information is provided to Knight Frank by third parties and is provided here as a guide only. While Knight Frank has taken steps to verify this information, we advise you to confirm the details of any such material information prior to any offer being submitted. If we are informed of changes to this information by the seller or another third party, we will use reasonable endeavours to update this as soon as practical. 3. Photos, Videos etc: The photographs, property videos and virtual viewings etc. show only certain parts of the property as they appeared at the time they were taken. Areas, measurements and distances given are approximate only. 4. Regulations etc: Any reference to alterations to, or use of, any part of the property does not mean that any necessary planning, building regulations or other consent has been obtained. A buyer must find out by inspection or in other ways that these matters have been properly dealt with and that all information is correct. 5. Fixtures and fittings: A list of the fitted carpets, curtains, light fittings and other items fixed to the property which are included in the sale (or may be available by separate negotiation) will be provided by the Seller's Solicitors. 6. VAT: The VAT position relating to the property may change without notice. 7. To find out how we process Personal Data, please refer to our Group Privacy Statement and other notices at <https://www.knightfrank.com/legals/privacy-statement>.

Particulars dated April 2025. Photographs and videos dated April 2025. All information is correct at the time of going to print. Knight Frank is the trading name of Knight Frank LLP. Knight Frank LLP is a limited liability partnership registered in England and Wales with registered number OC305934. Our registered office is at 55 Baker Street, London W1U 8AN. We use the term 'partner' to refer to a member of Knight Frank LLP, or an employee or consultant. A list of members names of Knight Frank LLP may be inspected at our registered office. If you do not want us to contact you further about our services then please contact us by either calling 020 3544 0692, email to marketing.help@knightfrank.com or post to our UK Residential Marketing Manager at our registered office (above) providing your name and address.