





ALBURY ROAD
Hersham, Walton-on-Thames



PROPERTY FOR SALE IN BURWOOD PARK.

Introducing Virginia Lodge, a remarkable residence positioned centrally within the exclusive Burwood Park Estate.

			EPC
6	4	3	D
			

Local Authority: Elmbridge Borough Council
Council Tax band: H
Tenure: Freehold

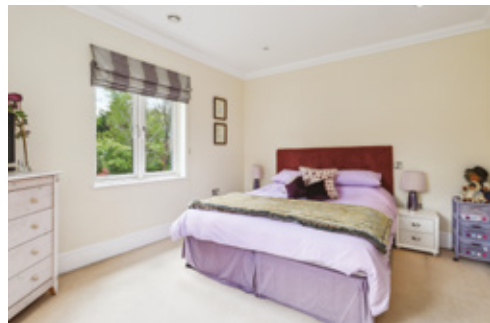




DESCRIPTION

This elegant home offers over 4,800 sq ft of beautifully appointed interiors, designed with luxurious family living in mind. Approached through a gated entrance framed by mature hedging, the property makes an immediate impression. The grand vestibule opens into a light-filled and spacious layout featuring an open-plan kitchen/dining room perfect for entertaining, a cozy dual-aspect family room with feature gas fireplace, a study, and utility room. The six bedrooms include a magnificent principal suite complete with its own dressing room, spa-like en suite, and Juliet balcony overlooking the manicured rear garden.

The home further benefits from underfloor heating and TV/data points throughout, with a self-contained 2-bedroom annexe ideal for guests, au pair, or multi-generational living.



Outdoors is a true private sanctuary: a swimming pool, pool house with kitchenette, shower and changing room, and a large lawn embraced by mature trees. The double garage with automated doors and ample driveway parking completes this outstanding family residence. Discreetly set within 0.563 acres and the safety of Burwood Park, this is a rare opportunity to establish your family in a community synonymous with prestige, privacy, and lifestyle longevity.

LOCATION

Burwood Park is a private residential estate on the outskirts of Walton-on-Thames and close to Weybridge. Access to the park is through a security entrance with ANPR and and the other entrances have automatic bollards. Shops catering for day-to-day needs are available in Walton-on-Thames and Weybridge, whilst the towns of Kingston Upon Thames and Guildford offer more extensive amenities. The local area benefits from a number of excellent restaurants and pubs.

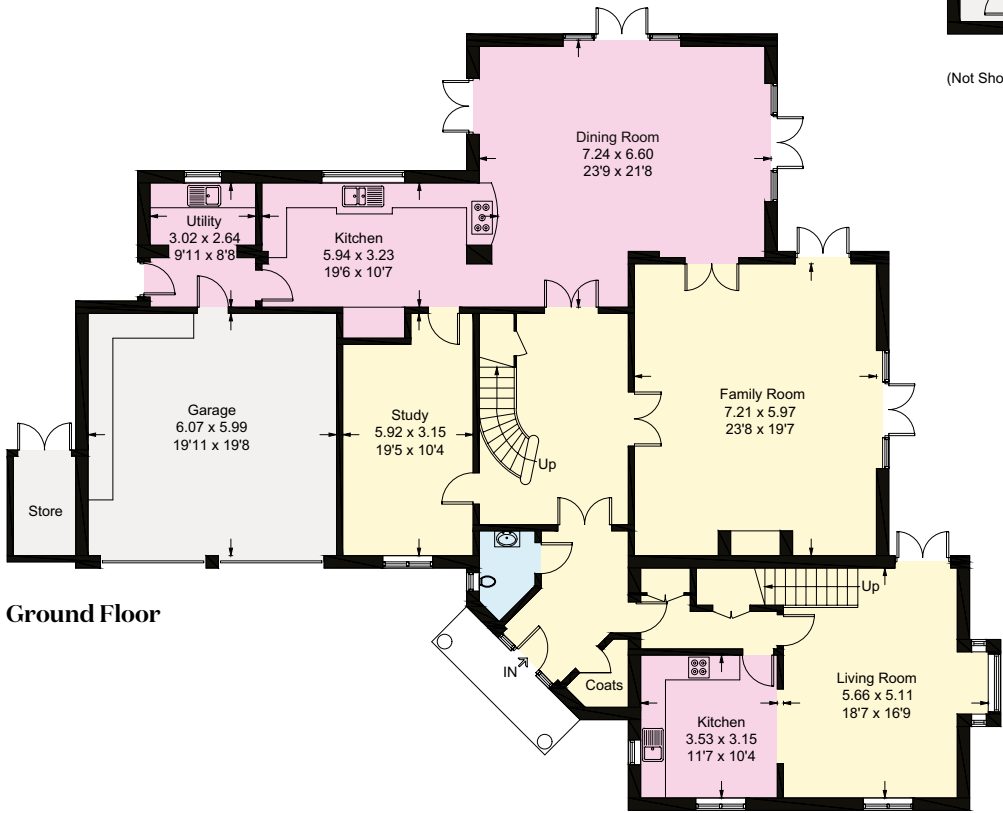
The area offers some excellent independent, state and international schools, including ACS Cobham International School, St. George’s School, Notre Dame Preparatory School and Shrewsbury House Preparatory School.

Outstanding leisure facilities are nearby including superb golf at Burhill, Wisley and Beaverbrook and other private leisure pursuits can be found at St. George’s Hill Tennis Club, David Lloyd Fitness Centre, Foxhills Country Club and the Weybridge Health Centre.

Direct access to the A3 and the M25 (junction 10) is just under three miles away, and there is a main line rail service to London Waterloo (23 minutes). London Heathrow and Gatwick airports are both within easy reach. Walton station 1.3 miles, Walton-on-Thames 2.1 miles, A3 2.9 miles, M25 (J10) 4.6 miles (All distances are approximate).



- Reception
- Bedroom
- Bathroom
- Kitchen/Utility
- Storage
- Outside



Approximate Gross Internal Area = 454.0 sq m / 4887 sq ft
(Including Reduced Headroom / Eaves / Garage & Excluding Void)
Pool House = 31.4 sq m / 338 sq ft
Total = 485.4 sq m / 5225 sq ft



This plan is for layout guidance only. Not drawn to scale unless stated. Windows and door openings are approximate. Whilst every care is taken in the preparation of this plan, please check all dimensions, shapes and compass bearings before making any decisions reliant upon them.

We would be delighted
to tell you more.

Tom Barham
01932 548019
thomas.barham@knightfrank.com

Knight Frank Weybridge
20 High Street, Weybridge
KT13 8AB

Matthew Scott
01932 548001
matthew.scott@knightfrank.com

knightfrank.co.uk

Your partners in property

1. Particulars: These particulars are not an offer or contract, nor part of one. You should not rely on statements given by Knight Frank in the particulars, by word of mouth or in writing ("information") as being factually accurate about the property, its condition or its value. Neither Knight Frank nor any joint agent has any authority to make any representations about the property, and accordingly any information given is entirely without responsibility on the part of Knight Frank. 2. Material Information: Please note that the material information is provided to Knight Frank by third parties and is provided here as a guide only. While Knight Frank has taken steps to verify this information, we advise you to confirm the details of any such material information prior to any offer being submitted. If we are informed of changes to this information by the seller or another third party, we will use reasonable endeavours to update this as soon as practical. 3. Photos, Videos etc: The photographs, property videos and virtual viewings etc. show only certain parts of the property as they appeared at the time they were taken. Areas, measurements and distances given are approximate only. 4. Regulations etc: Any reference to alterations to, or use of, any part of the property does not mean that any necessary planning, building regulations or other consent has been obtained. A buyer must find out by inspection or in other ways that these matters have been properly dealt with and that all information is correct. 5. Fixtures and fittings: A list of the fitted carpets, curtains, light fittings and other items fixed to the property which are included in the sale (or may be available by separate negotiation) will be provided by the Seller's Solicitors. 6. VAT: The VAT position relating to the property may change without notice. 7. To find out how we process Personal Data, please refer to our Group Privacy Statement and other notices at <https://www.knightfrank.com/legals/privacy-statement>.

Particulars dated May 2025. Photographs and videos dated April 2025. All information is correct at the time of going to print. Knight Frank is the trading name of Knight Frank LLP. Knight Frank LLP is a limited liability partnership registered in England and Wales with registered number OC305934. Our registered office is at 55 Baker Street, London W1U 8AN. We use the term 'partner' to refer to a member of Knight Frank LLP, or an employee or consultant. A list of members names of Knight Frank LLP may be inspected at our registered office. If you do not want us to contact you further about our services then please contact us by either calling 020 3544 0692, email to marketing.help@knightfrank.com or post to our UK Residential Marketing Manager at our registered office (above) providing your name and address.