





HEATH VIEW


St. Georges Avenue, Weybridge


PROPERTY FOR SALE IN WEYBRIDGE

This apartment offers 504 sq ft of generous living space with luxurious finishes and state-of-the-art amenities.


1


1


1


C

Local Authority: Elmbridge Borough Council
Council Tax band: C
Tenure: Leasehold



DESCRIPTION

The entrance takes you through to the spacious open plan living/kitchen/dining. The contemporary handleless kitchen features Quartz worktops, LED lighting under the wall cabinets, integrated appliances and luxury Oak vinyl plank flooring.



There is a utility/storage cupboard off of the hallway. The bathroom is fitted with a matt black heated towel rail, a wall-mounted vanity unit with an integrated basin and a fitted mirror with LED lighting.

This home also has the added convenience of a full video door entry system.

LOCATION

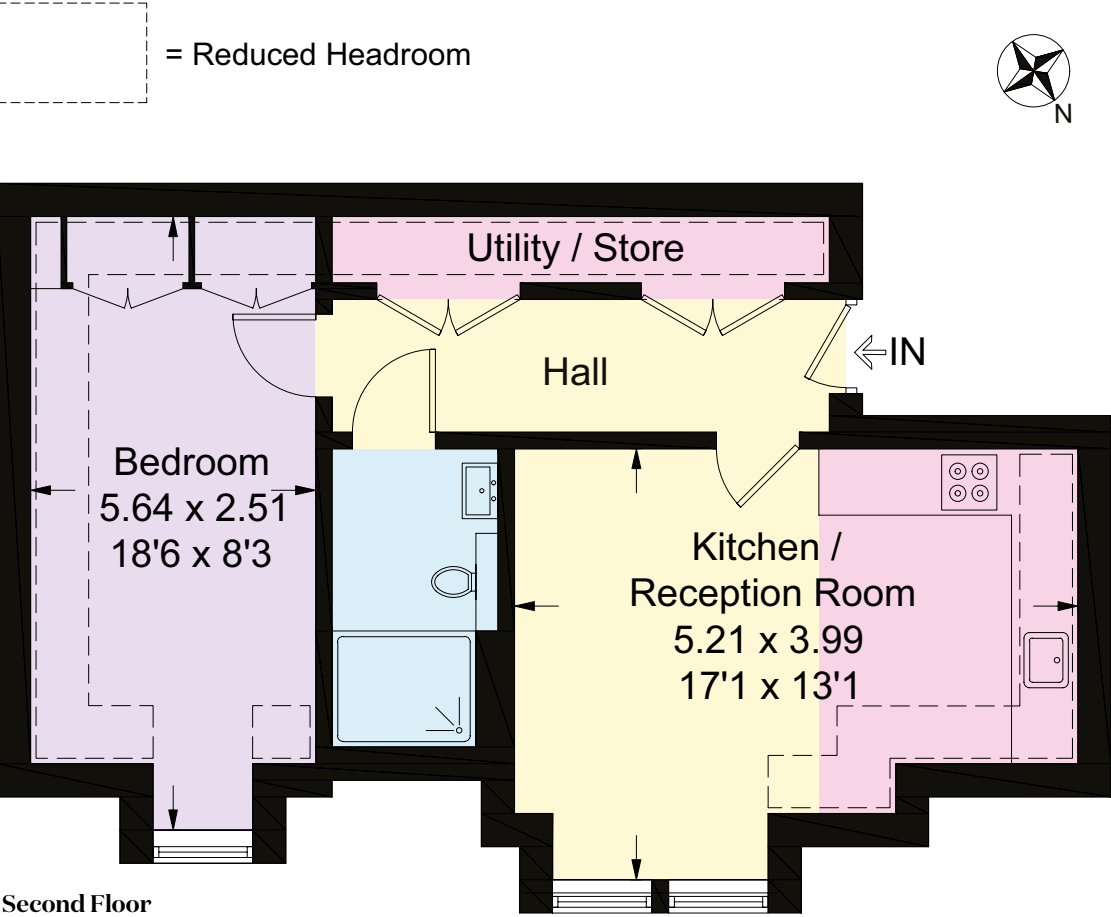
Situated in St. Georges Avenue, Weybridge, this apartment enjoys a prime location with excellent proximity to schools, Queens Road and Weybridge High Streets and transportation links. Weybridge itself is known for its upscale living and tranquil surroundings, offering a perfect balance between urban convenience and suburban charm.

The property is well located 0.3 miles from Weybridge train station with excellent links to London Waterloo.

Weybridge’s town is conveniently located along with the village cricket green and Queens Road area with its wide range of boutique shops and restaurants. The town centre offering everyday conveniences including Waitrose and a number of café’s, pubs and restaurants along with the River Thames.

The town has a number of leisure pursuits available including two health clubs, Weybridge Health Club and David Lloyd along with St Georges Hill Tennis and Golf Club, Burhill Golf Club, Mercedes Benz World and The Brooklands Museum.

There are a number of excellent schools in the area including St. George’s College and Junior, Feltonfleet, Notre Dame as well as the state secondary school, Heathside and several local primary school.



Approximate Gross Internal Area =
46.8 sq m / 504 sq ft (Including Reduced Headroom)

This plan is for layout guidance only. Not drawn to scale unless stated. Windows and door openings are approximate. Whilst every care is taken in the preparation of this plan, please check all dimensions, shapes and compass bearings before making any decisions reliant upon them.

I would be delighted
to tell you more.

Matthew Scott
01932 548001
matthew.scott@knightfrank.com

Knight Frank Weybridge
20 High Street, Weybridge
KT13 8AB

[knightfrank.co.uk](https://www.knightfrank.co.uk)

Your partners in property

Important Notice 1. Particulars: These particulars are not an offer or contract, nor part of one. You should not rely on statements given by Knight Frank in the particulars, by word of mouth or in writing ("information") as being factually accurate about the property, its condition or its value. Neither Knight Frank nor any joint agent has any authority to make any representations about the property, and accordingly any information given is entirely without responsibility on the part of Knight Frank. 2. Material Information: Please note that the material information is provided to Knight Frank by third parties and is provided here as a guide only. While Knight Frank has taken steps to verify this information, we advise you to confirm the details of any such material information prior to any offer being submitted. If we are informed of changes to this information by the seller or another third party, we will use reasonable endeavours to update this as soon as practical. 3. Photos, Videos etc: The photographs, property videos and virtual viewings etc. show only certain parts of the property as they appeared at the time they were taken. Areas, measurements and distances given are approximate only. 4. Regulations etc: Any reference to alterations to, or use of, any part of the property does not mean that any necessary planning, building regulations or other consent has been obtained. A buyer must find out by inspection or in other ways that these matters have been properly dealt with and that all information is correct. 5. Fixtures and fittings: A list of the fitted carpets, curtains, light fittings and other items fixed to the property which are included in the sale (or may be available by separate negotiation) will be provided by the Seller's Solicitors. 6. VAT: The VAT position relating to the property may change without notice. 7. To find out how we process Personal Data, please refer to our Group Privacy Statement and other notices at <https://www.knightfrank.com/legals/privacy-statement>.

Particulars dated March 2025. Photographs and videos dated March 2025. All information is correct at the time of going to print. Knight Frank is the trading name of Knight Frank LLP. Knight Frank LLP is a limited liability partnership registered in England and Wales with registered number OC305934. Our registered office is at 55 Baker Street, London W1U 8AN. We use the term 'partner' to refer to a member of Knight Frank LLP, or an employee or consultant. A list of members names of Knight Frank LLP may be inspected at our registered office. If you do not want us to contact you further about our services then please contact us by either calling 020 3544 0692, email to marketing.help@knightfrank.com or post to our UK Residential Marketing Manager at our registered office (above) providing your name and address. Brochure by [wordperfectprint.com](https://www.wordperfectprint.com)