



South Ridge, Weybridge





Property for sale in St. Georges Hill, Weybridge.

Entry to the property is through a wide and bright hallway, with a downstairs WC and coats cupboard.



4



2



4



1

EPC

D

Tenure

Freehold

Local Authority

Elmbridge Borough Council

Council Tax

Band H



From the main entranceway there is access to the kitchen/diner, large living room and a snug or playroom. The kitchen is a great size with a large central island and dining area, it has two sets of French doors that open out onto the rear garden. The second reception room could be used flexibly as either a study or playroom.

There are four bedrooms across the first floor; a large principal suite, with a built-in wardrobe and en suite shower room. Three further double bedrooms and a family bathroom.





Externally, the private rear garden is ideal for entertaining with a several distinct entertaining spaces and a heated swimming pool. The front garden has driveway parking as well as access to the garage.

Location

St George's Hill is set on approximately 900 acres and features a private championship-standard 18-hole golf course, 9-hole course and a separate private tennis and squash club.

Close to the centre of Weybridge, the greens and fairways of St George's Hill Golf Club meander through the Estate, whilst the Lawn Tennis, Squash and Croquet Club offers luxurious fitness and an indoor swimming pool. The Estate provides controlled gated security and privacy, offering an ideal community location.

The A3 is a short driving distance giving access to London and the M25 which, in turn, leads to the national motorway network as well as Heathrow and Gatwick airports.

Weybridge and Walton mainline rail stations are conveniently located nearby.



Distances

Weybridge 3 miles, Heathrow 13 miles, M25 (J10) 4 miles,
Central London 24 miles (All distances are approximate)



Approximate Gross Internal Floor Area

Main House 2069 sq. ft / 192.20 sq. m

Garage 282 sq. ft / 26.17 sq. m

Outbuilding 212 sq. ft / 19.73 sq. m

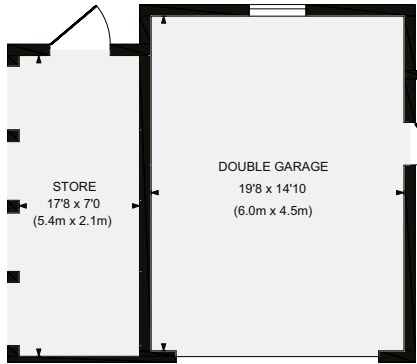
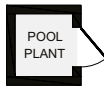
Total 2563 sq. ft / 238.10 sq. m

This plan is for guidance only and must not be relied upon as a statement of fact. Attention is drawn to the Important Notice on the last page of the text of the Particulars.

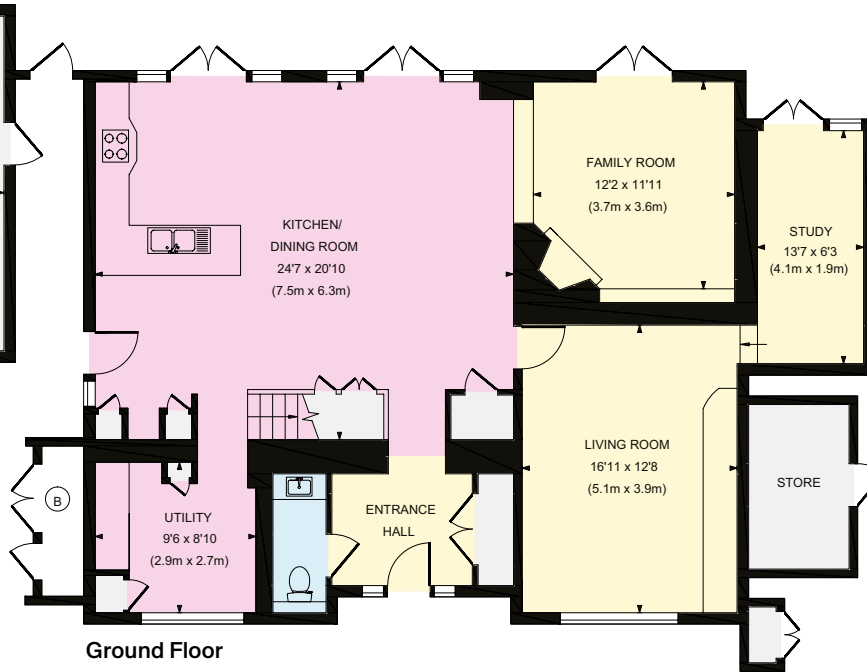
- Reception
- Bedroom
- Bathroom
- Kitchen/Utility
- Storage
- Outside



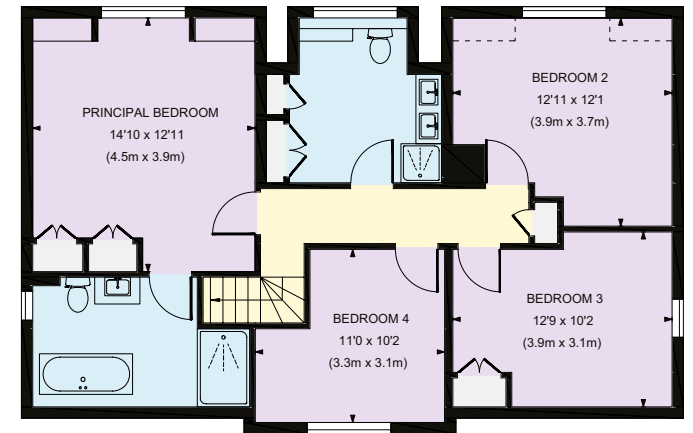
Outbuilding



Garage



Ground Floor



First Floor

Knight Frank Weybridge

20 High Street

Weybridge

KT13 8AB

knightfrank.co.uk

I would be delighted to tell you more

Matthew Scott

01932 548001

matthew.scott@knightfrank.com

Natalie Berthiaud

01932 548002

natalie.berthiaud@knightfrank.com



Fixtures and fittings: A list of the fitted carpets, curtains, light fittings and other items fixed to the property which are included in the sale (or may be available by separate negotiation) will be provided by the Seller's Solicitors.

Important Notice: 1. Particulars: These particulars are not an offer or contract, nor part of one. You should not rely on statements by Knight Frank LLP in the particulars or by word of mouth or in writing ("information") as being factually accurate about the property, its condition or its value. Neither Knight Frank LLP nor any joint agent has any authority to make any representations about the property, and accordingly any information given is entirely without responsibility on the part of the agents, seller(s) or lessor(s). 2. Photos, Videos etc: The photographs, property videos and virtual viewings etc. show only certain parts of the property as they appeared at the time they were taken. Areas, measurements and distances given are approximate only. 3. Regulations etc: Any reference to alterations to, or use of, any part of the property does not mean that any necessary planning, building regulations or other consent has been obtained. A buyer or lessee must find out by inspection or in other ways that these matters have been properly dealt with and that all information is correct. 4. VAT: The VAT position relating to the property may change without notice. 5. To find out how we process Personal Data, please refer to our Group

Privacy Statement and other notices at <https://www.knightfrank.com/legals/privacy-statement>.

Particulars dated September 2024. Photographs and videos dated September 2024.

All information is correct at the time of going to print. Knight Frank is the trading name of Knight Frank LLP. Knight Frank LLP is a limited liability partnership registered in England and Wales with registered number OC305934. Our registered office is at 55 Baker Street, London W1U 8AN. We use the term 'partner' to refer to a member of Knight Frank LLP, or an employee or consultant. A list of members names of Knight Frank LLP may be inspected at our registered office. If you do not want us to contact you further about our services then please contact us by either calling 020 3544 0692, email to marketing.help@knightfrank.com or post to our UK Residential Marketing Manager at our registered office (above) providing your name and address. Brochure by wordperfectprint.com