



**MILES ESTATE AGENTS**

**21 Burge Meadow Cotford St. Luke  
Taunton TA4 1QN Offers over £385,000**





A superbly presented and spacious 4 double bedroom detached house with 2 receptions and lovely enclosed garden in this popular modern village 5 miles North West of Taunton within Kingsmead School catchment area. Master bedroom with vaulted ceiling and en suite, single garage and off road parking. Early viewing recommended. Freehold Council Tax band E EPC : C.







## Features:

- Entrance hall
- Spacious sitting room
- Separate dining room
- Kitchen/breakfast room
- Utility & cloakroom
- Master bedroom with en suite
- 3 further double bedrooms
- Family bathroom
- Enclosed garden
- Single garage & off road parking
- Freehold
- Council Tax Band E
- EPC : C





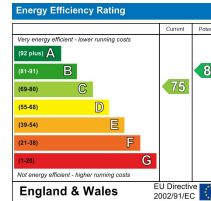
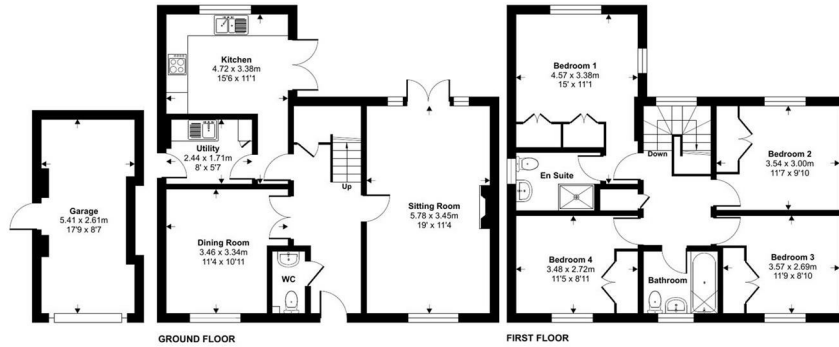
## Burge Meadow, Cotford St. Luke, Taunton, TA4

Approximate Area = 1312 sq ft / 121.8 sq m

Garage = 146 sq ft / 13.5 sq m

Total = 1458 sq ft / 135.3 sq m

For identification only - Not to scale



Floor plan produced in accordance with RICS Property Measurement 2nd Edition, incorporating International Property Measurement Standards (IPMS Residential). © richrecom 2025. Produced for Miles Estate Agents Limited T/A Miles Estate Agents, REF: 1342789



Viewings strictly through the selling agents:

**Miles Estate Agents**

2 Piffin Lane, Bishops Lydeard, Taunton,  
Somerset, TA4 3AS

**Tel: 01823 470 500**

[lydeard@milesestateagents.co.uk](mailto:lydeard@milesestateagents.co.uk)

[www.milesestateagents.co.uk](http://www.milesestateagents.co.uk)



**rightmove**

**OnTheMarket.com**

**MILES ESTATE AGENTS**



**BEST**

ESTATE AGENT GUIDE  
2019 : EXCEPTIONAL

**SALES**