



**MILES ESTATE AGENTS**

**6 Court Hill Hovelands  
Taunton TA1 4SX £495,000**



A well presented, extended and modernised 4 double bedroom detached house in this much favoured elevated location within Castle School catchment area. Superb sitting room with woodburning stove, spacious refitted kitchen/dining room, study/snug, utility, 2 shower rooms, garage and lots of parking. Early viewing of this fabulous family home is highly recommended. Freehold Council Tax Band E EPC : D



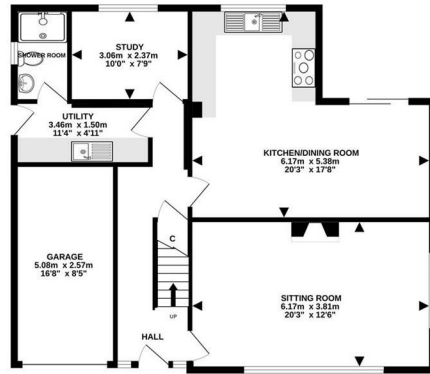


## Features:

- Entrance Hall
- Superb Sitting Room with Woodburning Stove
- Spacious Refitted Kitchen/Dining Room
- Useful Study / Snug
- Utility Room
- Shower Room
- 4 Double Bedrooms
- Further Refitted Shower Room
- Single Garage & Off Road Parking for Several Cars
- Enclosed Tiered Garden
- Freehold
- Council Tax Band E
- EPC : D

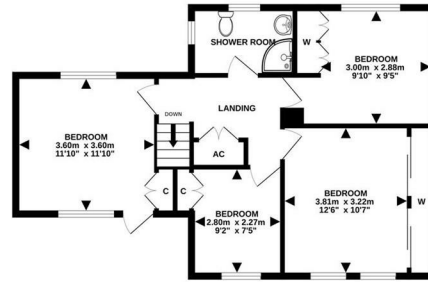


GROUND FLOOR  
89.2 sq.m. (960 sq.ft.) approx.



TOTAL FLOOR AREA: 146.8 sq.m. (1,580 sq.ft.) approx.  
Made with Metropix ©2023

1ST FLOOR  
57.6 sq.m. (620 sq.ft.) approx.



Energy Efficiency Rating		Current	Potential
Very energy efficient - lower running costs			
(82 plus)	A		81
(81-81)	B		
(80-80)	C		
(79-79)	D		
(78-78)	E		
(77-77)	F		
(76-76)	G		
Not energy efficient - higher running costs			
England & Wales			
EU Directive 2002/91/EC			



Viewings strictly through the selling agents:

**Miles Estate Agents**

2 Piffin Lane, Bishops Lydeard, Taunton,  
Somerset, TA4 3AS

**Tel: 01823 470 500**

[lydeard@milesestateagents.co.uk](mailto:lydeard@milesestateagents.co.uk)

[www.milesestateagents.co.uk](http://www.milesestateagents.co.uk)

**rightmove**

**OnTheMarket.com**

**MILES ESTATE AGENTS**

