



MILES ESTATE AGENTS

**6 Hamber Lea Bishops Lydeard
Taunton TA4 3NJ £375,000**



A spacious and well presented 4 double bedroom detached house set in lovely mature gardens close to the extensive amenities of this ever popular Quantock village within Kingsmead catchment area. On the market for the first time since it was built in 1975 and now with some scope for modernisation, the house is immediately available with NO ONWARD CHAIN. Generous sitting room, useful utility/workshop, garage and off road parking - early viewing is highly recommended. Freehold Council Tax Band E EPC : D





Features:

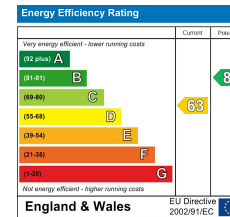
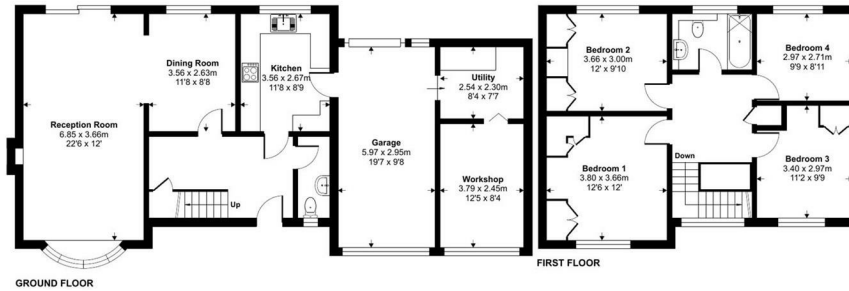
- Reception hall
- Spacious sitting room
- Separate dining room
- Good size kitchen
- Cloakroom
- Useful utility & workshop
- 4 double bedrooms
- Refitted bathroom
- Lovely mature enclosed gardens
- Garage & off road parking
- NO ONWARD CHAIN
- Freehold
- EPC : D
- Council Tax Band E



Hamber Lea, Taunton, TA4

Approximate Area = 1302 sq ft / 120.9 sq m
Garage = 368 sq ft / 34.2 sq m
Total = 1670 sq ft / 155.1 sq m

For identification only - Not to scale



Floor plan produced in accordance with RICS Property Measurement 2nd Edition, incorporating International Property Measurement Standards (IPMS Residential). Produced for Miles Alexander Limited T/A Miles Estate Agents. REF: 1289289 © richroom 2025.



Viewings strictly through the selling agents:

Miles Estate Agents

2 Piffin Lane, Bishops Lydeard, Taunton,
Somerset, TA4 3AS

Tel: 01823 470 500

lydeard@milesestateagents.co.uk

www.milesestateagents.co.uk

rightmove

OnTheMarket.com

MILES ESTATE AGENTS



BEST
ESTATE AGENT GUIDE
2019 : EXCEPTIONAL

SALES