



**MILES ESTATE AGENTS**

**94 Burge Meadow Cotford St. Luke  
Taunton TA4 1QW £260,000**





A superb, upgraded 3 bedroom end terrace modern house presented in Show Home condition throughout with refitted kitchen, crisp neutral decor and new carpets in this ever popular village close to the Quantock Hills within good school catchment areas. Lovely south facing landscaped garden and part converted garage providing useful work from home space together with off road parking for 2 cars. Early viewing highly recommended. Freehold Council Tax Band C EPC : C







## Features:

- Entrance hall
- Superb refitted kitchen/breakfast room
- Sitting/dining room
- Cloakroom
- Principal bedroom with en suite
- 2 further bedrooms
- Family bathroom
- Lovely south facing enclosed landscaped garden
- Part converted garage - useful office/store
- Off road parking
- NO ONWARD CHAIN
- Freehold
- Council Tax Band C
- EPC : C





## Burge Meadow, Cotford St. Luke, Taunton, TA4



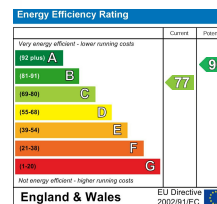
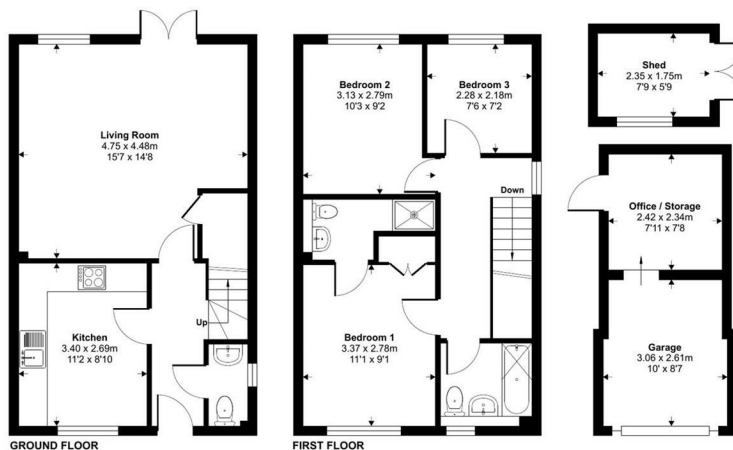
Approximate Area = 824 sq ft / 76.5 sq m

Garage = 150 sq ft / 13.9 sq m

Shed = 44 sq ft / 4 sq m

Total = 1018 sq ft / 94.4 sq m

For identification only - Not to scale



Floor plan produced in accordance with RICS Property Measurement 2nd Edition, incorporating International Property Measurement Standards (IPMS2 Residential). © nrichcom 2025. Produced for Miles Alexander Limited T/A Miles Estate Agents. REF: 1283852



Viewings strictly through the selling agents:

**Miles Estate Agents**

2 Piffin Lane, Bishops Lydeard, Taunton,  
Somerset, TA4 3AS

**Tel: 01823 470 500**

[lydeard@milesestateagents.co.uk](mailto:lydeard@milesestateagents.co.uk)

[www.milesestateagents.co.uk](http://www.milesestateagents.co.uk)



**rightmove**

**OnTheMarket.com**

# MILES ESTATE AGENTS

