



MILES ESTATE AGENTS

**35 Needhams Patch Cotford St. Luke
Taunton TA4 1JF £500,000**



Wow! An exceptional, extended detached 5 bedroom modern house set in the middle of it's own gardens with superbly presented and upgraded accommodation including refitted kitchen, conservatory and 3 bathrooms in this hugely popular village within Kingsmead catchment and striking distance of the fabulous Quantock Hills. Great degree of privacy, 3 reception rooms, double garage and off road parking - viewing is essential to fully appreciate. Freehold Council Tax Band F EPC : C.

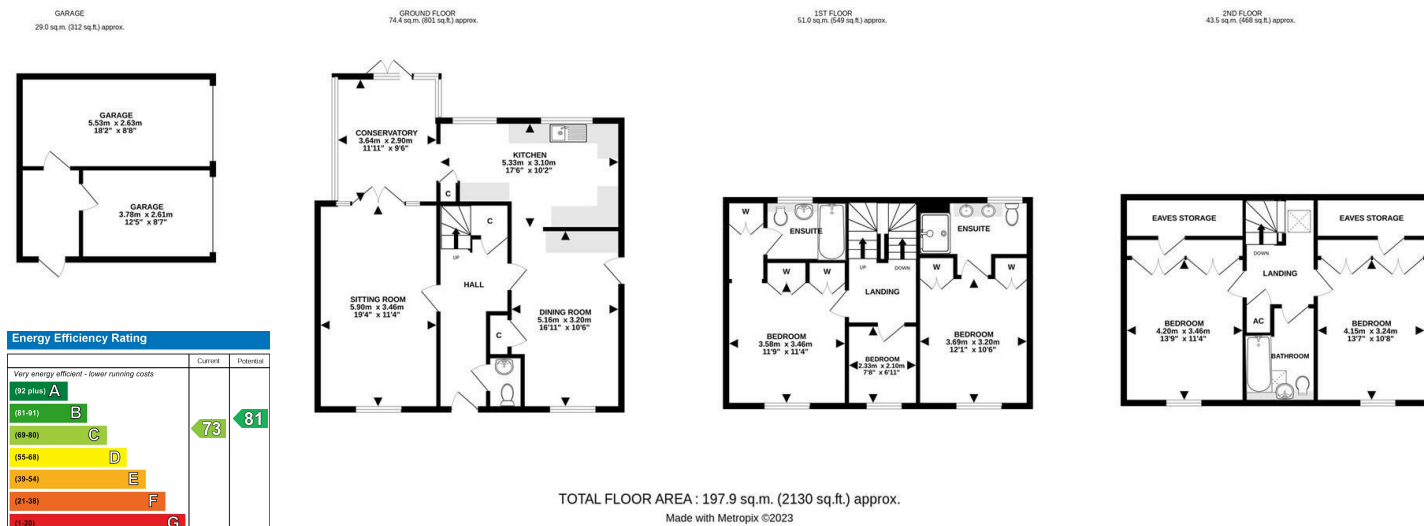




Features:

- Entrance Hall
- Spacious Sitting Room
- Separate Dining Room
- Refitted Kitchen
- Conservatory
- Cloakroom
- 4 Double Bedrooms
- 2 En Suites
- Further Single Bedroom
- Family Bathroom
- Lovely Gardens
- Double Garage & Off Road Parking
- Council Tax Band F
- Freehold
- EPC : C





Viewings strictly through the selling agents:

Miles Estate Agents

2 Piffin Lane, Bishops Lydeard, Taunton,
Somerset, TA4 3AS

Tel: 01823 470 500

lydeard@milesestateagents.co.uk

www.milesestateagents.co.uk

rightmove

OnTheMarket.com

MILES ESTATE AGENTS

