



MILES ESTATE AGENTS

**9 Minehead Road Bishops Lydeard
Taunton TA4 3BS £275,000**



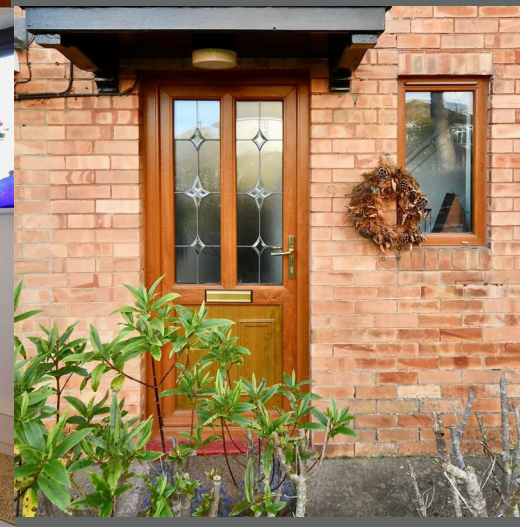
A well presented and modernised 2 double bedroom semi detached cottage with exceptionally large garden on the edge of this ever popular Quantock village. Good size sitting room and refitted kitchen/dining room, useful study / potential 3rd bedroom, refitted bathroom and off road parking. Early viewing highly recommended and NO ONWARD CHAIN. Freehold Council Tax Band C EPC : D.





Features:

- Entrance hall
- Spacious sitting room
- Refitted kitchen/dining room
- Useful study
- Cloakroom
- 2 good size double bedrooms
- Refitted bathroom
- Fantastic gardens with patio, lawns, trees, veg patch, greenhouse and shed
- Off road parking
- NO ONWARD CHAIN
- Freehold
- Council Tax Band C
- EPC:D

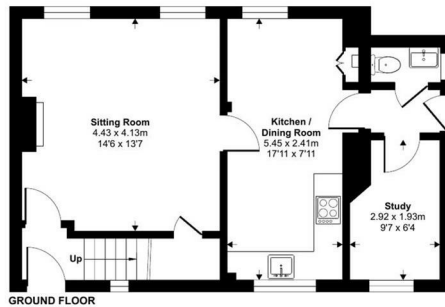


Minehead Road, Bishops Lydeard, Taunton, TA4

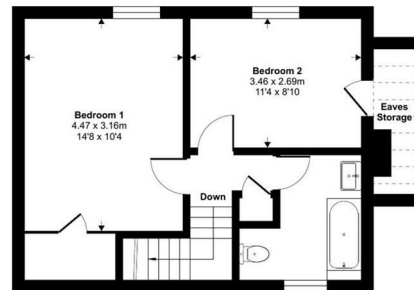


Approximate Area = 911 sq ft / 84.6 sq m
 Limited Use Area (s) = 37 sq ft / 3.4 sq m
 Total = 948 sq ft / 88 sq m
 For identification only - Not to scale

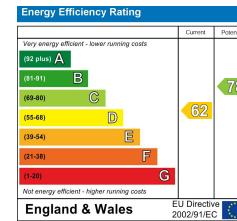
Denotes restricted
 head height



GROUND FLOOR



FIRST FLOOR



Floor plan produced in accordance with RICS Property Measurement 2nd Edition, incorporating International Property Measurement Standards (IPMS Residential). Produced for Miles Alexander Limited T/A Miles Estate Agents. REF: 1204601



Viewings strictly through the selling agents:

Miles Estate Agents

2 Piffin Lane, Bishops Lydeard, Taunton,
 Somerset, TA4 3AS

Tel: 01823 470 500

lydeard@milesestateagents.co.uk

www.milesestateagents.co.uk



MILES ESTATE AGENTS

rightmove

OnTheMarket.com

BEST
 ESTATE AGENT GUIDE
 2019 : EXCEPTIONAL
 SALES